

THIS MAP WAS PREPARED FOR ASSESSMENT PURPOSE ONLY.

NE1/4 NW1/4 SEC.34 T30S. R.5W. W.M. DOUGLAS COUNTY

1" = 100'

REVISED ON 7-1-19

30 5 34BA CANYONVILLE

(TILLER-TRAIL STATE HWY NO.227)

1/16 COR



SEE MAP 30 5 27CD

SEE MAP 30 5 34BB

CANCELLED NO'S  
800A1 900M1 3000  
600 4801 4901  
5900 4902

SEE MAP 30 5 34AB

470,500

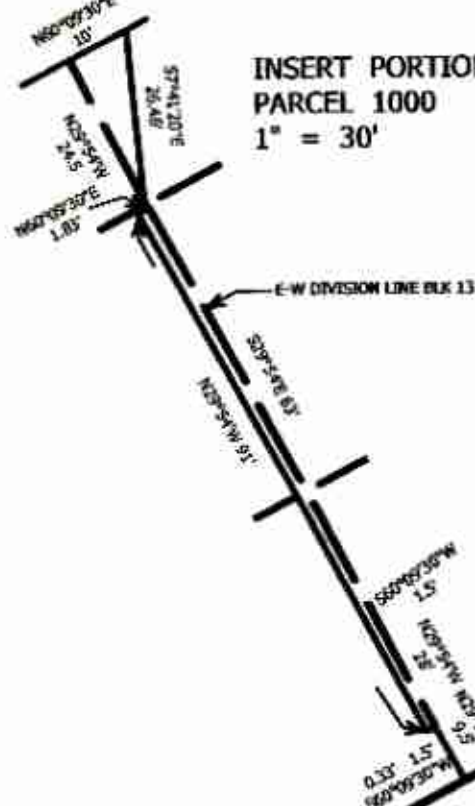
em  
3/10/15  
x

30 5 34BA CANYONVILLE

SEE MAP 30 5 34AC

8-01

INSERT PORTION  
PARCEL 1000  
1" = 30'



SEE MAP 30 5 34

U.S. INTERSTATE HWY. NO. 5

1/16 COR

