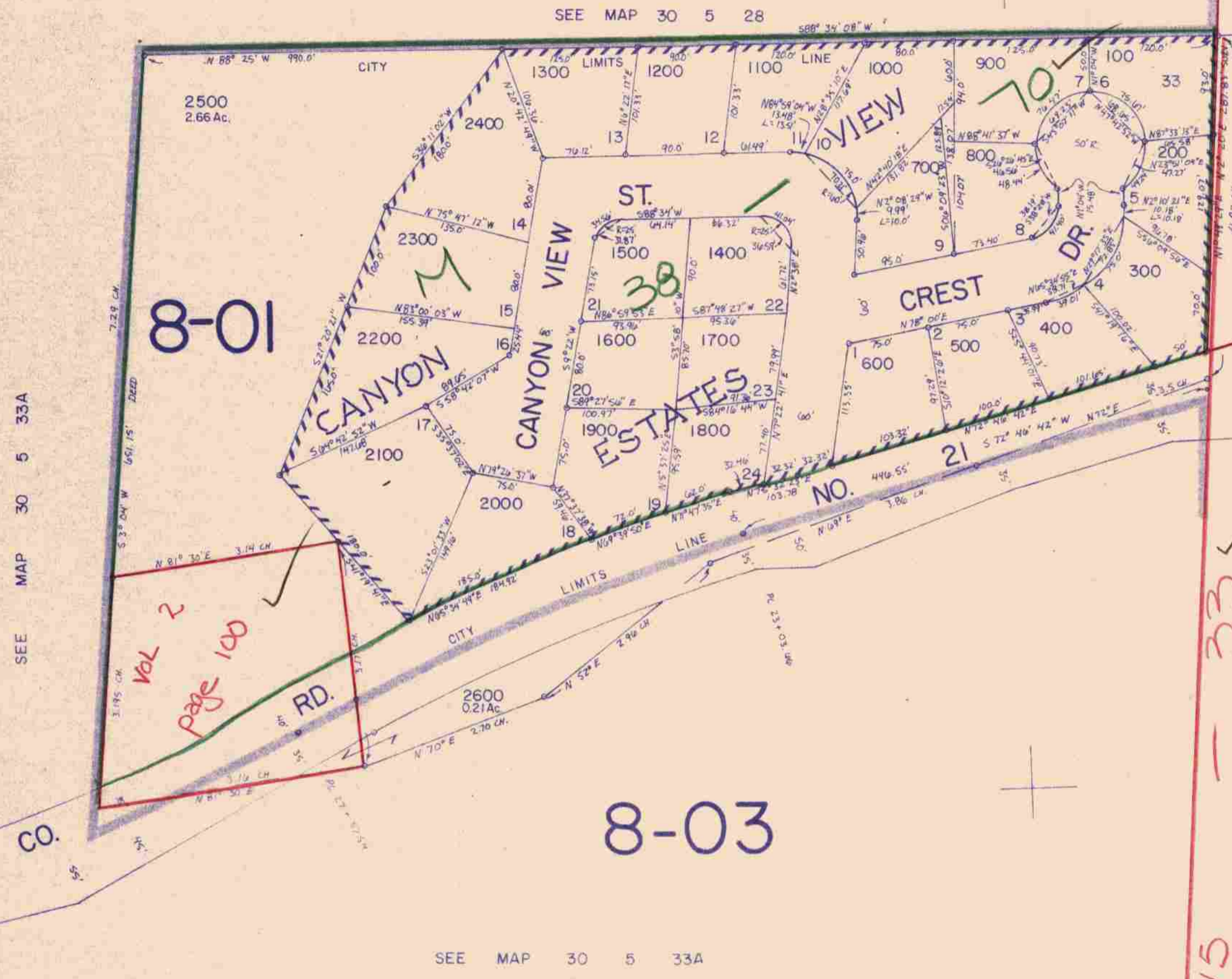
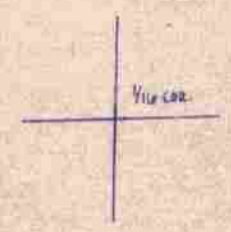
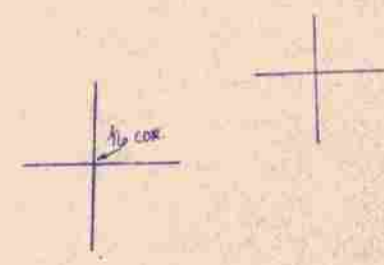


This map was prepared for assessment purpose only.

NE 1/4 NE 1/4 SEC. 33 T.30S. R. 5 W.W.M.  
DOUGLAS COUNTY

1" = 100'

30 5 33AA  
CANYONVILLE



SEE MAP 30 5 33A

SEE MAP 30 5 33A

Vol. 2 Pg 93  
4-19-31

SEE MAP 30 5 34BB

Cancelled  
2600

M 15-33 ✓

471,000

1,254,000

12/17/02  
[Signature]

30 5 33AA  
CANYONVILLE

DWT 10-5-81