

This map was prepared for assessment purpose only.

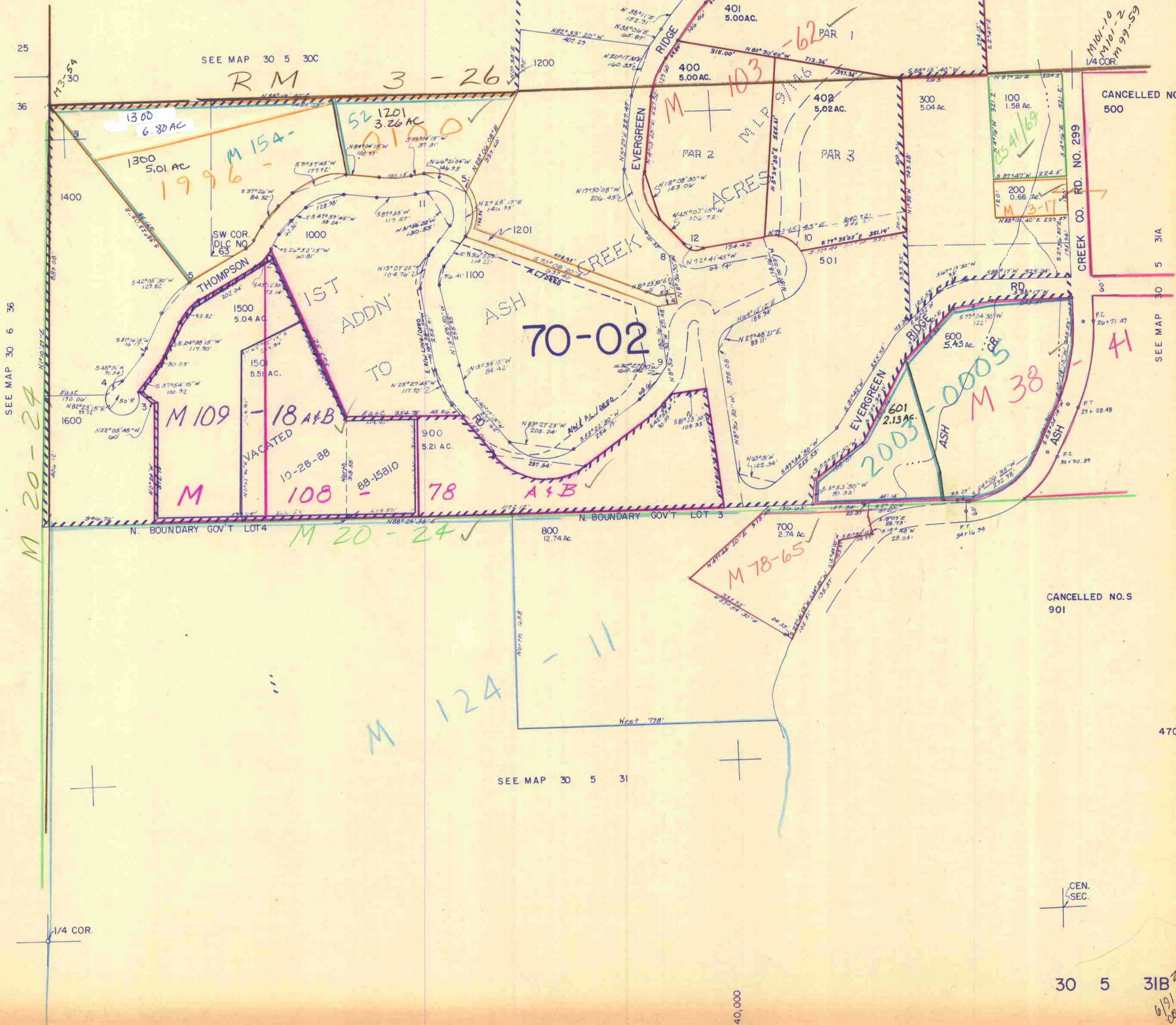
NW1/4 SEC. 31 T. 30S. R. 5 W. W.M.
DOUGLAS COUNTY

SEE MAP 30 5 30CD

REVISED ON
6-11-91

30 5 31B

1" = 200'



CANCELLED NO'S
500

SEE MAP 30 5 31A

41

CANCELLED NO.S
901

470.000

SEE MAP 30 5 31

CEN.
SEC.

30 5 31B

6/9/91
com