

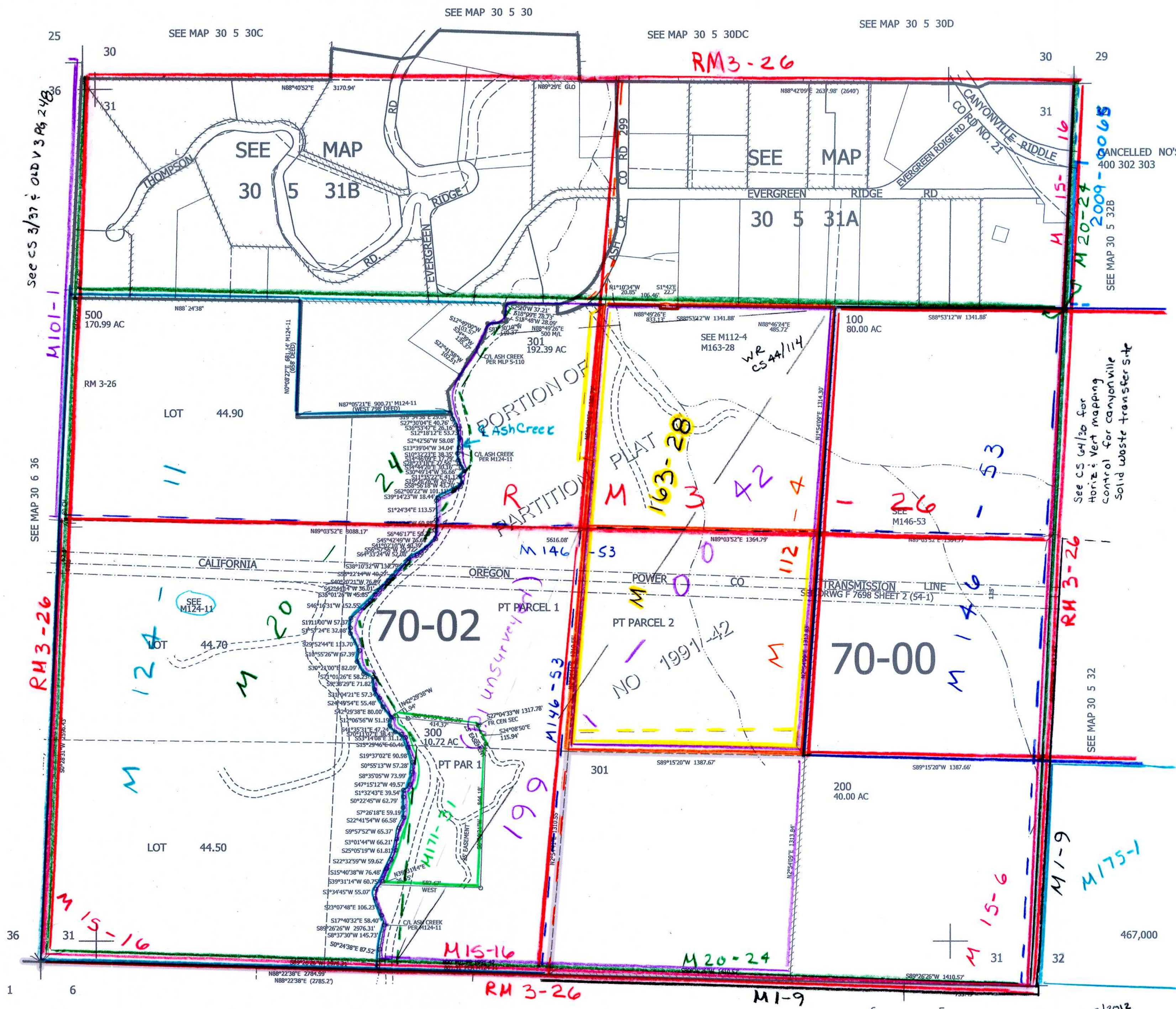
THIS MAP WAS PREPARED FOR ASSESSMENT PURPOSE ONLY.

SEC.31 T30S. R.5W. W.M. DOUGLAS COUNTY

REVISED ON 8-30-17

30 5 31 & INDEX

1" = 400'



See CS 3/37 & OLD V 3 Pg 248

M101-1

SEE MAP 30 6 36

RM 3-26

M 15-16

1 6

SEE MAP 30 5 30

SEE MAP 30 5 30DC

SEE MAP 30 5 30D

RM 3-26

SEE MAP 30 5 30C

SEE MAP 30 5 31B

SEE MAP

30 5 31A

CANCELLED NO'S 400 302 303

SEE MAP 30 5 32B

See CS 6/1/20 for Horiz & Vert mapping control for canyonville Solid waste transfer site

RM 3-26

SEE MAP 30 5 32

SEE MAP 31 5 00

4,164,000

JC 2/2012 VHW

30 5 31 & INDEX