

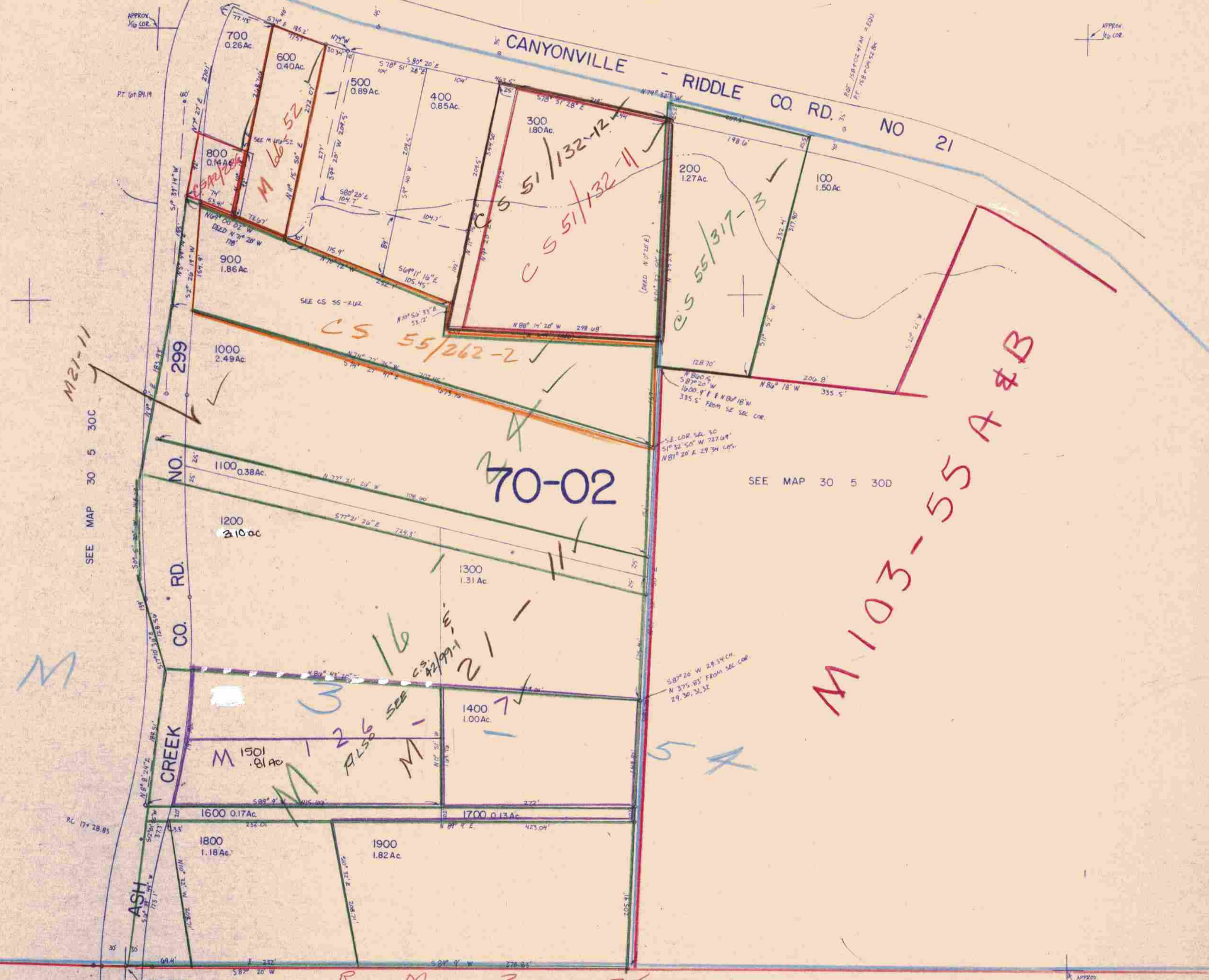
This map was prepared for  
assessment purpose only

SW1/4 SE 1/4 SEC. 30 T.30S. R. 5 W.W.M.  
DOUGLAS COUNTY  
1"=100'

30 5 30DC

SEE MAP 30 5 30D

CANYONVILLE - RIDDLE CO. RD. NO 21



SEE MAP 30 5 30D

SEE MAP 30 5 30C

SEE MAP 30 5 31B

472,000

30 5 30DC

M 101-2  
M 101-10  
M 99-59

1,242,000

10/02