

This map was prepared for assessment purpose only.

SE 1/4 SEC. 30 T. 30S. R. 5 W. W.M.

DOUGLAS COUNTY

1" = 200'

REVISED ON  
2-16-95

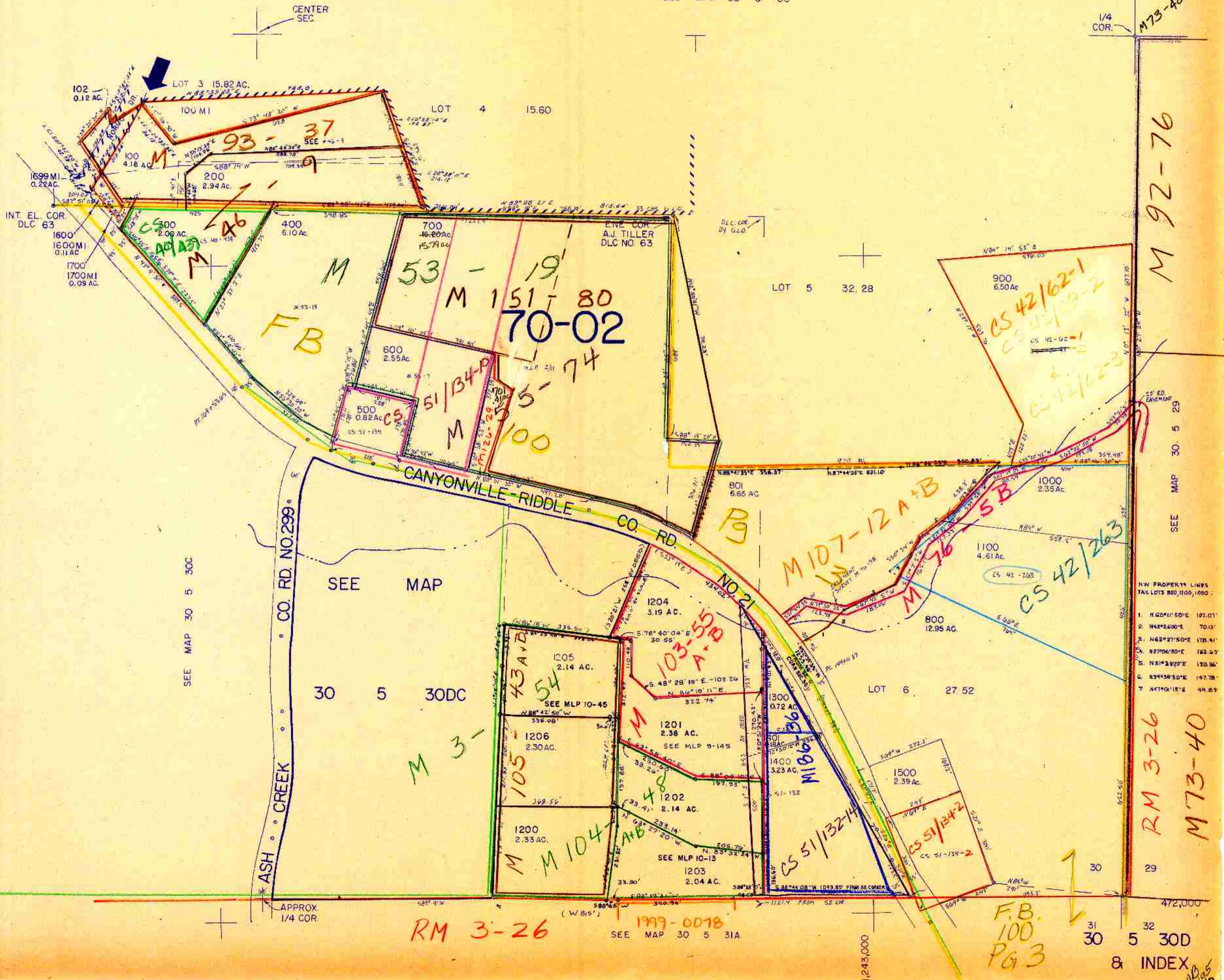
30 5 30D

& INDEX

Cancel Parcel  
101  
103  
201

SEE MAP 30 5 30

1/4 COR. M73-40



M 92-76

SEE MAP 30 5 29

RM 3-26

M 73-40

NW PROPERTY LINES  
TAX LOTS 800, 1100, 1200

1.	N 62° 11' 50" E	107.01'
2.	N 62° 24' 00" E	70.33'
3.	N 62° 27' 50" E	178.41'
4.	N 70° 06' 30" E	162.63'
5.	N 51° 23' 20" E	130.36'
6.	N 39° 54' 50" E	147.78'
7.	N 47° 01' 15" E	44.83'

RM 3-26

1999-0078  
SEE MAP 30 5 31A

F.B.  
100  
Pg 3

30 5 30D  
& INDEX