

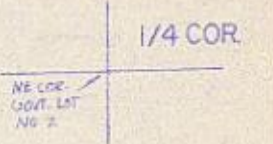
This map was prepared for assessment purposes only

NW1/4 SEC. 30 T.30S. R. 5 W. W.M.

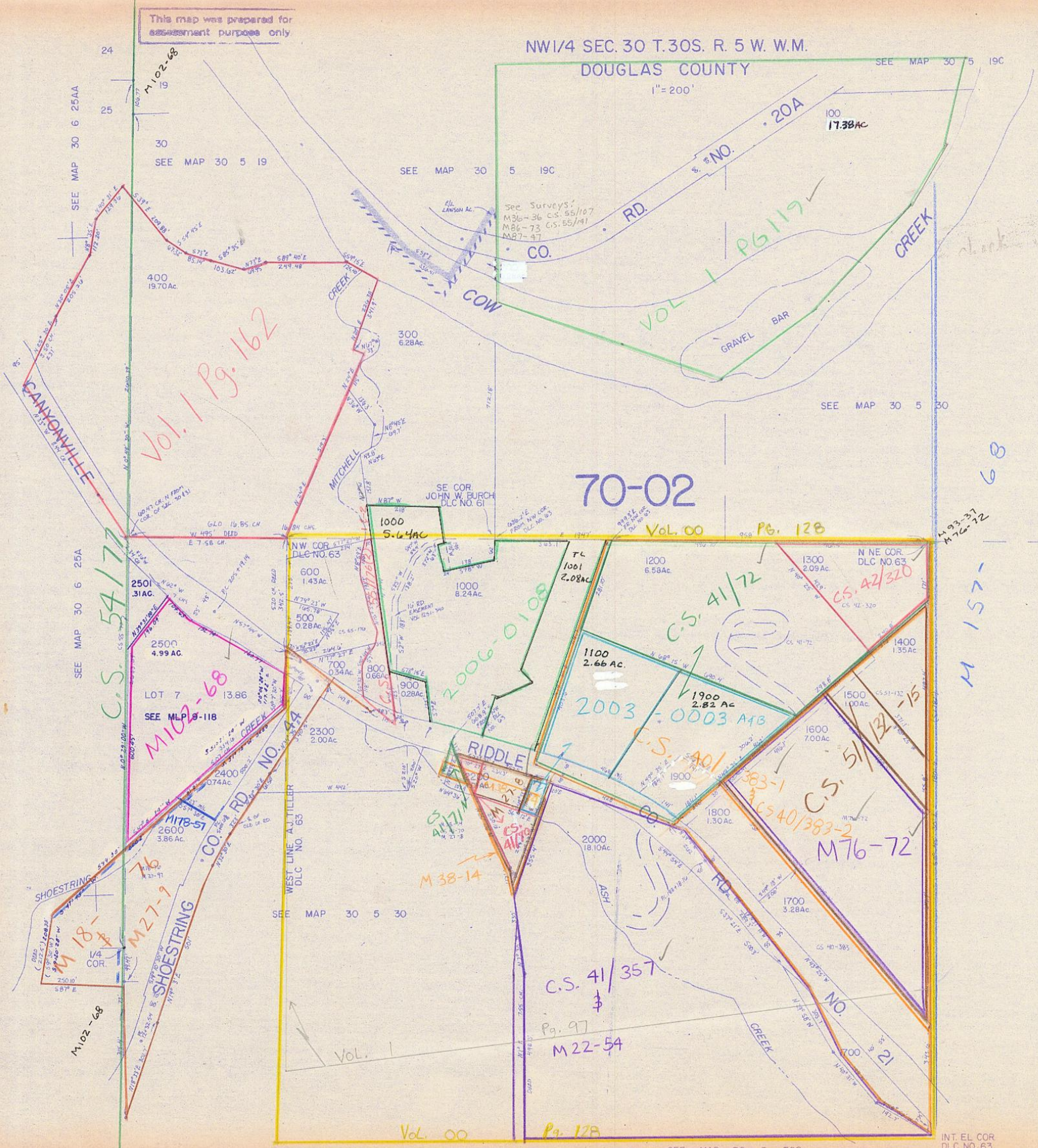
30 5 30B

DOUGLAS COUNTY

1" = 200'



CANCELLED NO'S
2100 1101
200



70-02

Vol. 1 Pg. 162

C.S. 54/177

M102-68

2006-0108

Vol. 00 Pg. 128

2003-0003 A1B

C.S. 41/72

C.S. 42/320

C.S. 51/132-15

M76-72

C.S. 41/357

Pg. 97

M22-54

Vol. 00

Pg. 128

M 157-68

SEE MAP 30 5 30

475,000

CENTER SEC.

30 5 30B

H.D. 9/88

1:241,000

INT. EL. COR. DLC NO. 63

SEE MAP 30 5 30C