

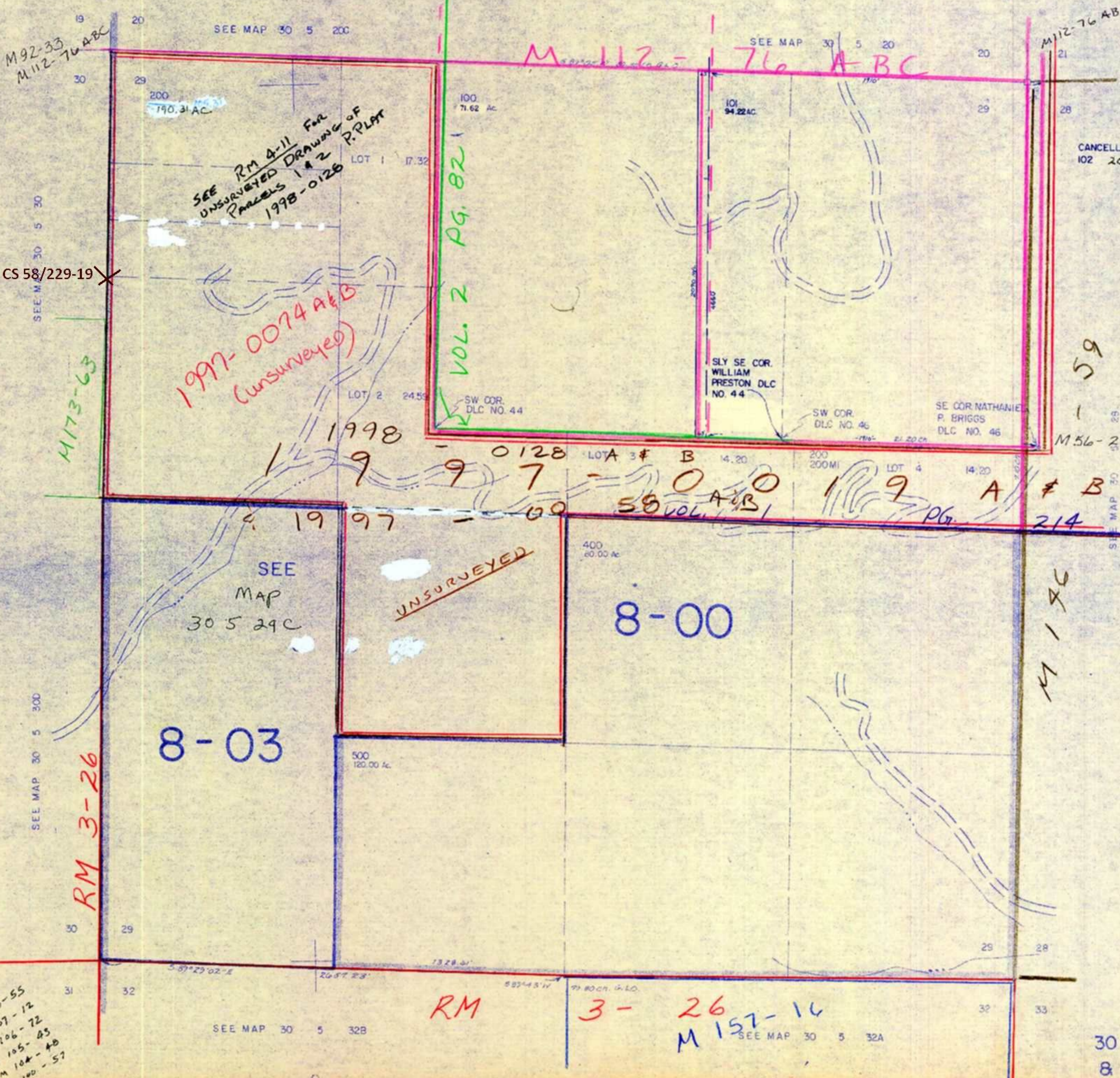
This map was prepared for assessment purpose only

SECTION 29 T.30 S. R. 5 W. W.M.
DOUGLAS COUNTY

REVISED ON
9-24-92

30 5 29
& INDEX

1" = 400'



SEE RM 4-11 FOR
UNSURVEYED DRAWING OF
PARCELS 1 & 2
1998-0128 P. PLAT

1997-0074 A & B
(unsurveyed)

VOL. 2 PG. 82

1998-0128
VOL. 1 PG. 1

8-00

8-03

RM

3-26

M 157-14

CANCELLED NO'S
102 200 mi

59

M 112-76

- M 103-55
- M 107-12
- M 106-72
- M 105-85
- M 104-48
- M 100-57

30 5 29
& INDEX

10/92