

THIS MAP WAS PREPARED FOR ASSESSMENT PURPOSE ONLY.

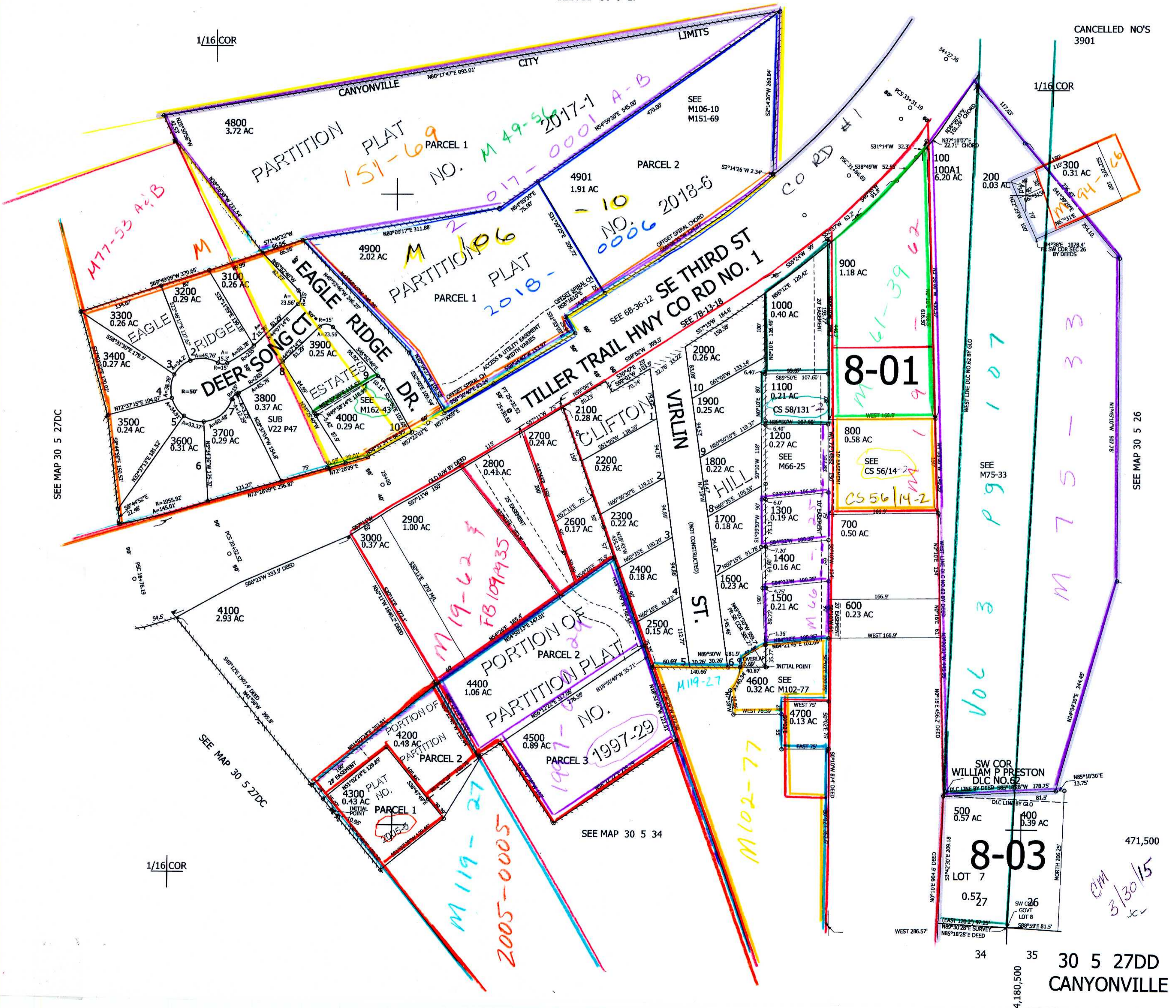
SE1/4 SE1/4 SEC.27 T30S. R.5W. W.M.
DOUGLAS COUNTY
1" = 100'

REVISED ON
2-27-18

30 5 27DD
CANYONVILLE

SEE MAP 30 5 27

CANCELLED NO'S
3901



SEE MAP 30 5 27DC

SEE MAP 30 5 27DC

SEE MAP 30 5 34

SEE MAP 30 5 26

Vol 3 PG 107

M 75-33

M 19-62
FB 109435
M 102-77
M 106
M 119-27
2005-0005

8-01

8-03

471,500
CM
3/30/15
JCL

30 5 27DD
CANYONVILLE