

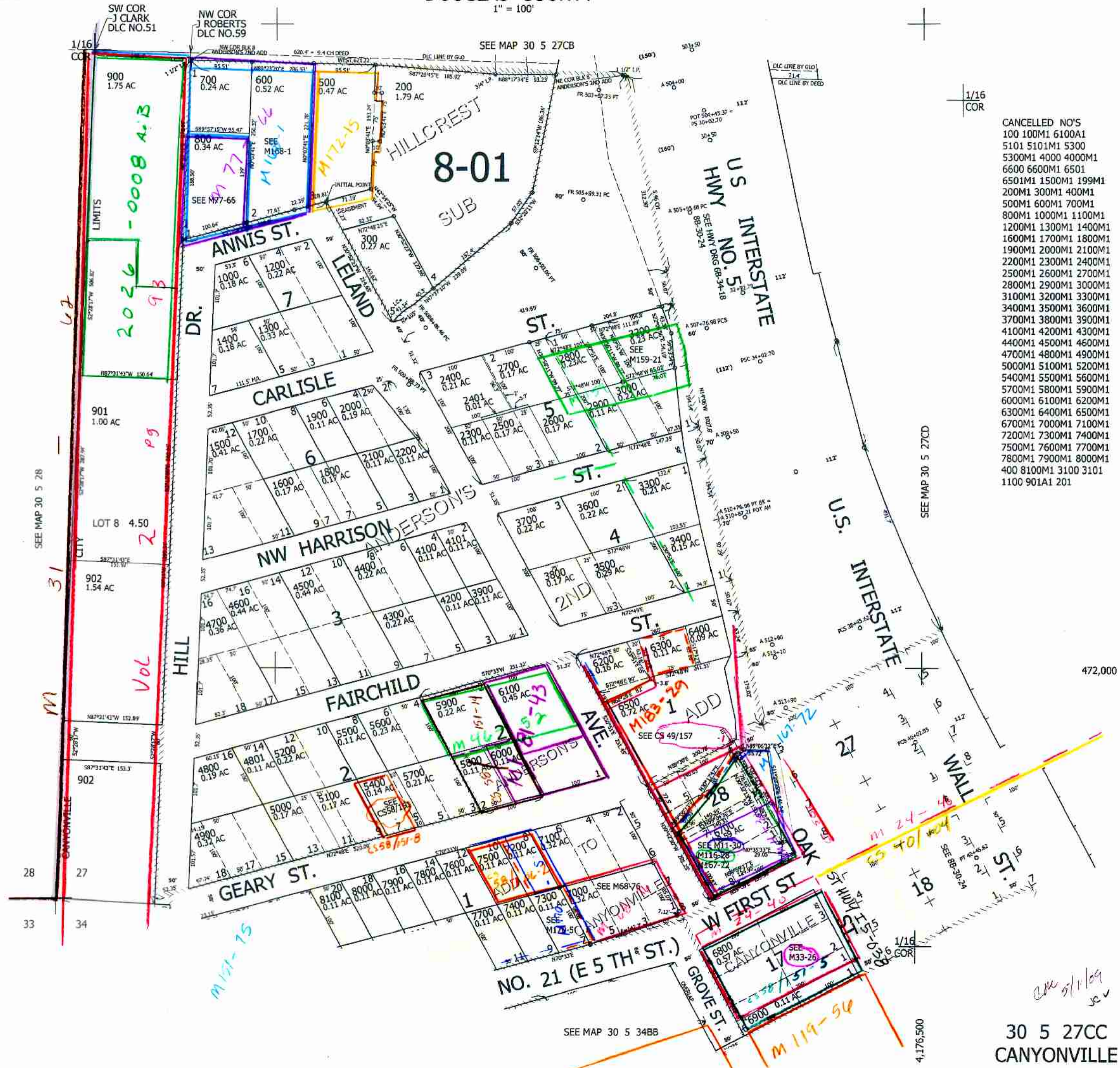
THIS MAP WAS PREPARED FOR ASSESSMENT PURPOSE ONLY.

SW1/4 SW1/4 SEC.27 T30S. R.5W. W.M. DOUGLAS COUNTY

1" = 100'

REVISED ON 6-29-16

30 5 27CC CANYONVILLE



- CANCELLED NO'S
- 100 100M1 6100A1
 - 5101 5101M1 5300
 - 5300M1 4000 4000M1
 - 6600 6600M1 6501
 - 6501M1 1500M1 199M1
 - 200M1 300M1 400M1
 - 500M1 600M1 700M1
 - 800M1 1000M1 1100M1
 - 1200M1 1300M1 1400M1
 - 1600M1 1700M1 1800M1
 - 1900M1 2000M1 2100M1
 - 2200M1 2300M1 2400M1
 - 2500M1 2600M1 2700M1
 - 2800M1 2900M1 3000M1
 - 3100M1 3200M1 3300M1
 - 3400M1 3500M1 3600M1
 - 3700M1 3800M1 3900M1
 - 4100M1 4200M1 4300M1
 - 4400M1 4500M1 4600M1
 - 4700M1 4800M1 4900M1
 - 5000M1 5100M1 5200M1
 - 5400M1 5500M1 5600M1
 - 5700M1 5800M1 5900M1
 - 6000M1 6100M1 6200M1
 - 6300M1 6400M1 6500M1
 - 6700M1 7000M1 7100M1
 - 7200M1 7300M1 7400M1
 - 7500M1 7600M1 7700M1
 - 7800M1 7900M1 8000M1
 - 400 8100M1 3100 3101
 - 1100 901A1 201

30 5 27CC CANYONVILLE

Handwritten signature and date: *one 5/1/09*