

THIS MAP WAS PREPARED FOR ASSESSMENT PURPOSE ONLY.

NW1/4 SW1/4 SEC.27 T30S. R.5W. W.M. DOUGLAS COUNTY

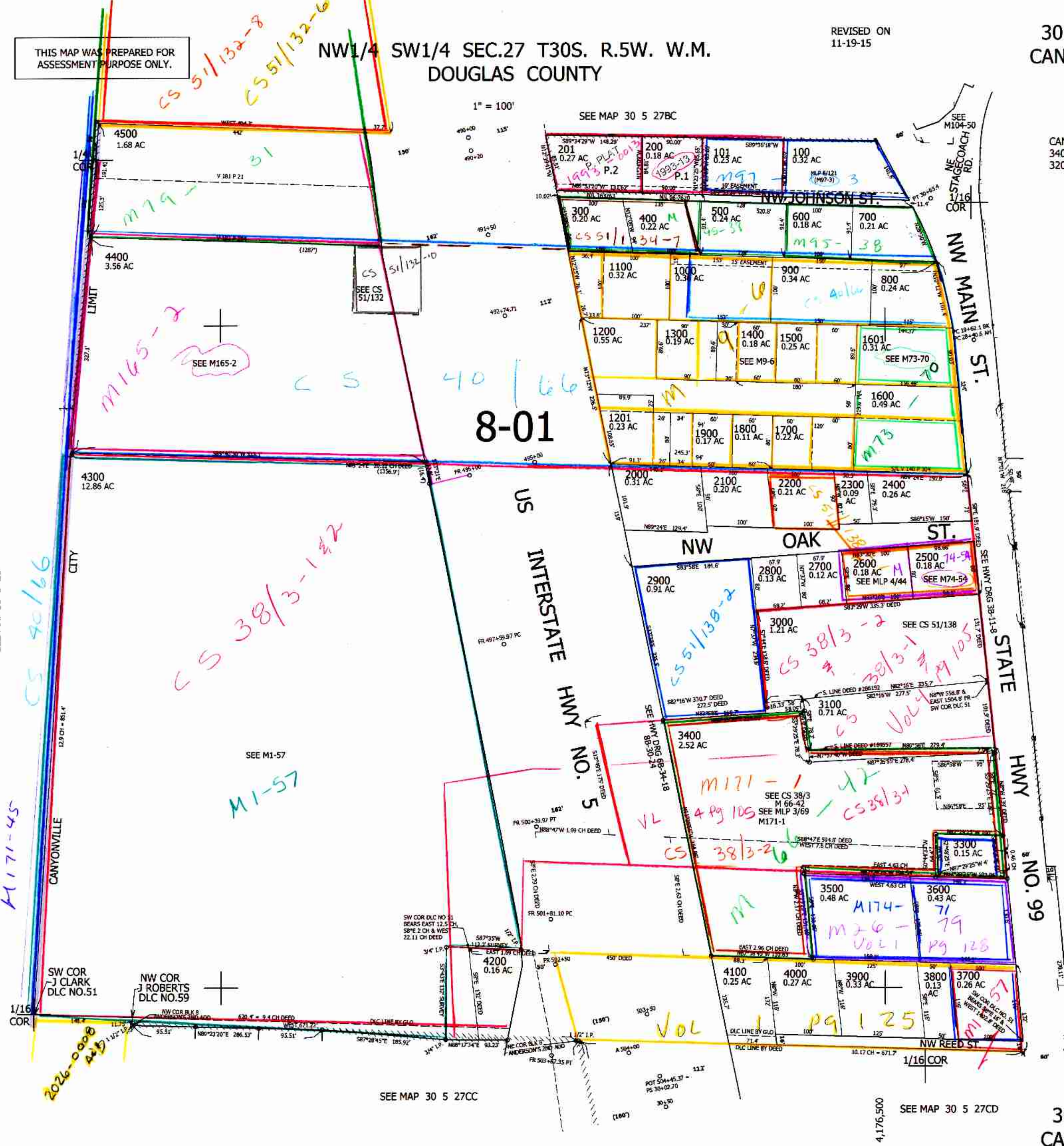
REVISED ON 11-19-15

30 5 27CB CANYONVILLE

1" = 100'

SEE MAP 30 5 27BC

CANCELLED NO'S 3401 3402 3403 3200



SEE MAP 30 5 28

SEE MAP 30 5 27CA

SEE MAP 30 5 27CC

SEE MAP 30 5 27CD

30 5 27CB CANYONVILLE

473,000

3/6/17