

THIS MAP WAS PREPARED FOR ASSESSMENT PURPOSE ONLY.

NE1/4 SW1/4 SEC.27 T30S. R.5W. W.M. DOUGLAS COUNTY

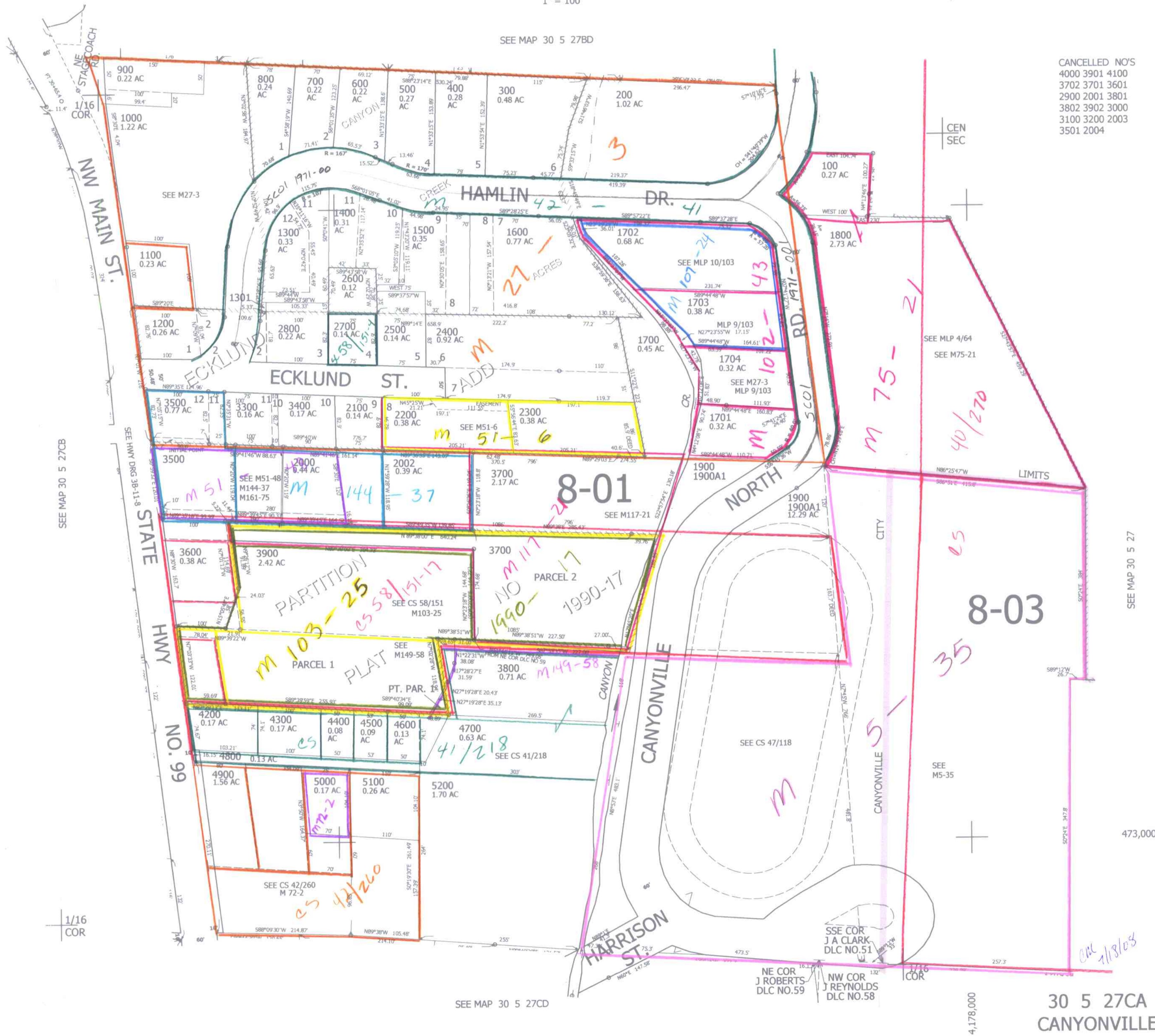
REVISED ON 2-7-12

30 5 27CA CANYONVILLE

1" = 100'

SEE MAP 30 5 27BD

CANCELLED NO'S
4000 3901 4100
3702 3701 3601
2900 2001 3801
3802 3902 3000
3100 3200 2003
3501 2004



SEE MAP 30 5 27CB

SEE MAP 30 5 27

SEE MAP 30 5 27CD

4,178,000

30 5 27CA CANYONVILLE

ONE 1/18/05