

SW1/4 NW1/4 SEC. 27 T.30S. R.5W. W.M.  
DOUGLAS COUNTY

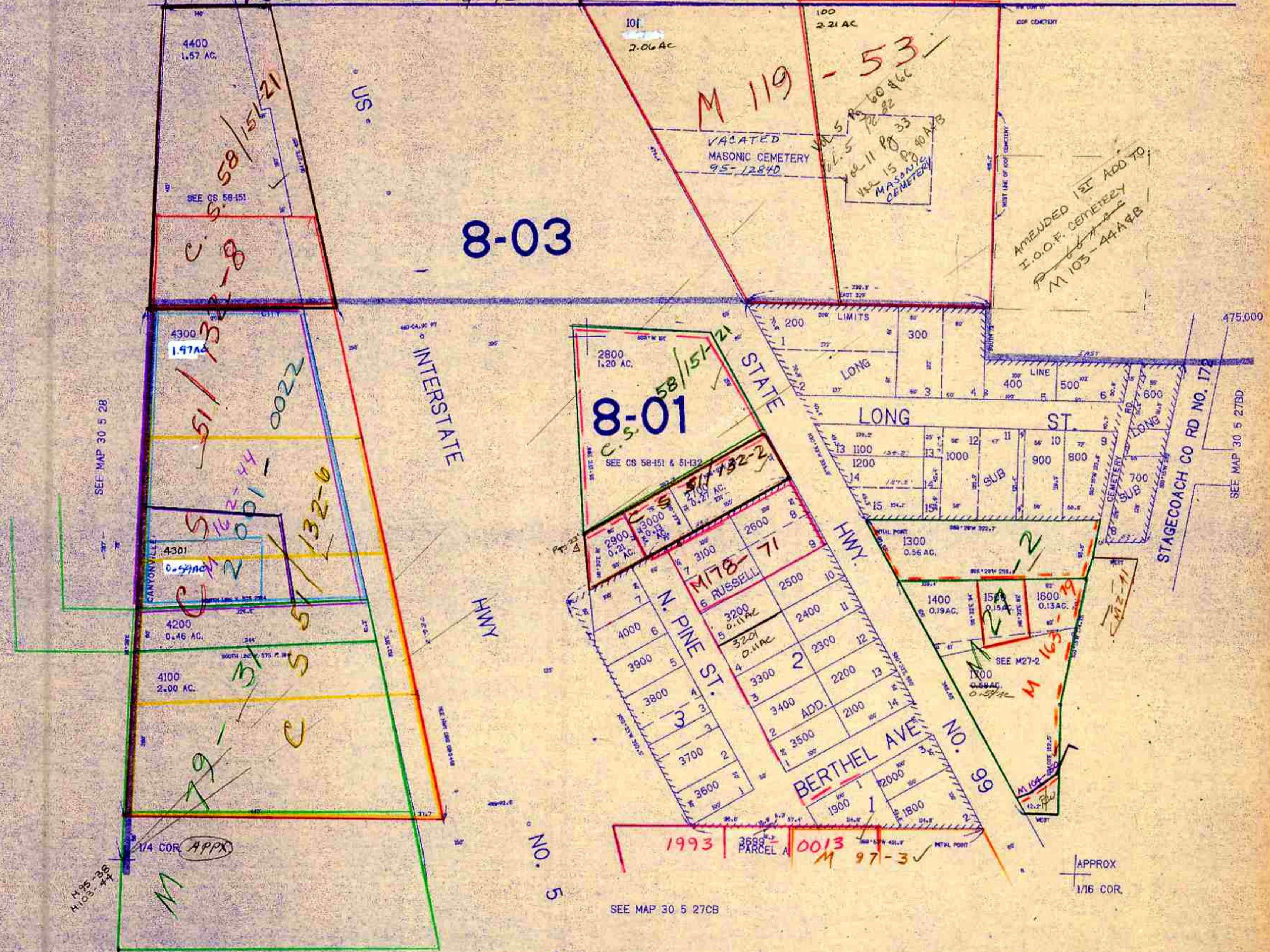
30 5 27BC  
APPROX CANYONVILLE  
1/16 COR.

THIS MAP WAS PREPARED FOR  
ASSESSMENT PURPOSE ONLY.

APPROX  
1/16 COR.

Vol 2 Pg. 12

SEE MAP 30 5 27B



8-03

8-01

SEE MAP 30 5 28

SEE MAP 30 5 27BD

SEE MAP 30 5 27CB

APPROX  
1/16 COR.

30 5 27BC  
CANYONVILLE

255,000

10/22/21