

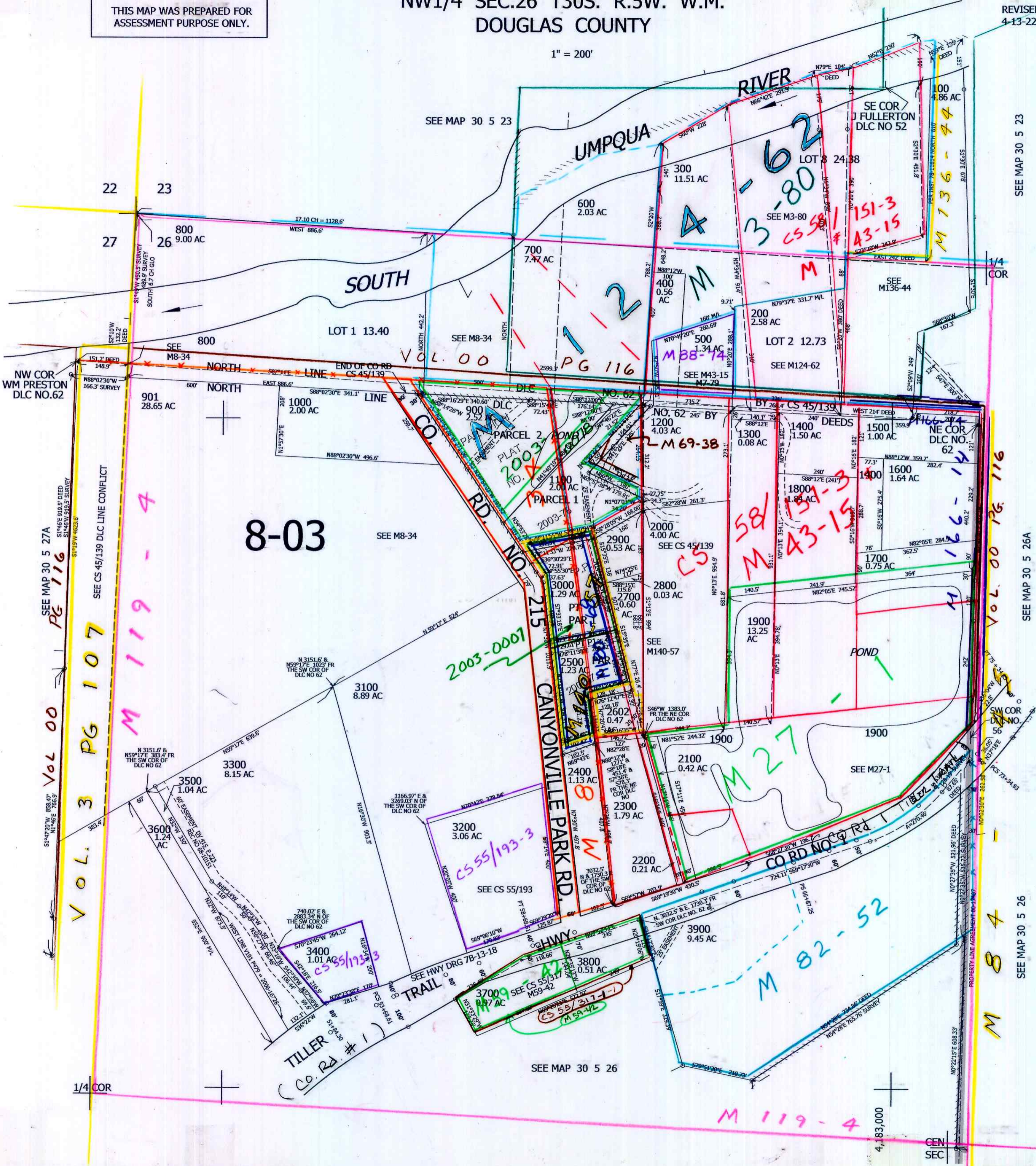
THIS MAP WAS PREPARED FOR ASSESSMENT PURPOSE ONLY.

### NW1/4 SEC.26 T30S. R.5W. W.M. DOUGLAS COUNTY

REVISED ON 4-13-22

1" = 200'

CANCELLED NO'S  
2601 3200A1 902  
2603 2501 2600  
1101 903 1102  
3001 3002



SEE MAP 30 5 23

SEE MAP 30 5 26A

SEE MAP 30 5 26

474,000