

NE 1/4 SEC. 26 T.30S. R. 5 W. W.M.  
DOUGLAS COUNTY

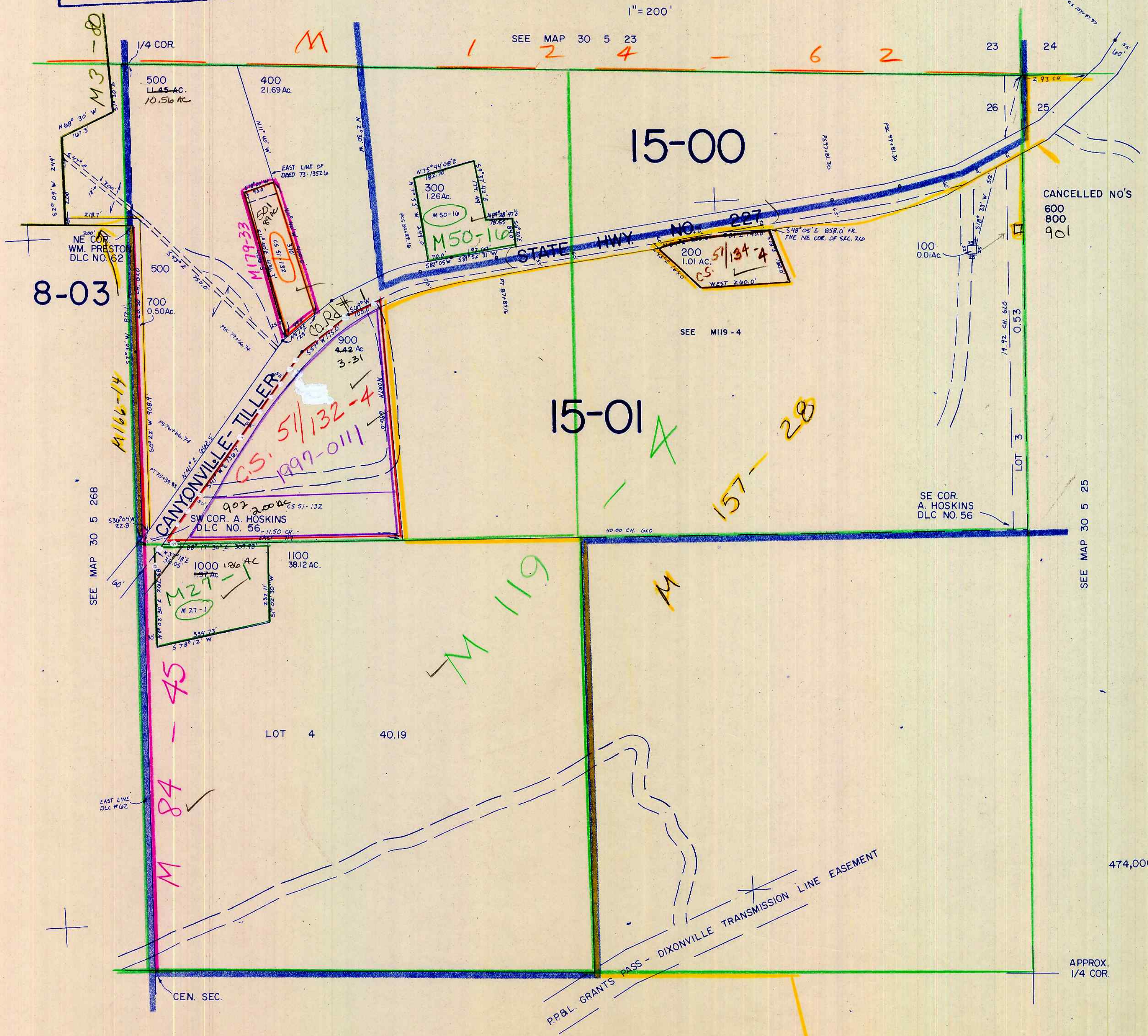
REVISED ON  
1-28-94

30 5 26A

This map was prepared for  
assessment purpose only

1" = 200'

SEE MAP 30 5 23



CANCELLED NO'S  
600  
800  
901

SEE M119-4

SEE MAP 30 5 25

PP&L GRANTS PASS - DIXONVILLE TRANSMISSION LINE EASEMENT

SEE MAP 30 5 26

1,264,000

APPROX.  
1/4 COR.

474,000

30 5 26A

JP 2/1/94