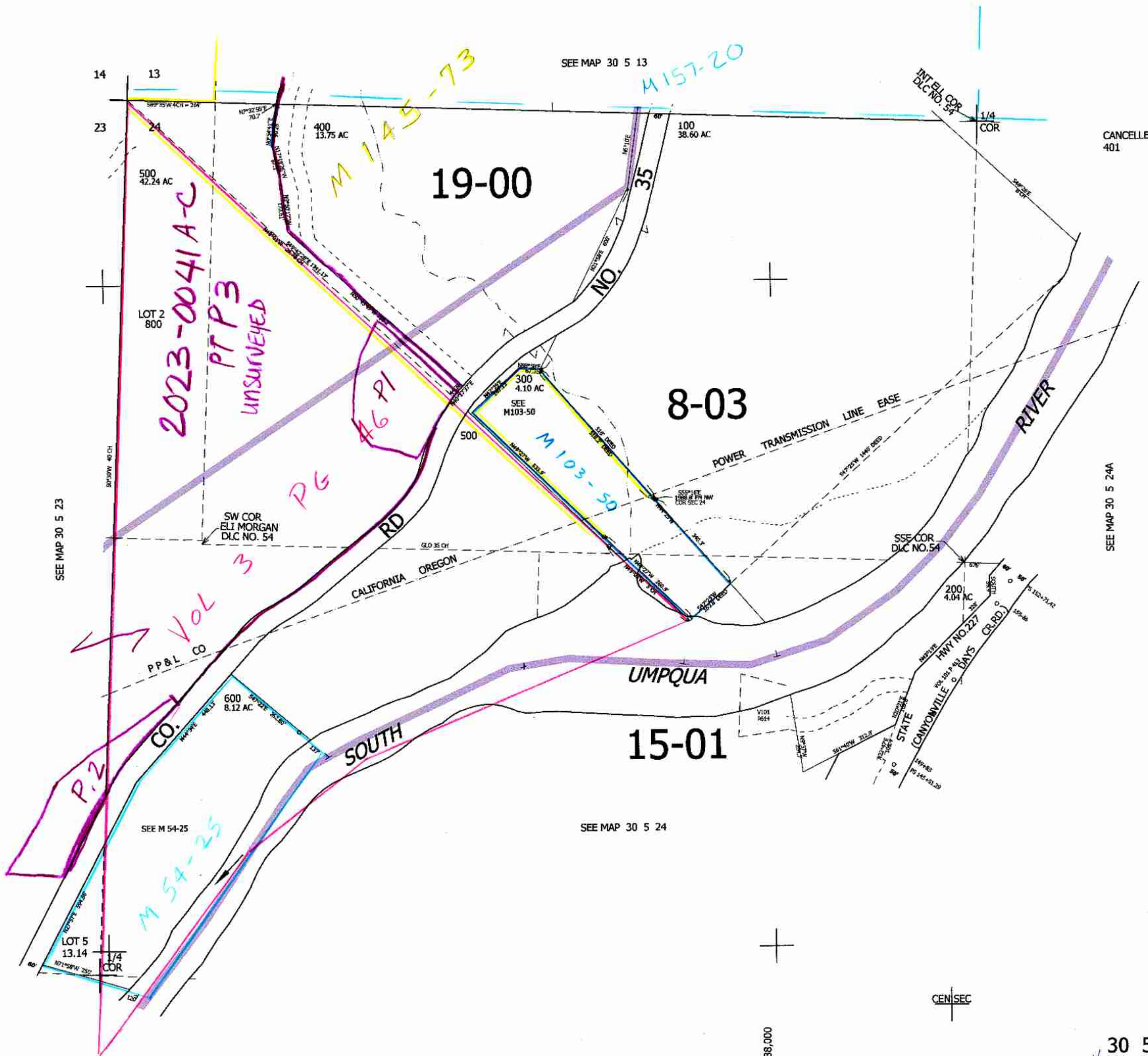


LINES PROTRACTED HEREON
ARE APPROXIMATE ONLY.

NW1/4 SEC.24 T30S. R.5W. W.M.
DOUGLAS COUNTY
1" = 200'

REVISED ON
12-12-05

30 5 24B



CANCELLED NO'S
401

SEE MAP 30 5 24A

479,000

4,188,000

30 5 24B
12/05 JP