

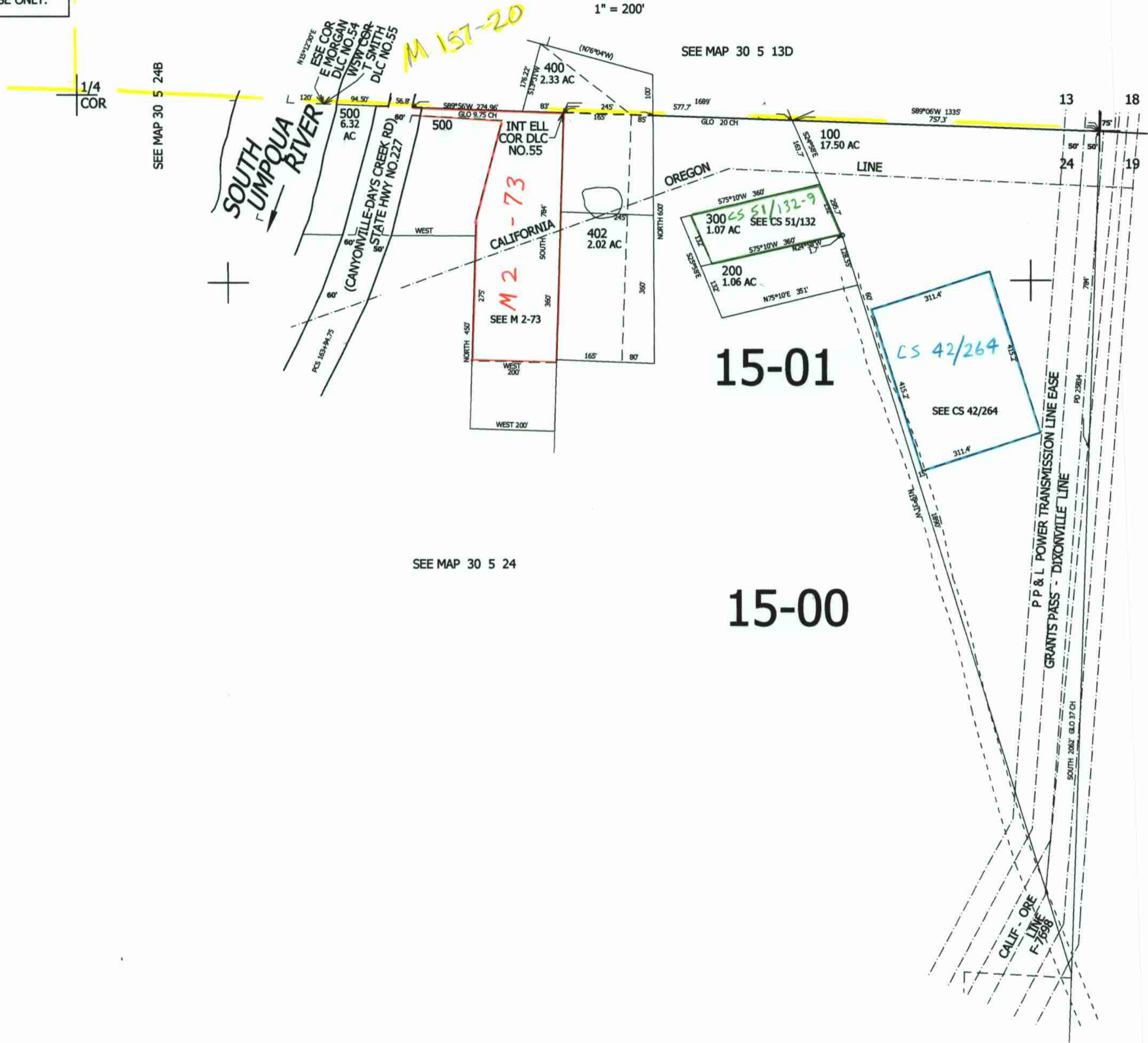
NE1/4 SEC.24 T30S. R.5W. W.M.
DOUGLAS COUNTY

REVISED ON
12-10-03

30 5 24A

THIS MAP WAS PREPARED FOR
ASSESSMENT PURPOSE ONLY.

1" = 200'



CANCELLED NO'S
401

SEE MAP 30 4 19

SEE MAP 30 5 24

15-01

15-00

479,000

CEN
SEC

1/4
COR

4,191,000

30 5 24A
nw 12/03 JP