

THIS MAP WAS PREPARED FOR ASSESSMENT PURPOSE ONLY.

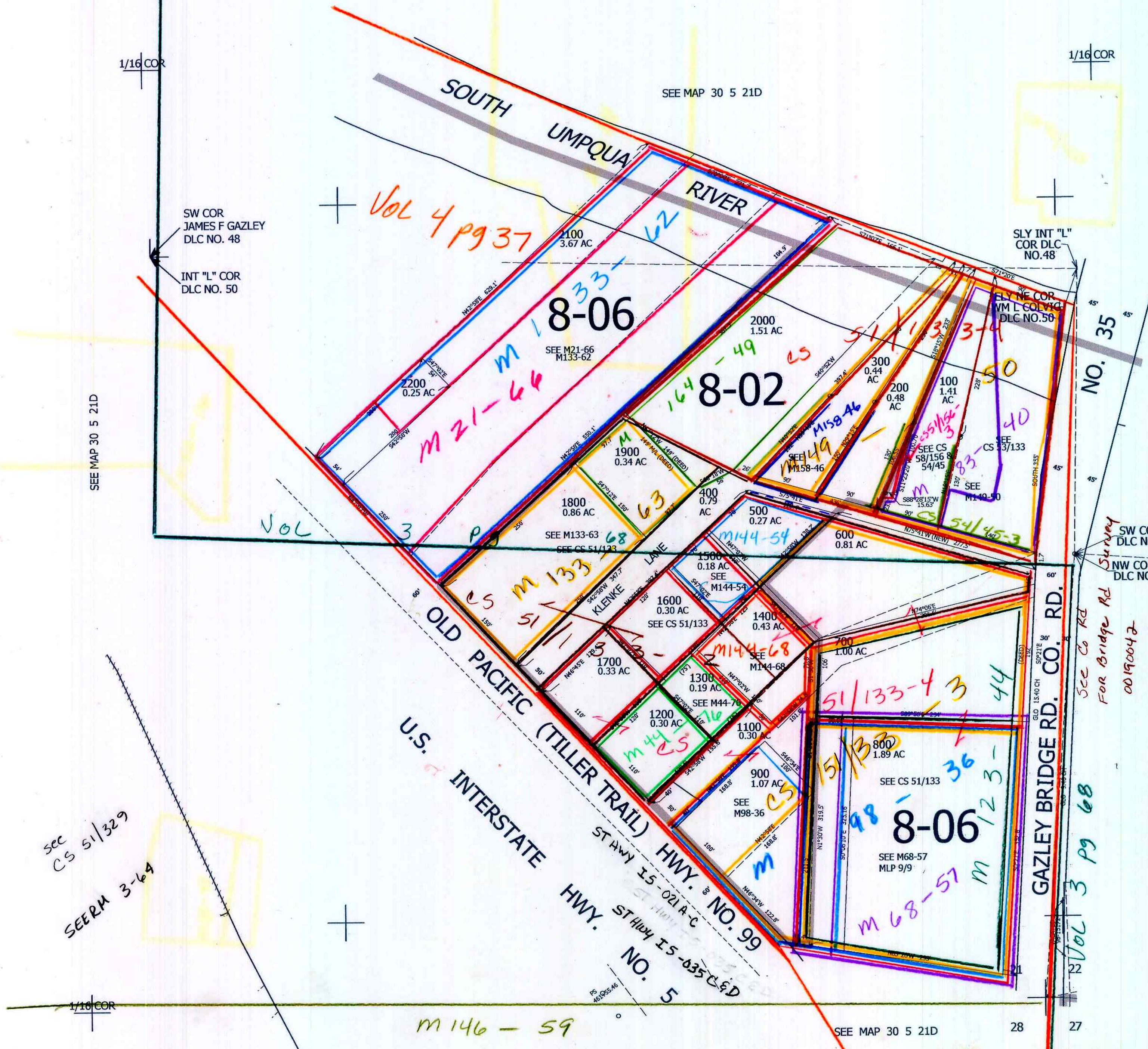
SE1/4 SE1/4 SEC.21 T30S. R.5W. W.M.
DOUGLAS COUNTY

1" = 100'

REVISED ON
11-13-09

30 5 21DD

CANCELLED NO'S
1000 801 199



SEE MAP 30 5 21D

SW COR
JAMES F GAZLEY
DLC NO. 48

INT "L" COR
DLC NO. 50

SLY INT "L"
COR DLC
NO. 48

NO. 35

SW COR
DLC NO. 48
NW COR
DLC NO. 51

See Co Rd
For Bridge Rd
Survey
00190042

SEE MAP 30 5 22

see
CS 51/329
SEERM 3-64

U.S. INTERSTATE HWY. NO. 99
ST HWY IS-021A-C
ST HWY IS-035C-E-D
NO. 5

GAZLEY BRIDGE RD. CO. RD.

Vol 3 pg 68

M 146 - 59

SEE MAP 30 5 21D

28

27

SEE MAP 30 5 28

477,000

cm
7/21/08
30 5 21DD