

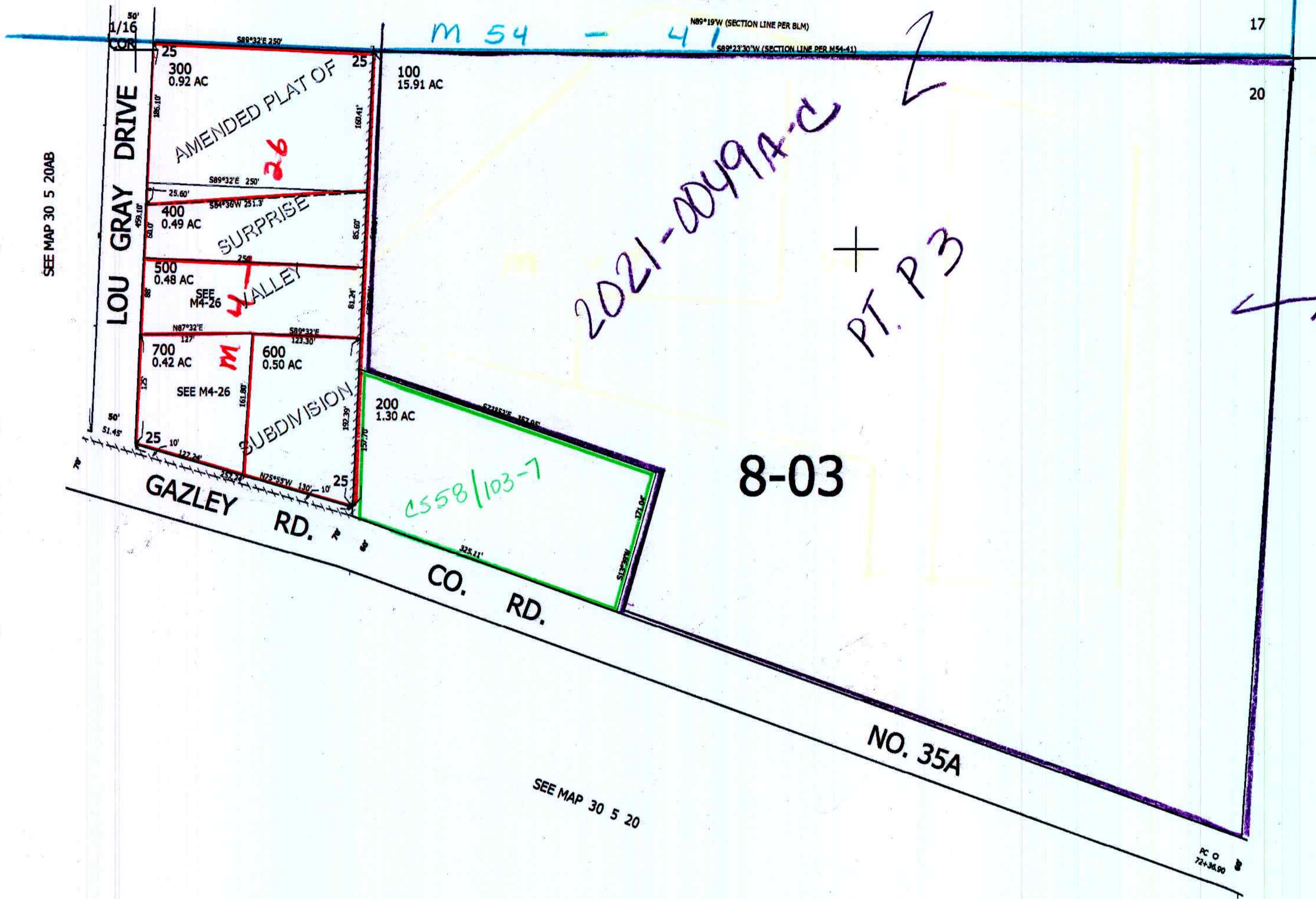
THIS MAP WAS PREPARED FOR ASSESSMENT PURPOSE ONLY.

NE1/4 NE1/4 SEC.20 T30S. R.5W. W.M. DOUGLAS COUNTY  
1" = 100'

REVISED ON 7-29-13

30 5 20AA

SEE MAP 30 5 17DD



1/16 COR

SOUTH LINE S B BRIGGS DLC NO. 45  
NE COR WM PRESTON DLC NO. 44

INT ELL COR DLC NO. 45

1/16 COR

481,000

4,170,000

CM 9/6/13

30 5 20AA