

THIS MAP WAS PREPARED FOR ASSESSMENT PURPOSE ONLY.

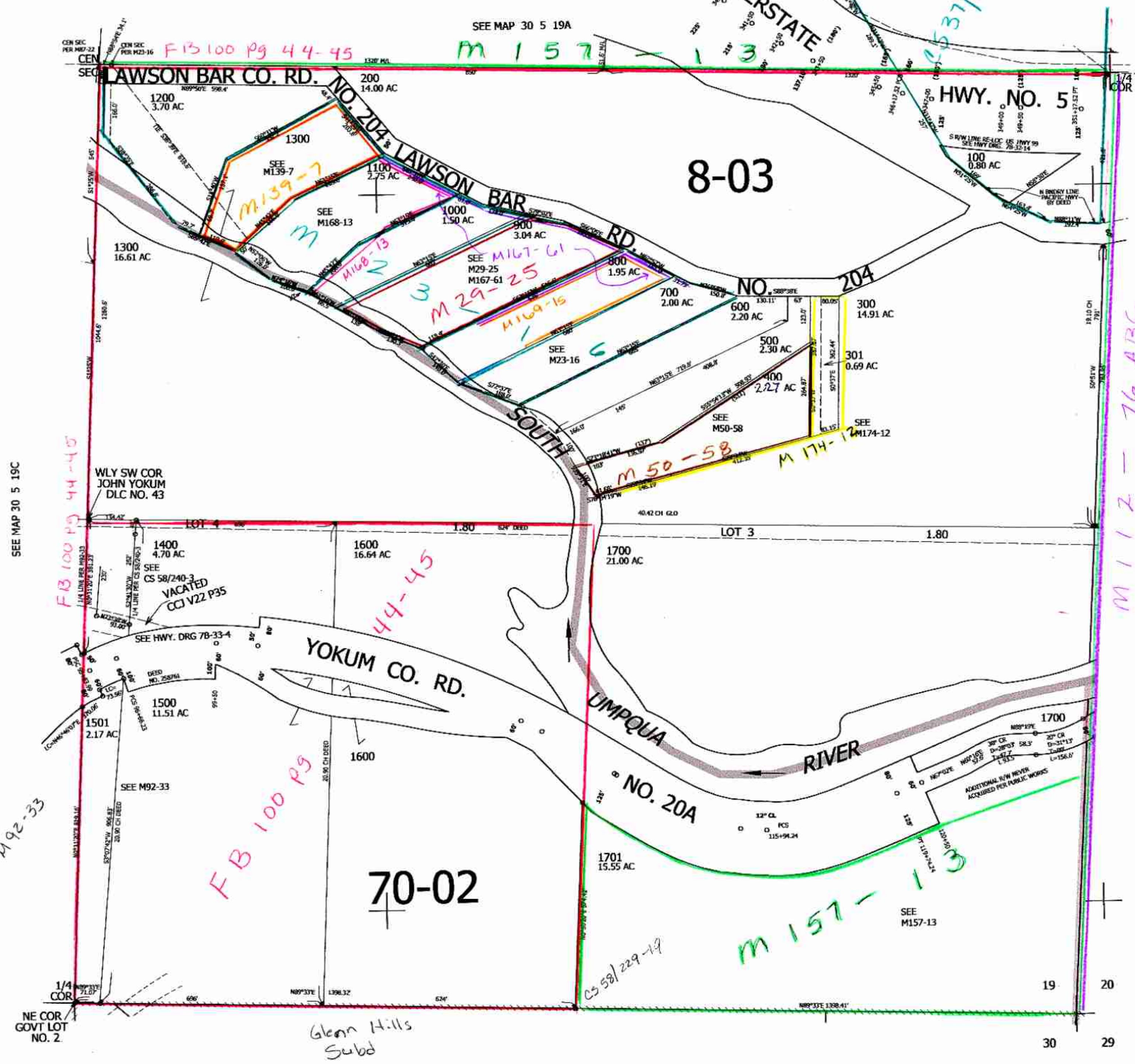
SE1/4 SEC.19 T30S. R.5W. W.M. DOUGLAS COUNTY

REVISED ON 8-4-20

30 5 19D

1" = 200'

CANCELLED NO'S



SEE MAP 30 5 19C

SEE MAP 30 5 20C

SEE MAP 30 5 30

30 5 19D

am 9/23/13

scv

4,165,000