

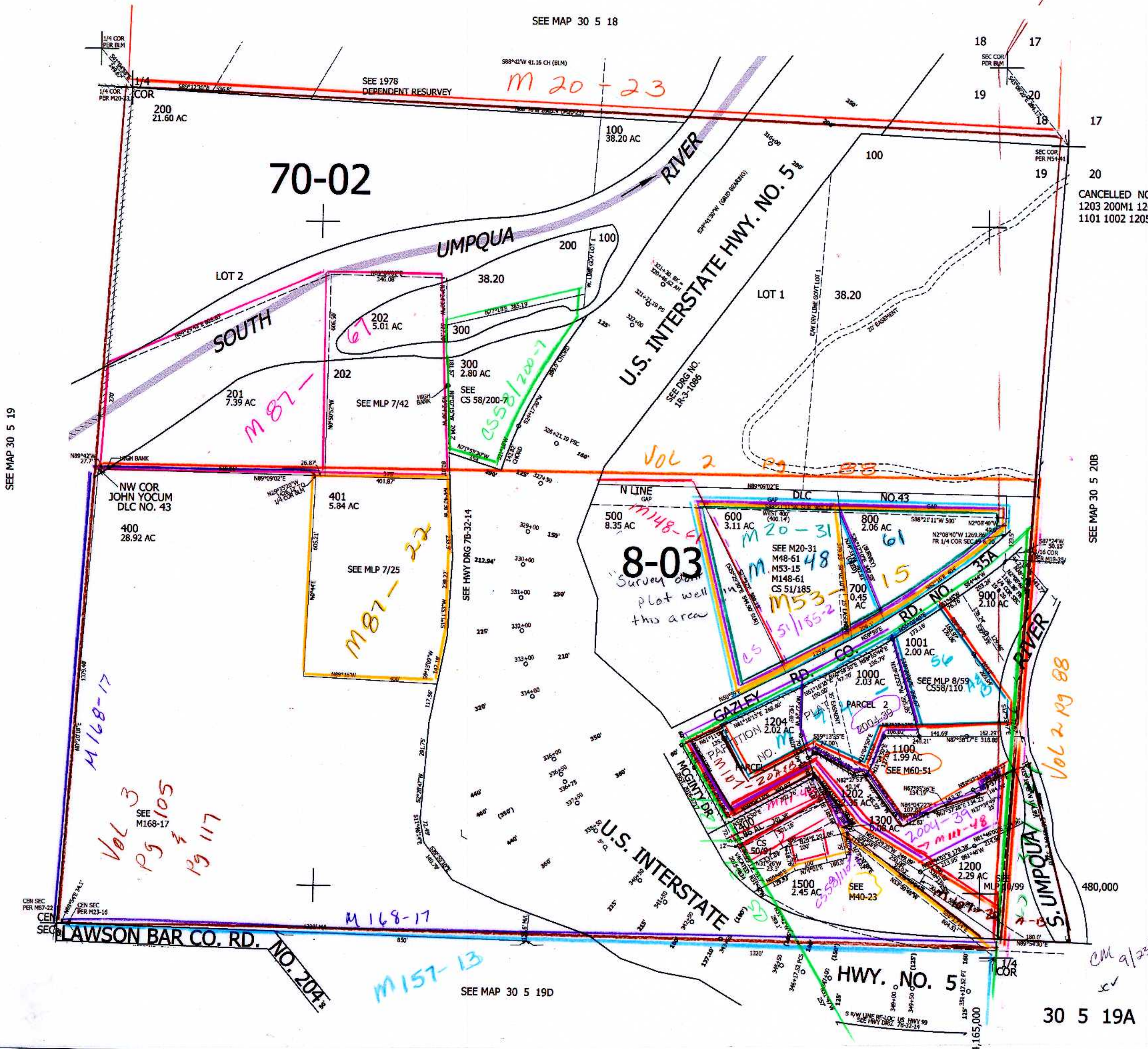
THIS MAP WAS PREPARED FOR ASSESSMENT PURPOSE ONLY.

NE1/4 SEC.19 T30S. R.5W. W.M. DOUGLAS COUNTY

REVISED ON 4-5-16

30 5 19A

1" = 200'



SEE MAP 30 5 19

SEE MAP 30 5 20B

SEE MAP 30 5 19D

30 5 19A