

THIS MAP WAS PREPARED FOR ASSESSMENT PURPOSE ONLY.

SEC.19 T30S. R.5W. W.M. DOUGLAS COUNTY
1" = 400'

REVISED ON 7-29-13

30 5 19 & INDEX

CANCELLED NO'S

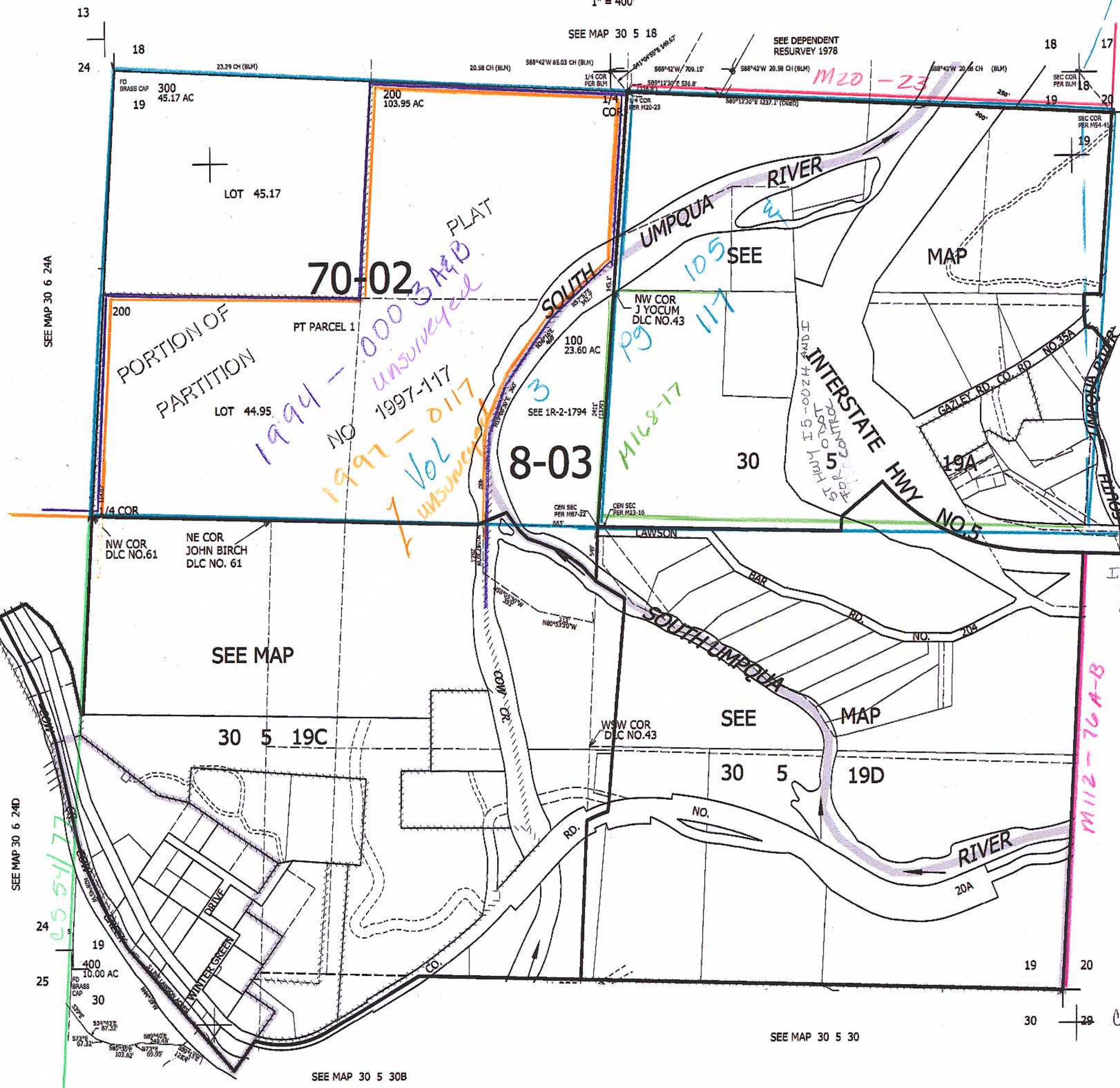
SEE MAP 30 5 20B

SEE ST HWY IS-013A-B FOR CONTROL AROUND FORDS BRIDGE

SEE MAP 30 5 20C

cm 9/23/13

30 5 19 & INDEX



SEE MAP 30 6 24D

24
19
25

400
10.00 AC
FD BRASS CAP

53°22' E 67.52'
57°36' E 67.52'
58°15' E 107.62'
58°40' E 69.95'
58°15' E 126.91'

SEE MAP 30 5 30B

SEE MAP 30 5 30

19
20
30

4,165,000

477,000