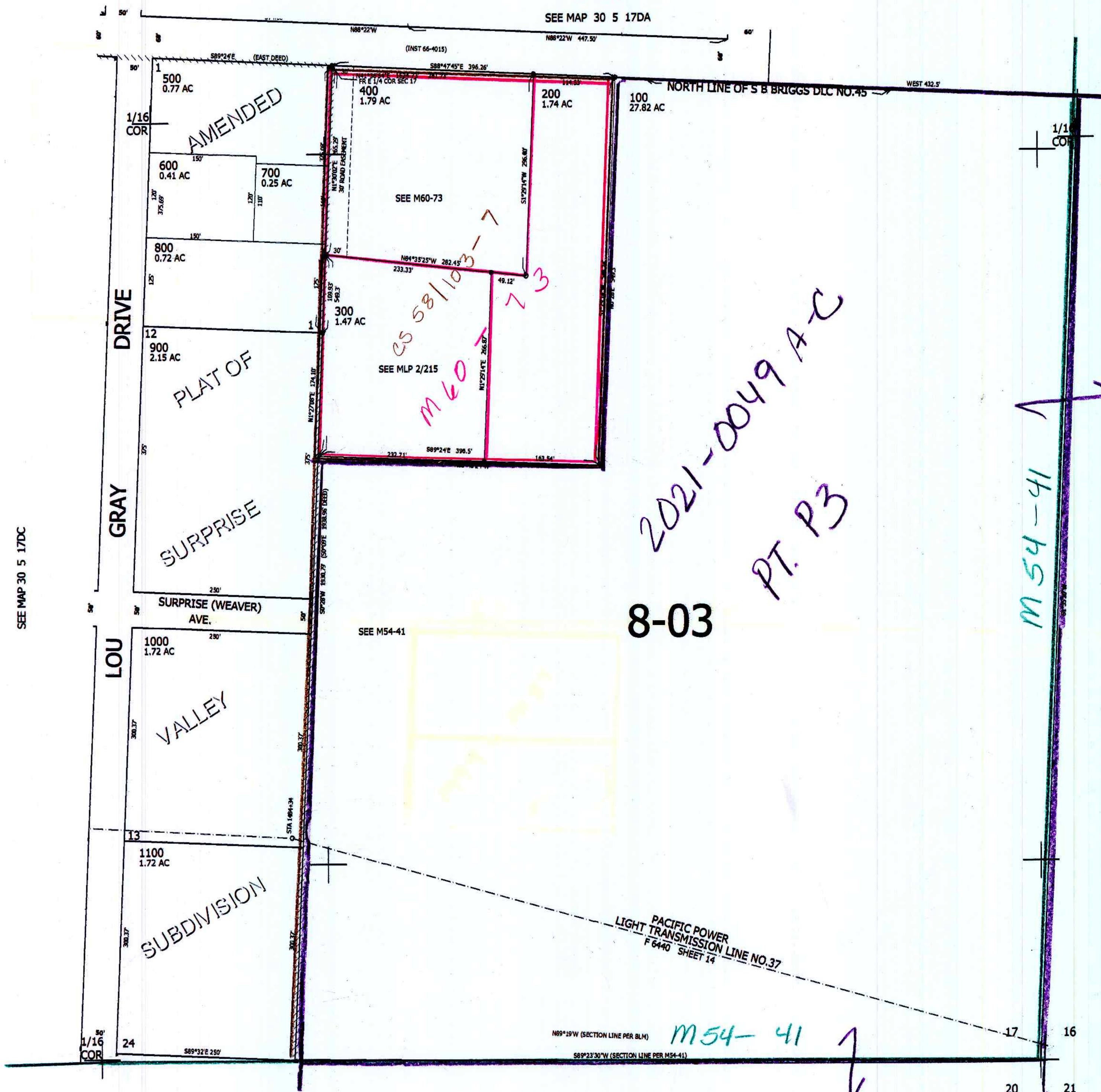


THIS MAP WAS PREPARED FOR ASSESSMENT PURPOSE ONLY.

SE1/4 SE1/4 SEC.17 T30S. R.5W. W.M.
DOUGLAS COUNTY
1" = 100'

REVISED ON
7-29-13

30 5 17DD



SEE MAP 30 5 17DC

CANCELLED NO'S

SEE MAP 30 5 16

2021-0049 A-C
PT. P3
8-03

M54-41

482,500

M54-41

am 9/3/13

JCV

SEE MAP 30 5 20AA

30 5 17DD

4,170,500