

THIS MAP WAS PREPARED FOR ASSESSMENT PURPOSE ONLY.

NW1/4 SE1/4 SEC.17 T30S. R.5W. W.M.
DOUGLAS COUNTY

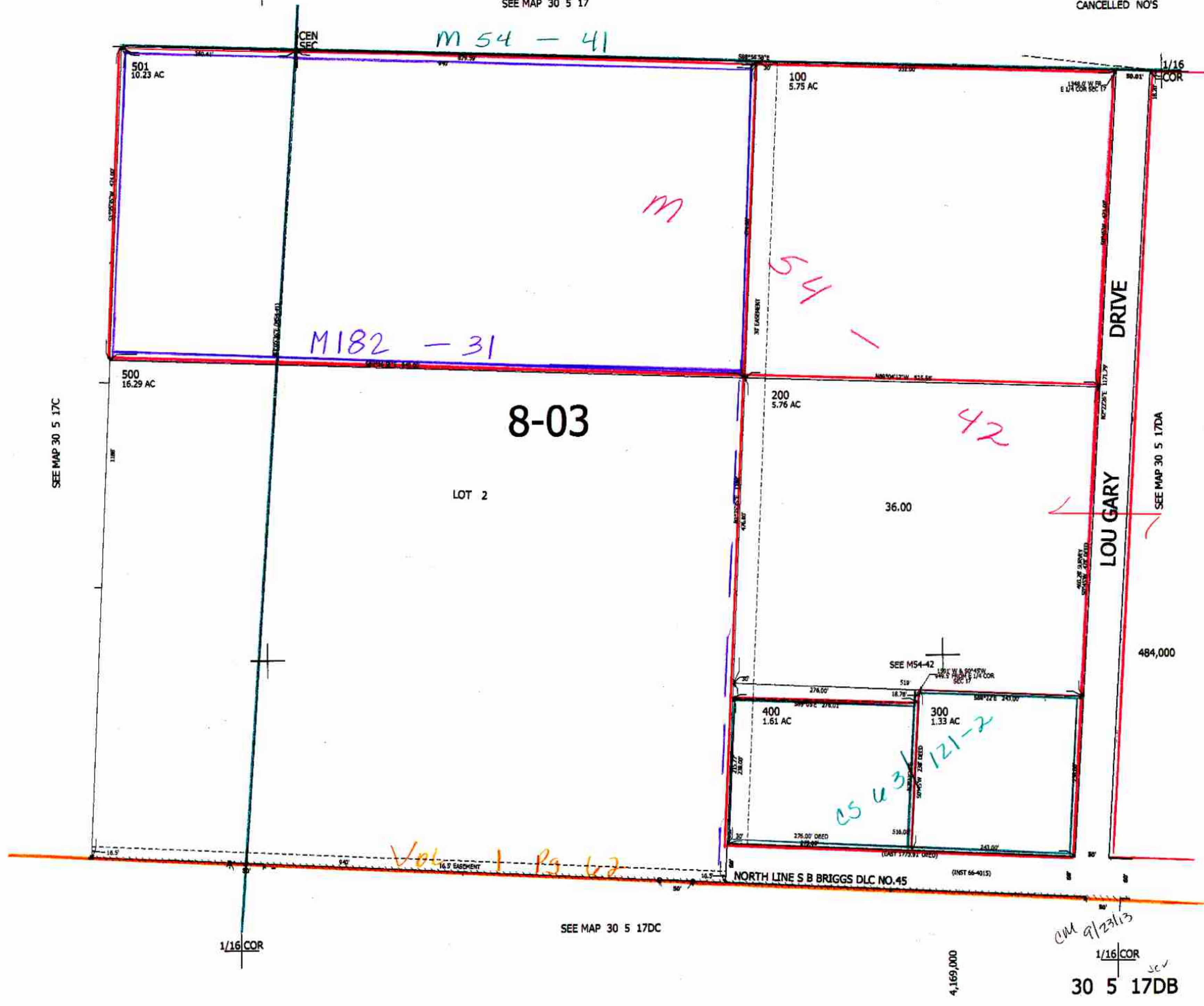
REVISED ON
7-29-13

30 5 17DB

1" = 100'

SEE MAP 30 5 17

CANCELLED NO'S



SEE MAP 30 5 17C

SEE MAP 30 5 17DA

SEE MAP 30 5 17DC

4,169,000

CW 9/23/13

1/16 COR

30 5 17DB