

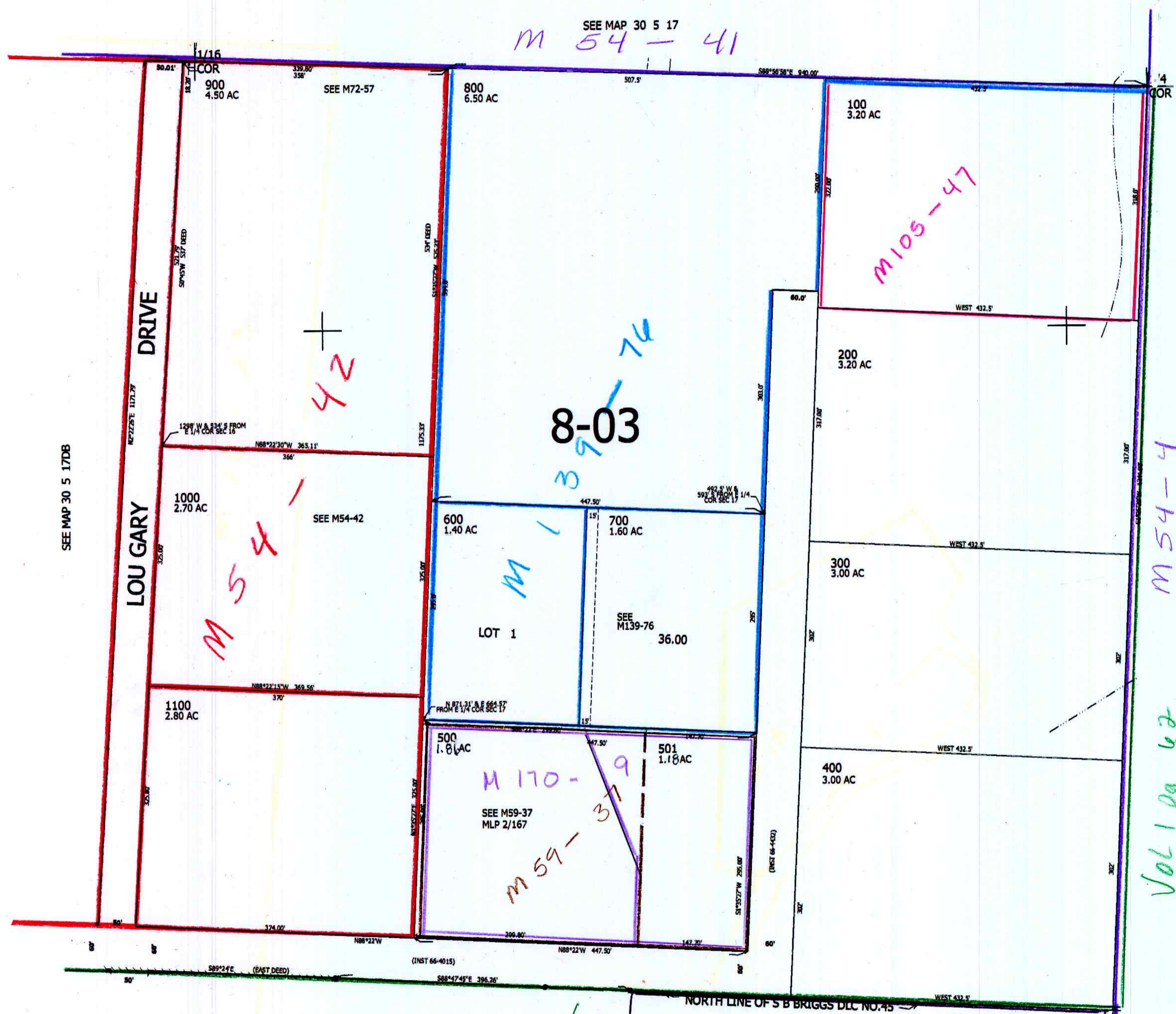
THIS MAP WAS PREPARED FOR ASSESSMENT PURPOSE ONLY.

NE1/4 SE1/4 SEC.17 T30S. R.5W. W.M.
DOUGLAS COUNTY
1" = 100'

REVISED ON
7-29-13

30 5 17DA

SEE MAP 30 5 17
M 54 - 41



CANCELLED NO'S

SEE MAP 30 5 17DB

SEE MAP 30 5 16

M 54-4
Vol 1 pg 62

Vol 1 pg 62 2021-0049 AC

am 9/24/13

1/16 COR

1/16 COR

SEE MAP 30 5 17DD

483,500

30 5 17DA