

THIS MAP WAS PREPARED FOR ASSESSMENT PURPOSE ONLY.

SEC.14 T30S. R.5W. W.M.
DOUGLAS COUNTY

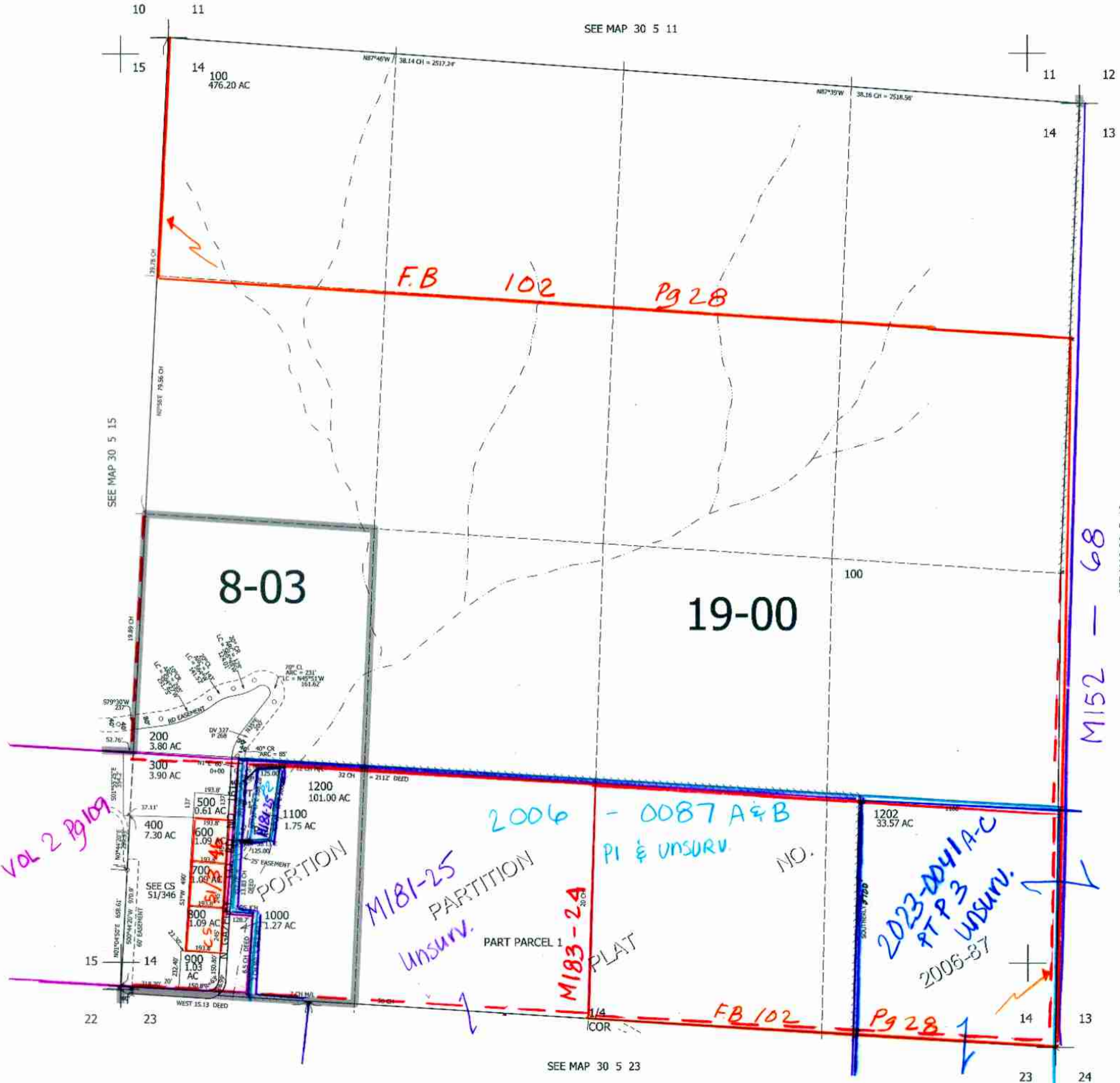
REVISED ON
8-25-22

30 5 14

1" = 400'

SEE MAP 30 5 11

CANCELLED NO'S
1201



SEE MAP 30 5 15

SEE MAP 30 5 13

M152 - 68

Vol 2 Pg 109

9/2022 Dr
see

SEE MAP 30 5 23

482,000

30 5 14

4,186,000