

THIS MAP WAS PREPARED FOR ASSESSMENT PURPOSE ONLY.

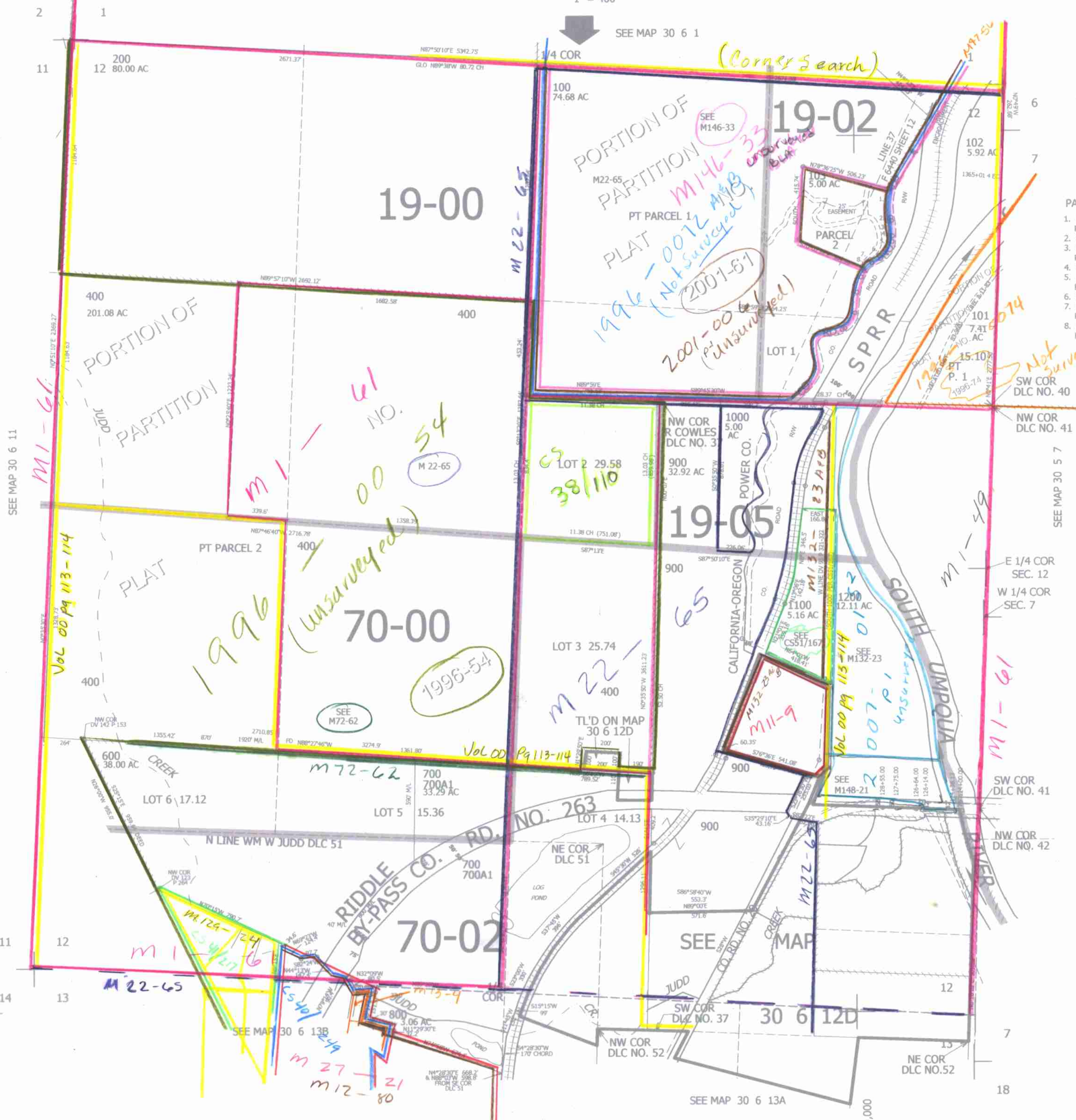
SEC.12 T30S. R.6W. W.M. DOUGLAS COUNTY

REVISED ON 6-6-07

30 6 12 & INDEX

1" = 400'

SEE MAP 30 6 1



CANCELLED 300 500 104 105

PARCEL 103

1. LC=S0°21'52"E 167.05' R=372.59' A=168.49'
2. S13°19'09"E 18.04' R=95.75' A=102.13'
3. LC=S6°32'05"E 83.56' R=353.67' A=83.76'
4. S0°15'W 31.4' R=115.49' A=40.91'
5. LC=S30°48'30"W 97.36' R=95.75' A=102.13'
6. S61°21'60"W 54.71' R=115.49' A=40.91'
7. LC=S51°13'10"W 40.7' R=115.49' A=40.91'
8. LC=S36°15'14"W 19.4' R=115.49' A=19.42'

Not surveyed

SW COR DLC NO. 40

NW COR DLC NO. 41

SEE MAP 30 5 7

E 1/4 COR SEC. 12

W 1/4 COR SEC. 7

SW COR DLC NO. 41

NW COR DLC NO. 42

SEE MAP 30 6 13A

SW COR DLC NO. 37

NW COR DLC NO. 52

NE COR DLC NO. 52

SEE MAP 30 6 13A

SW COR DLC NO. 37

NW COR DLC NO. 52

NE COR DLC NO. 52

SEE MAP 30 6 13A

SW COR DLC NO. 37

NW COR DLC NO. 52

NE COR DLC NO. 52

SEE MAP 30 6 13A

489,000
4,159,000
30 6 12 & INDEX