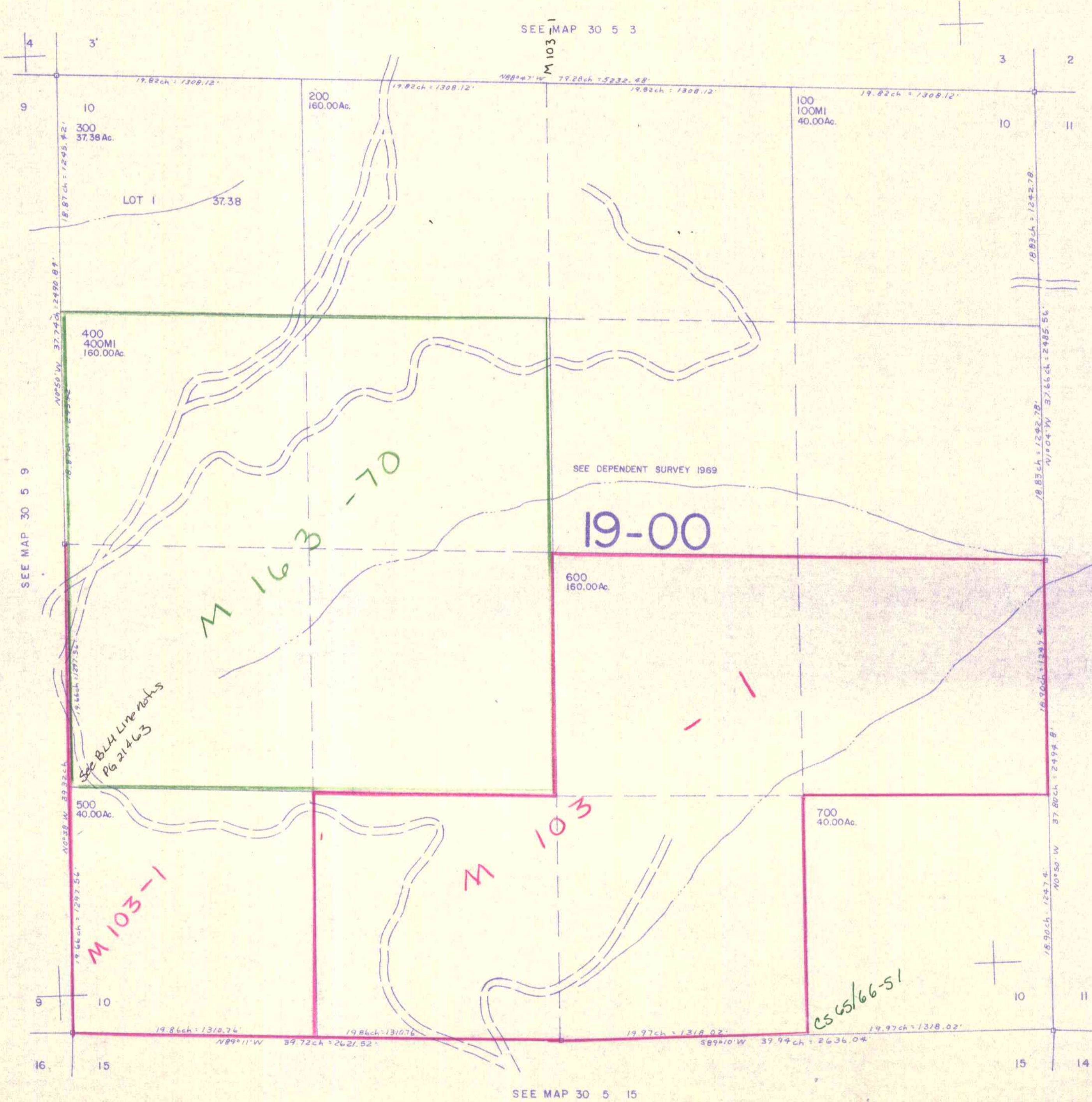


This map was prepared for assessment purpose only.

SECTION 10 T.30S. R.5 W. W.M.
DOUGLAS COUNTY

30 5 10

1" = 400'



SEE MAP 30 5 9

SEE MAP 30 5 3

SEE MAP 30 5 11

SEE MAP 30 5 15

487,500

30 5 10

1,260,000

8/82 fh