

THIS MAP WAS PREPARED FOR ASSESSMENT PURPOSE ONLY.

NE1/4 SW1/4 SEC.8 T30S. R.5W. W.M.
DOUGLAS COUNTY
1" = 100'

REVISED ON

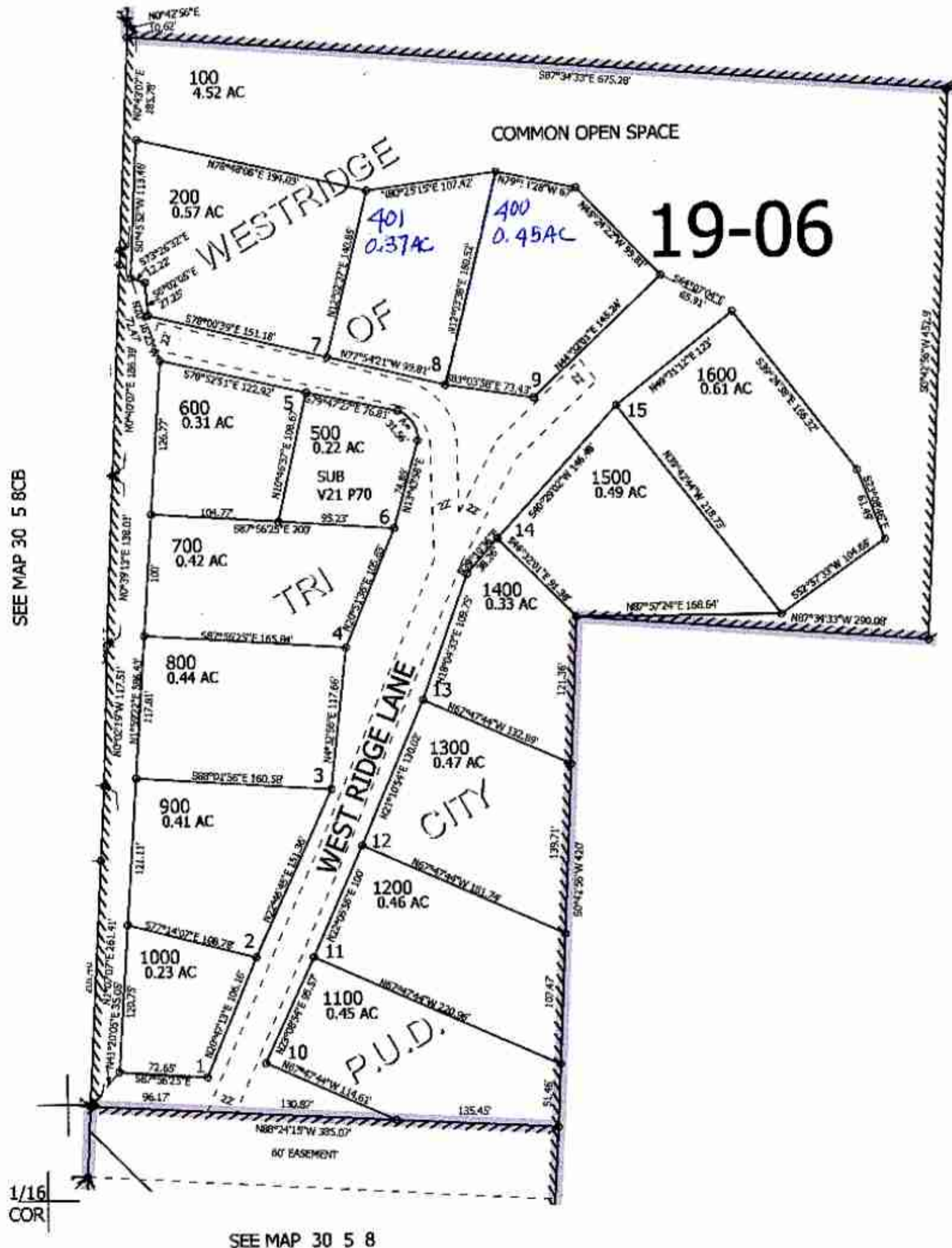
30 5 8CA

CANCELLED NO'S
300

1/16 COR

CEN SEC

SEE MAP 30 5 8B



SEE MAP 30 5 8

489,000

4,168,000

1/16 COR

30 5 8CA