

THIS MAP WAS PREPARED FOR ASSESSMENT PURPOSE ONLY.

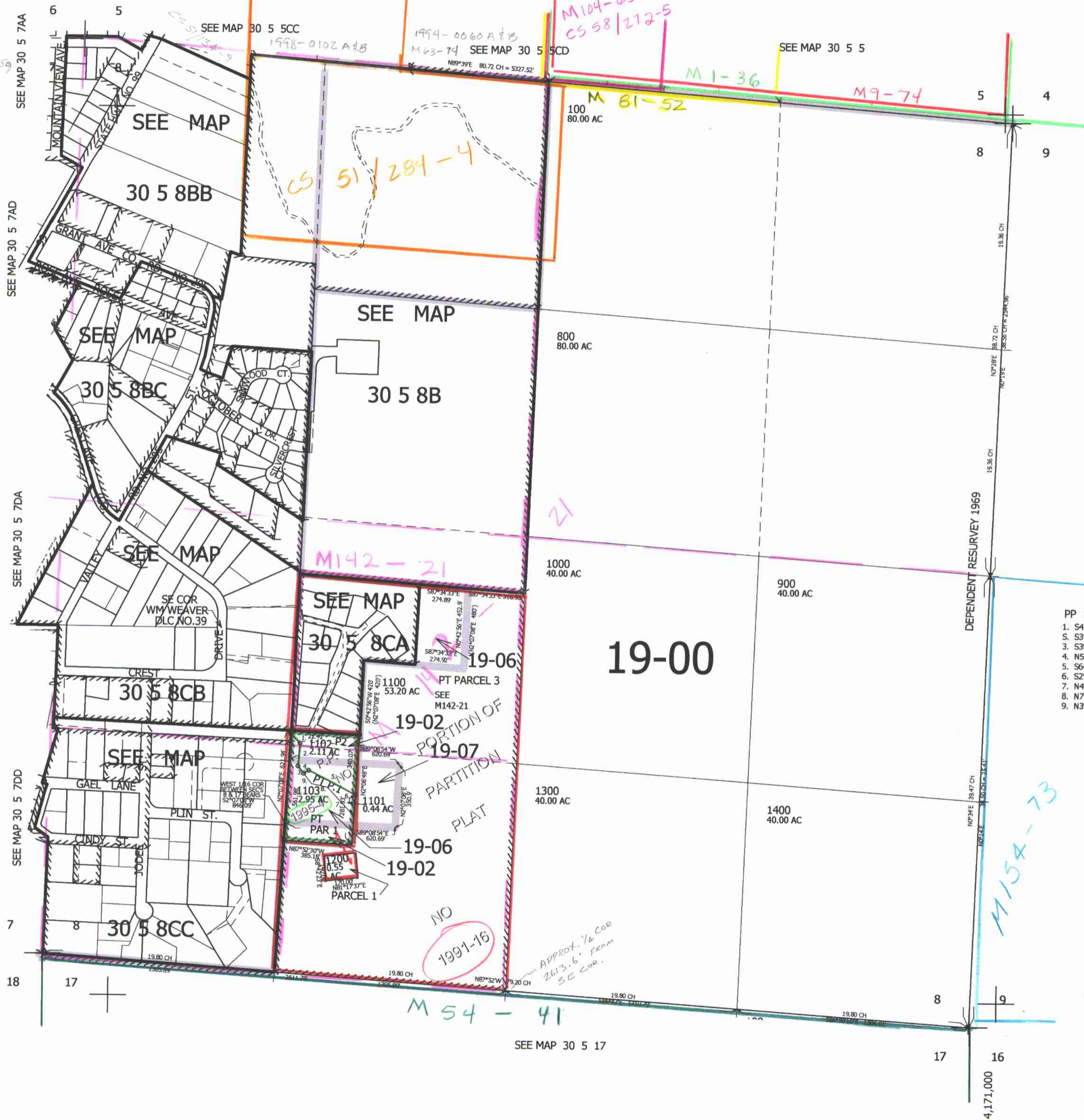
SEC.8 T30S. R.5W. W.M. DOUGLAS COUNTY

REVISED ON 3-14-06

30 5 8 & INDEX

1" = 400'

CANCELLED NO'S  
601 602 200  
300 300A1 400  
500 600 700



- PP 1995-4
1. S45°51'02"E 77.68'
  2. S3°23'28"W 128.57'
  3. S39°58'52"E 52.2'
  4. N55°52'22"E 33'
  5. S64°11'52"E 293.4'
  6. S2°06'48"W 118'
  7. N44°44'53"W 215.59'
  8. N79°29'23"W 90'
  9. N39°08"W 74.23'

487,500

30 5 8 & INDEX

JP