

THIS MAP WAS PREPARED FOR ASSESSMENT PURPOSE ONLY.

NE1/4 SE1/4 SEC.7 T30S. R.5W. W.M. DOUGLAS COUNTY

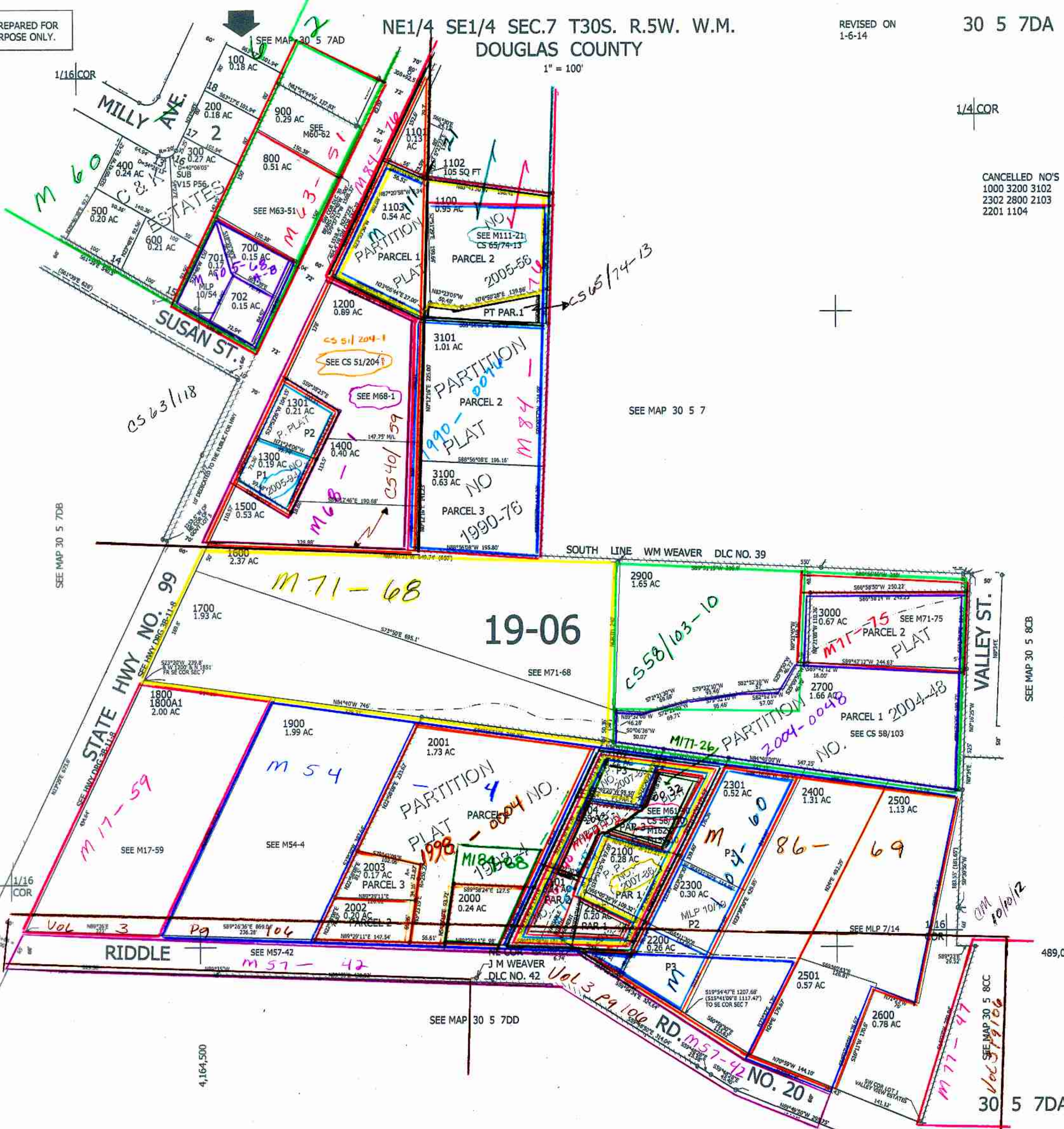
REVISED ON 1-6-14

30 5 7DA

1" = 100'

1/4 COR

CANCELLED NO'S
1000 3200 3102
2302 2800 2103
2201 1104



SEE MAP 30 5 7DB

SEE MAP 30 5 7

SEE MAP 30 5 8CB

SEE MAP 30 5 8CC

30 5 7DA

489,000

4,164,500

RIDDLE

J M WEAVER
DLC NO. 42

RD. M57-42 NO. 20

19-06

NE1/4 SE1/4 SEC.7 T30S. R.5W. W.M.
DOUGLAS COUNTY

1/16 COR

MILLY AVE.
SUSAN ST.

STATE HWY NO. 99

SOUTH LINE WM WEAVER DLC NO. 39

VALLEY ST.

1/16 COR

1/16 COR

VOL 3

SEE M57-42

M57-42

SEE MAP 30 5 7DD

SEE MAP 30 5 8CC

30 5 7DA

489,000

4,164,500

RIDDLE

J M WEAVER
DLC NO. 42

RD. M57-42 NO. 20

19-06

NE1/4 SE1/4 SEC.7 T30S. R.5W. W.M.
DOUGLAS COUNTY

1/16 COR

MILLY AVE.
SUSAN ST.

STATE HWY NO. 99

SOUTH LINE WM WEAVER DLC NO. 39

VALLEY ST.

1/16 COR

1/16 COR

VOL 3

SEE M57-42

M57-42

SEE MAP 30 5 7DD

SEE MAP 30 5 8CC

30 5 7DA

489,000

4,164,500