

THIS MAP WAS PREPARED FOR ASSESSMENT PURPOSE ONLY.

SW1/4 SEC.7 T30S. R.5W. W.M.  
DOUGLAS COUNTY  
1" = 200'

REVISED ON  
11-10-20

30 5 7C

VOL 4 PG 100

VOL 4 PG 24

CANCELLED NO'S  
600 201 202  
101 1100 1200  
207

CEN  
SEC

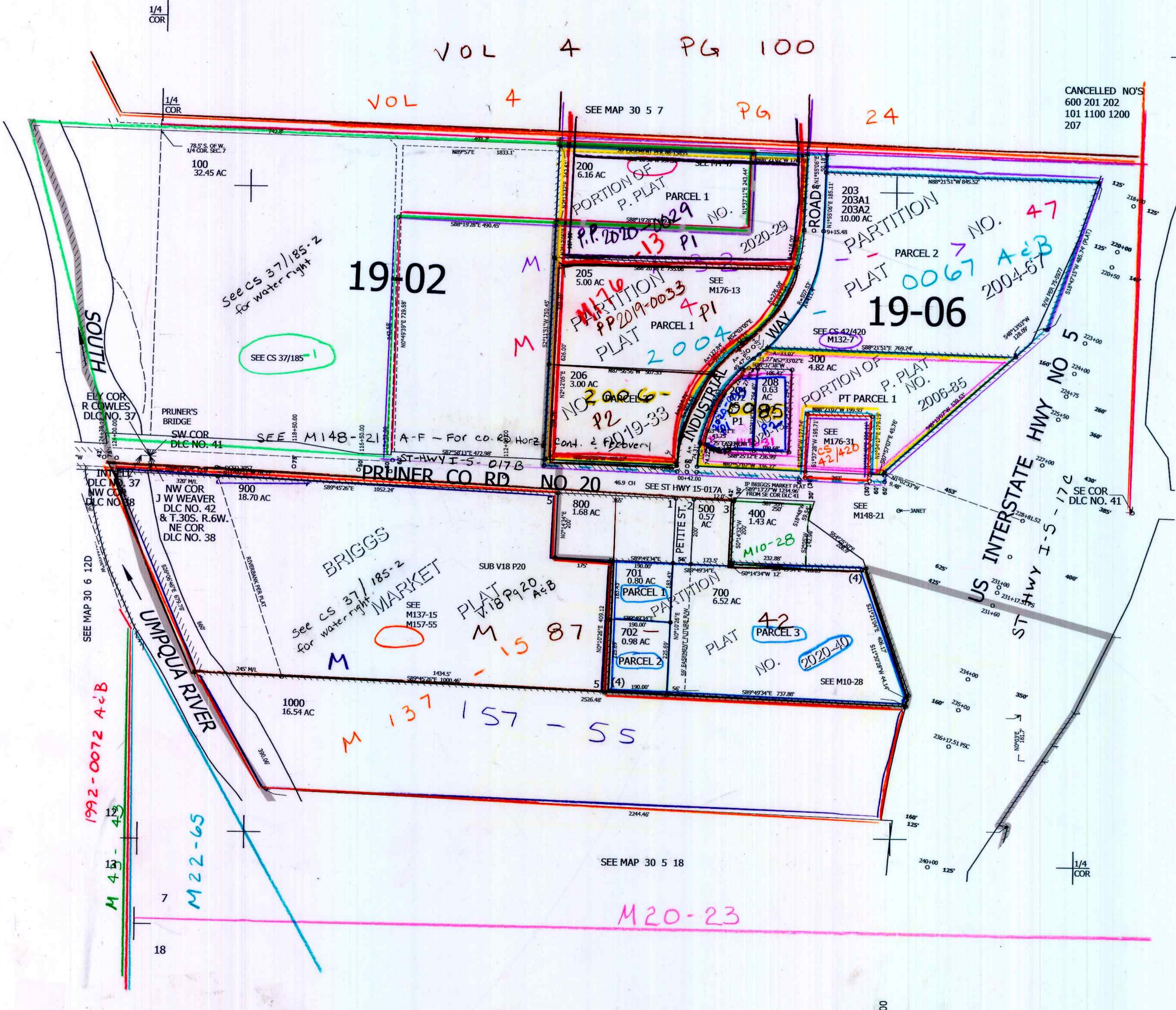
SEE MAP 30 5 7DB

SEE MAP 30 5 7DC

488,000

4,162,000

10/2006 30 5 7C  
RV



1/4  
COR

1/4  
COR

SW COR  
DLC NO. 41

IN NW COR  
DLC NO. 38

NW COR  
DLC NO. 42  
& T.30S. R.6W.  
NE COR  
DLC NO. 38

SEE MAP 30 6 12D

SEE CS 37/185-2  
for water right

SEE CS 37/185-2  
for water right

SEE CS 37/185-2  
for water right

SEE CS 37/185-2  
for water right

SEE CS 37/185-2  
for water right

SEE CS 37/185-2  
for water right

SEE CS 37/185-2  
for water right

1/4  
COR