

THIS MAP WAS PREPARED FOR ASSESSMENT PURPOSE ONLY.

NE1/4 NE1/4 SEC.7 T30S. R.5W. W.M. DOUGLAS COUNTY

1" = 100'

REVISED ON 5-10-06

30 5 7AA

1/16 COR

SEE MAP 30 5 6DD

6 5
7 8

CANCELLED NO'S

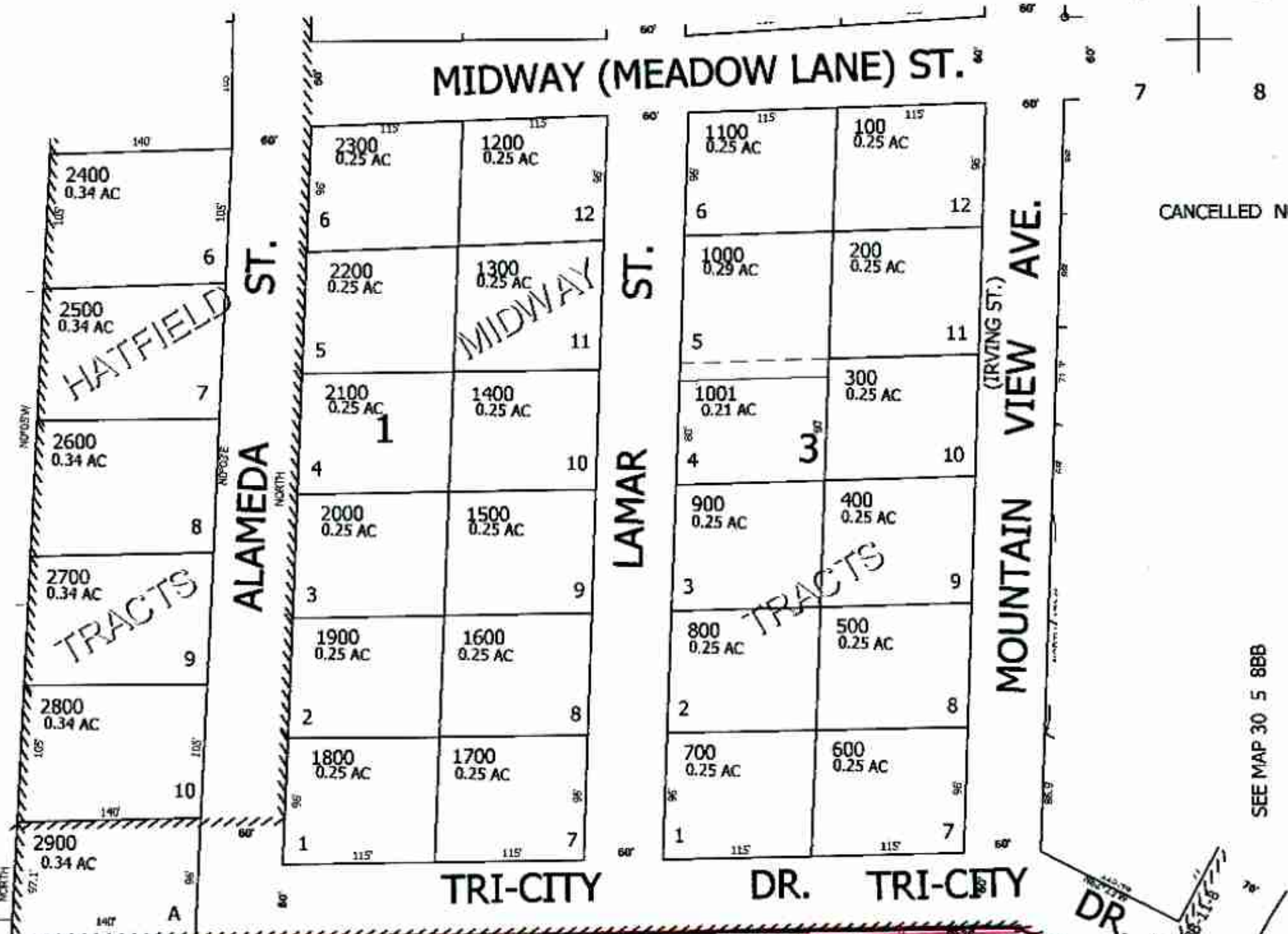
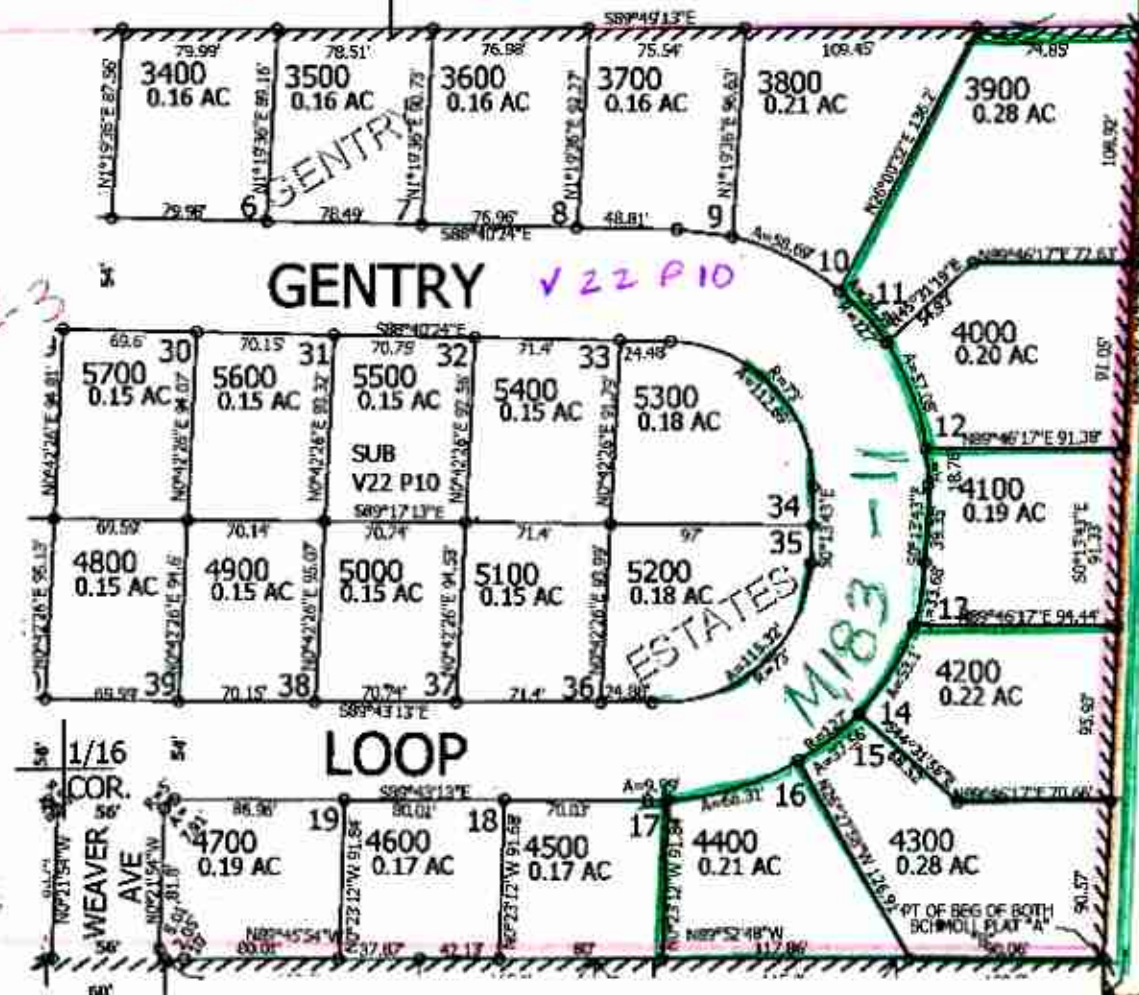
SEE MAP 30 5 7

SEE MAP 30 5 8BB

SEE M 171-33 for 2011 Retrievement survey of Gentry Est.

CS 55/302-3

SEE MAP 30 5 7AB



19-06

M 9-75

SEE M 74-32

STATE HWY NO. 99

1/16 COR

SEE MAP 30 5 7AD

4,165,500

30 5 7AA