

THIS MAP WAS PREPARED FOR ASSESSMENT PURPOSE ONLY.

NW1/4 SE1/4 SEC.5 T30S. R.5W. W.M.
DOUGLAS COUNTY

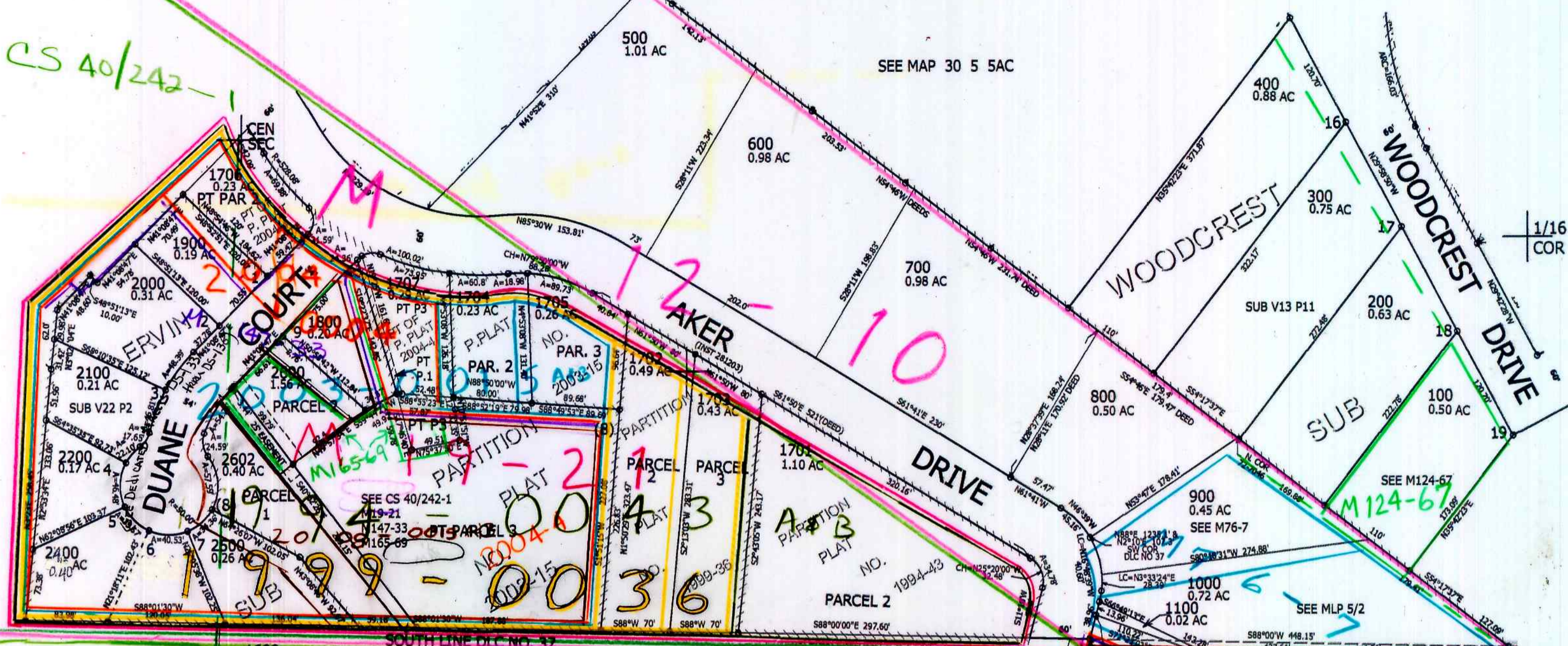
REVISED ON
11-25-13

30 5 5DB

1" = 100'

CS 40/242

SEE MAP 30 5 5AC



1/16 COR

+

CANCELLED NO'S
1708 1709 1710
1711 1712 1713
1714 1700 1801
1601 1501 1502
1503 1504 2601
2603, 2300

SEE MAP 30 5 5CA

1600
1600A1
23.61 AC

19-06

M 9-74
M 1-36
FOR SUBD. OF SECTION
SEE A-4-35

M 71-70

SEE M71-70

25.74

VOL. 1 PG 155

SEE MAP 30 5 5DA

1/16 COR

VOL. 1 PG 155

SEE MAP 30 5 5

+

494,000

4,170,000

30 5 5DB

scv 4/03 JP