

SW1/4 SW1/4 SEC.5 T.30S. R.5W. W.M.
DOUGLAS COUNTY

6-13-03

30 5 5CC

THIS MAP WAS PREPARED FOR
ASSESSMENT PURPOSE ONLY.

1"=100'

APPROX.
1/16 COR.

SEE MAP 30 5 5

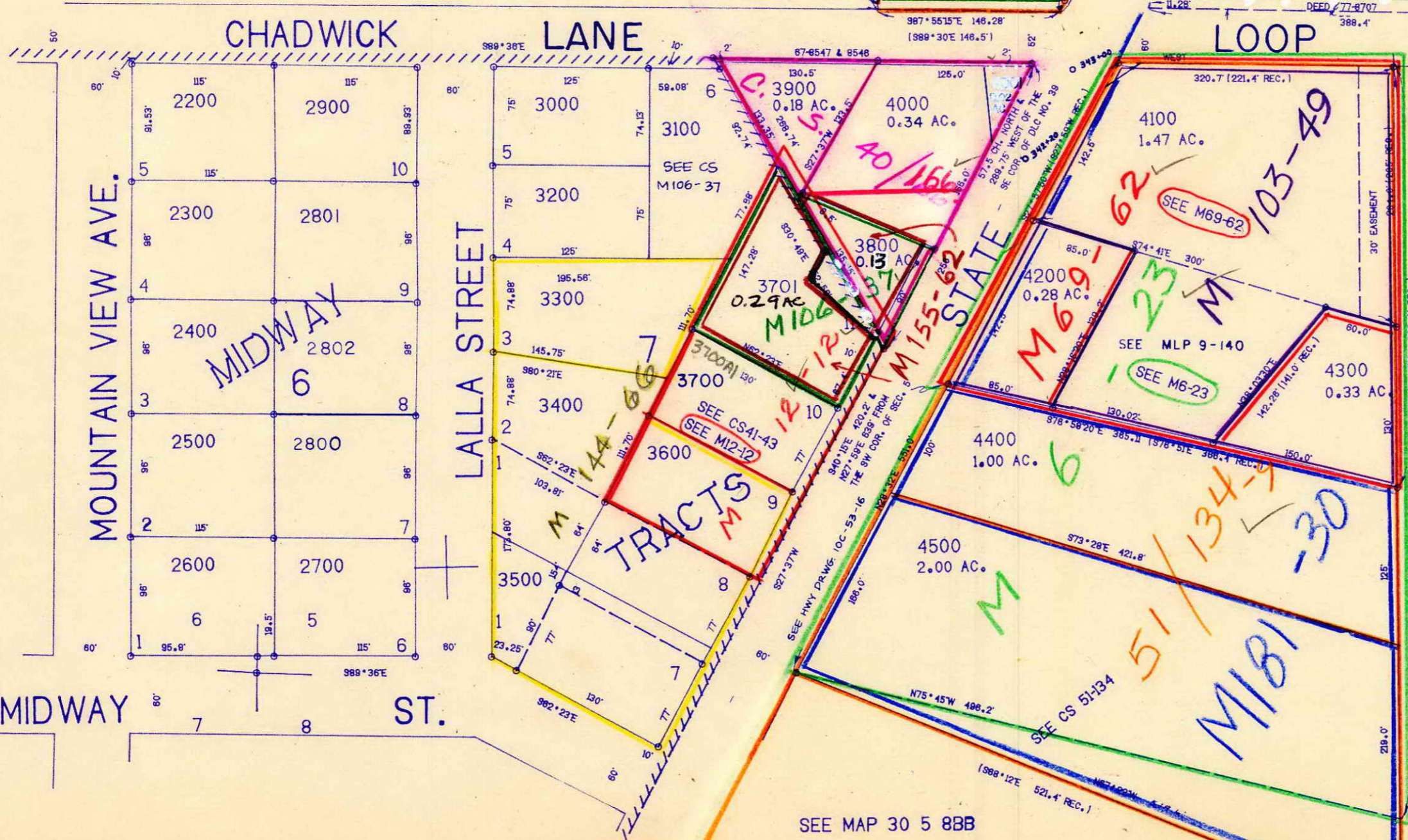
APPROX.
1/16 COR.

CANCELLED NO'S
801 802
400

FOR SUBD. OF
SECTION See M1-35

SEE MAP 30 5 5

SEE MAP 30 5 5CD



SEE MAP 30 5 6DD

493,000

1/16 COR.

1,246,000

30 5 5CC

6/18/03
cm/oh