

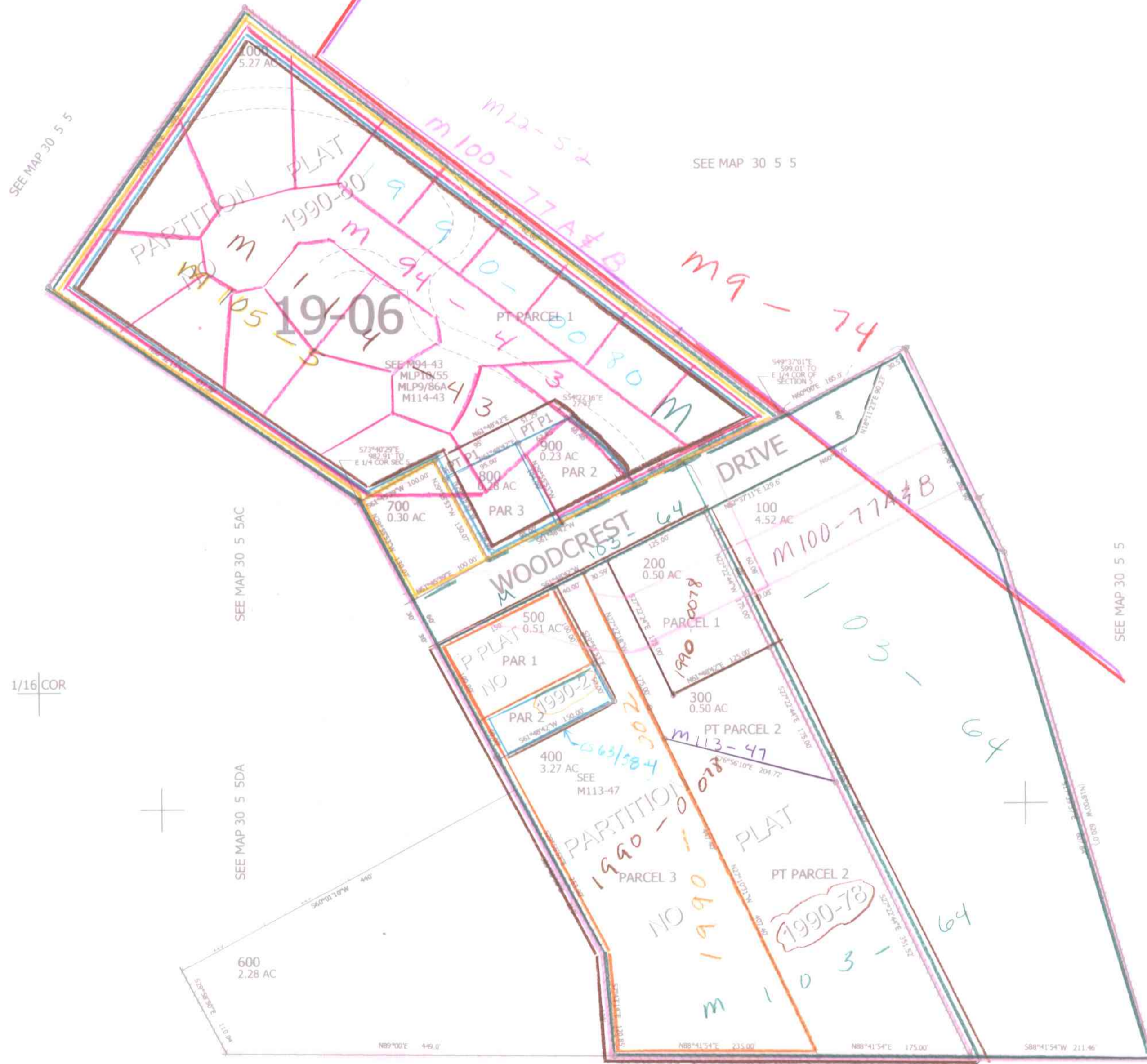
THIS MAP WAS PREPARED FOR ASSESSMENT PURPOSE ONLY.

SE1/4 NE1/4 SEC.5 T30S. R.5W. W.M.
DOUGLAS COUNTY
1" = 100'

REVISED ON
6-11-13

30 5 5AD

CANCELLED NO'S
1001 1002 301



SEE MAP 30 5 5

SEE MAP 30 5 5

SEE MAP 30 5 5AC

SEE MAP 30 5 5

1/16 COR

SEE MAP 30 5 5DA

1/4 COR

495,000

4,170,000

SEE MAP 30 5 5DA

CM
6/21/13
JC

30 5 5AD