

THIS MAP WAS PREPARED FOR ASSESSMENT PURPOSE ONLY.

SW1/4 NE1/4 SEC.5 T30S. R.5W. W.M. DOUGLAS COUNTY

1" = 100'

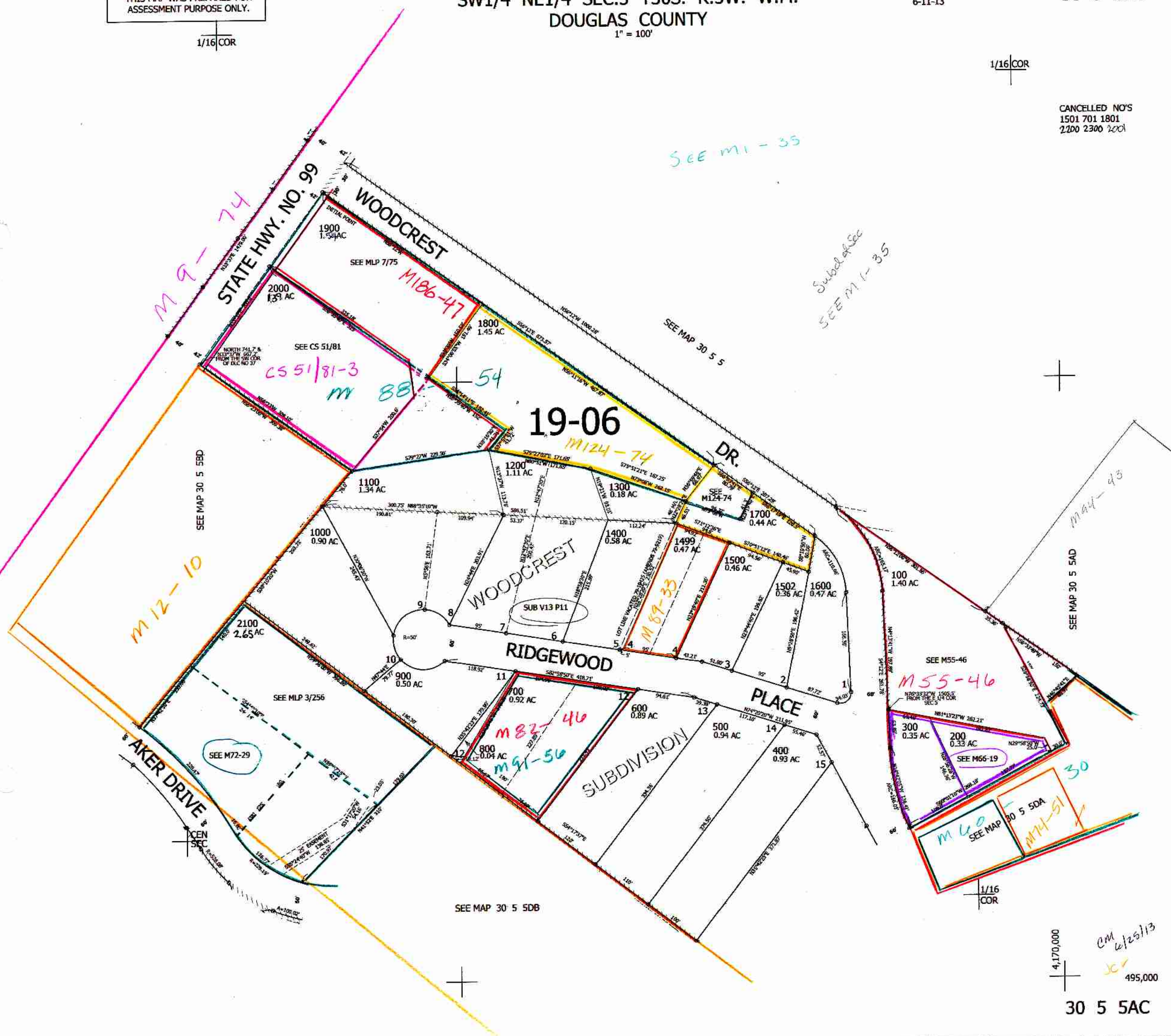
REVISED ON 6-11-13

30 5 5AC

1/16 COR

1/16 COR

CANCELLED NO'S 1501 701 1801 2200 2300 2001



SEE M1-35

Subd of Sec SEE M1-35



M 44-43

SEE MAP 30 5 5AD

SEE M55-46

M 55-46

SEE M66-19

SEE MAP 30 5 5DA

1/16 COR

SEE MAP 30 5 5DB



4,170,000

cm 6/25/13
JC
495,000

30 5 5AC