

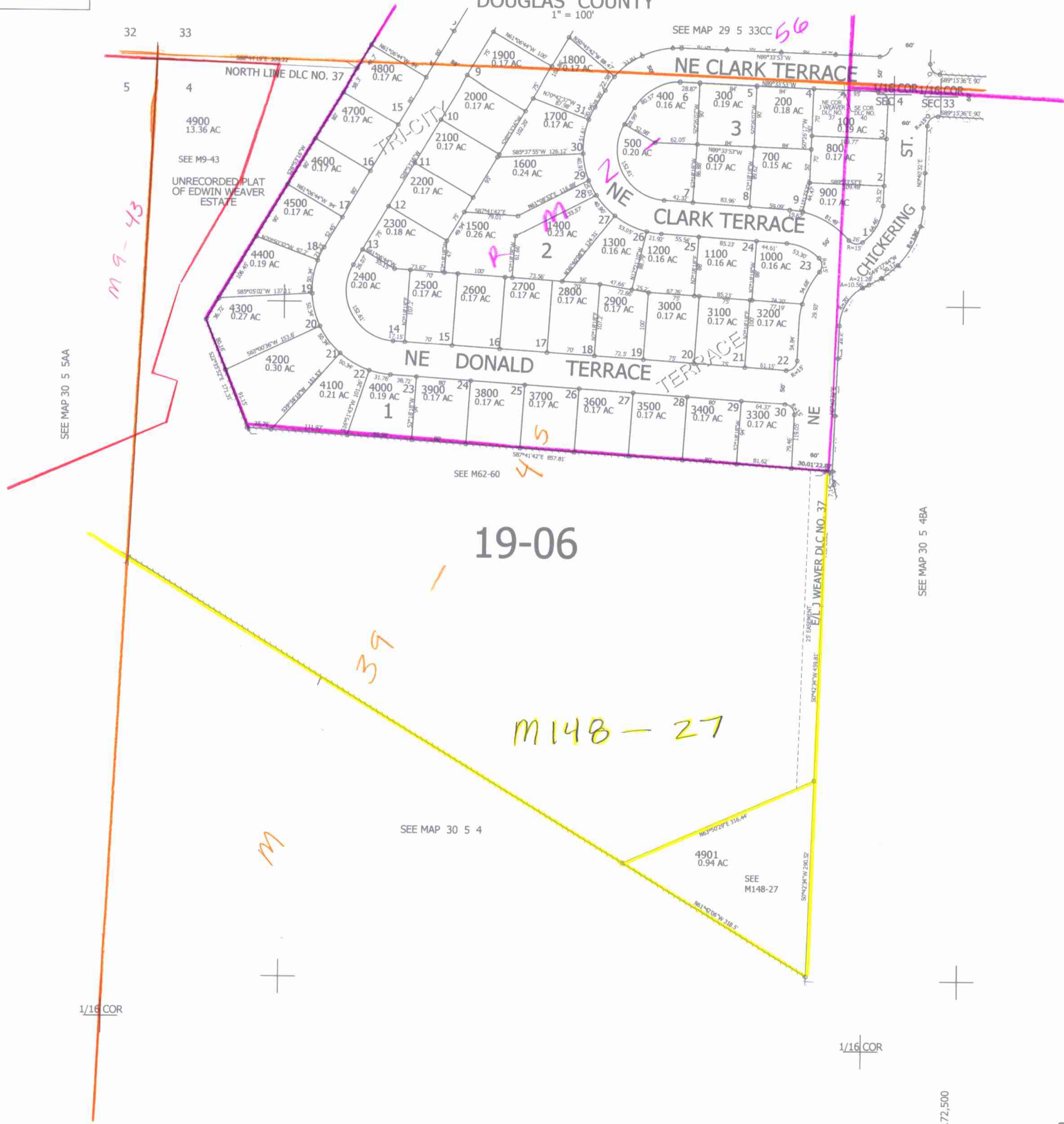
THIS MAP WAS PREPARED FOR ASSESSMENT PURPOSE ONLY.

NW1/4 NW1/4 SEC.4 T30S. R.5W. W.M.
DOUGLAS COUNTY

REVISED ON
4-6-09

30 5 4BB

1" = 100'



CANCELLED NO'S

19-06

M148-27

M9-43

M

M39-43

SEE M148-27

SEE MAP 30 5 4

1/16 COR

1/16 COR

496,500

4,172,500

CHW 11/13/09

30 5 4BB