

SE1/4 SE1/4 SEC.1 T.27S. R.6W. W.M.
DOUGLAS COUNTY

REVISED ON
3-11-10

27 6 1DD
ROSEBURG

1" = 100'

CANCELLED NO'S
9001 9101 2701

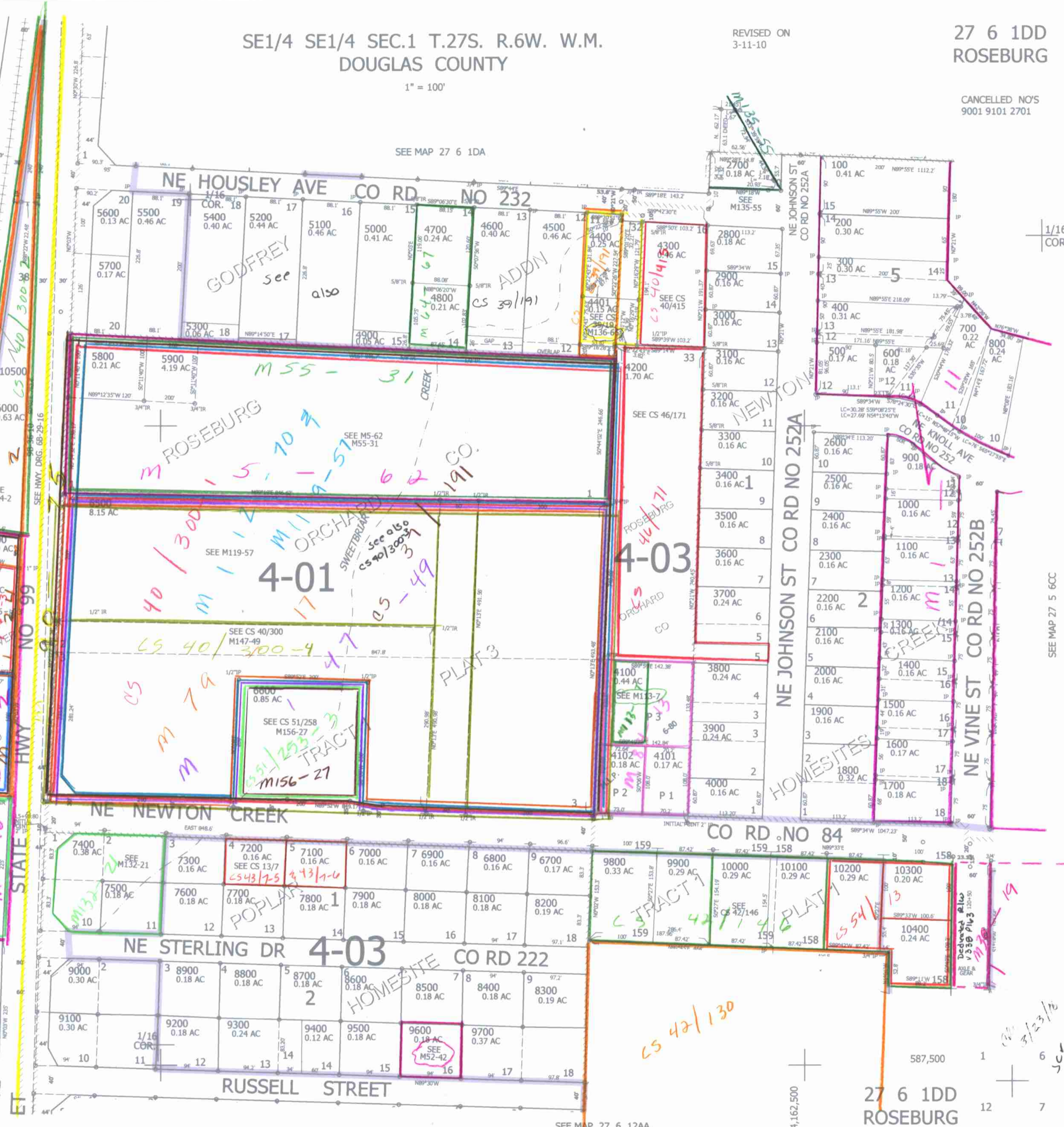
SEE MAP 27 6 1DA

THIS MAP WAS PREPARED FOR
ASSESSMENT PURPOSE ONLY.

4-45

SEE MAP 27 6 1

SOUTHERN PACIFIC RR
10500A1
STATE HWY NO 99



1/16
COR

SEE MAP 27 5 6CC

SEE MAP 27 6 12A

27 6 1DD
ROSEBURG

4,162,500

587,500

6

7

3/23/10

501