

This map was prepared for assessment purpose only.

SECTION 1 T.30S. R.5W. W.M.  
DOUGLAS COUNTY

M 149-60

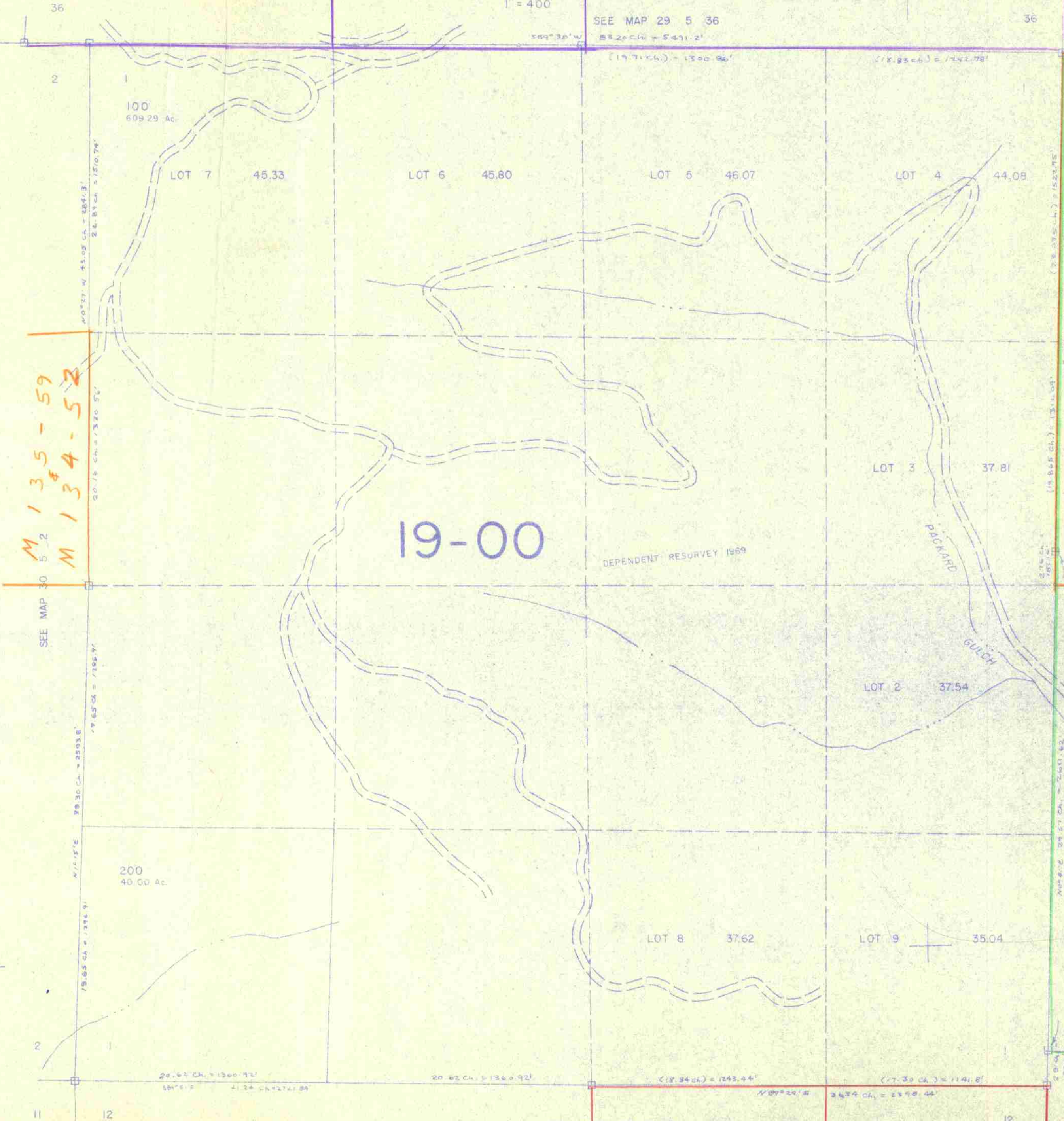
1" = 400'

SEE MAP 29 5 36

S89°32'W 582.54' = 541.2'

(177.66) = 150.96'

(18.8566) = 142.78'



M 135-59  
M 134-52

M 78-30

M 129-44

M 7-50

1,270,000

9/9/59