

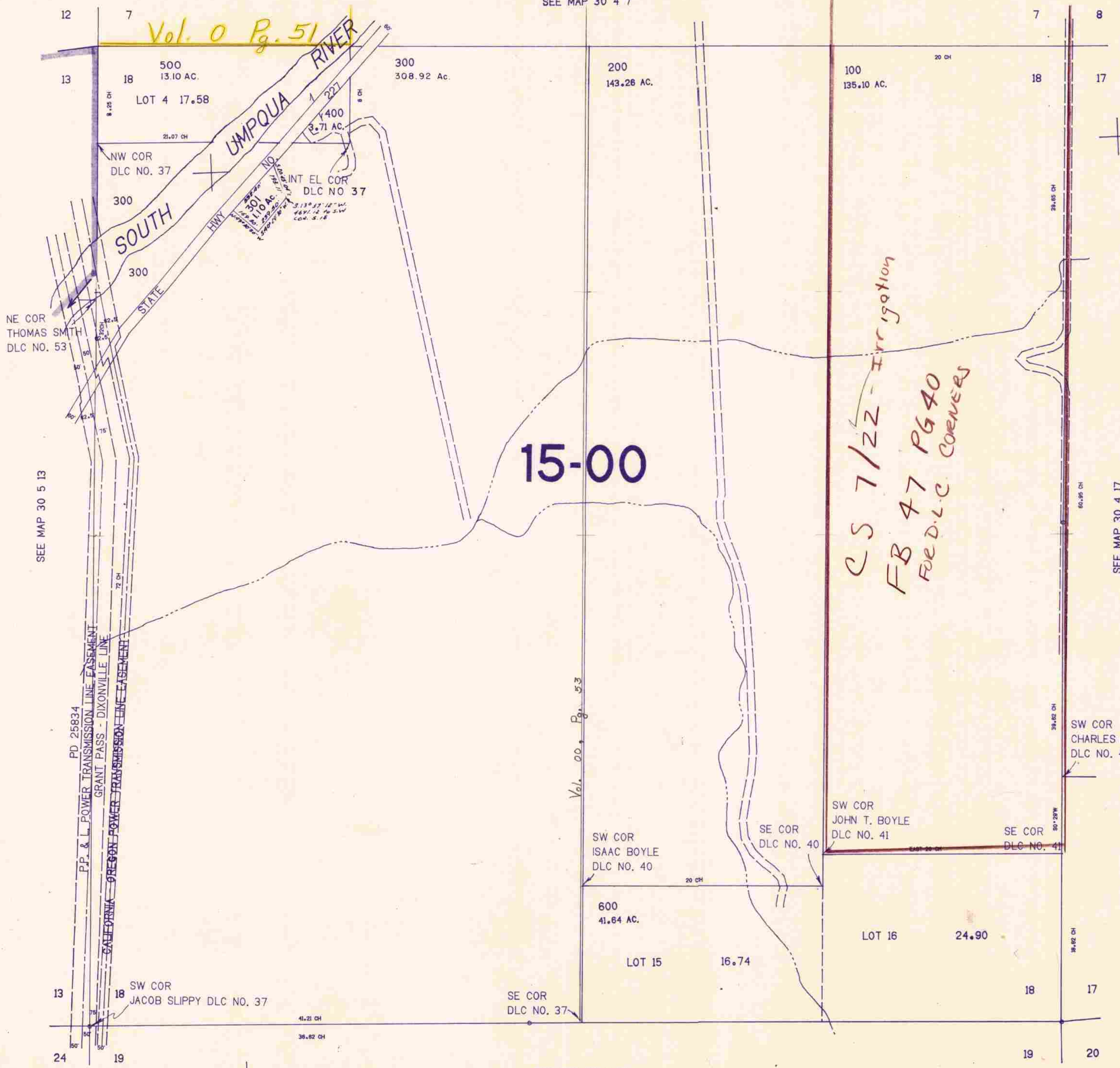
SECTION 18 T.30S. R.4W. W.M.
DOUGLAS COUNTY

30 4 18

THIS MAP WAS PREPARED FOR
ASSESSMENT PURPOSE ONLY.

1"=400'

SEE MAP 30 4 7



SEE MAP 30 5 13

SEE MAP 30 4 17

SEE MAP 30 4 19

481.000

30 4 18

1276.000
10/84
BS