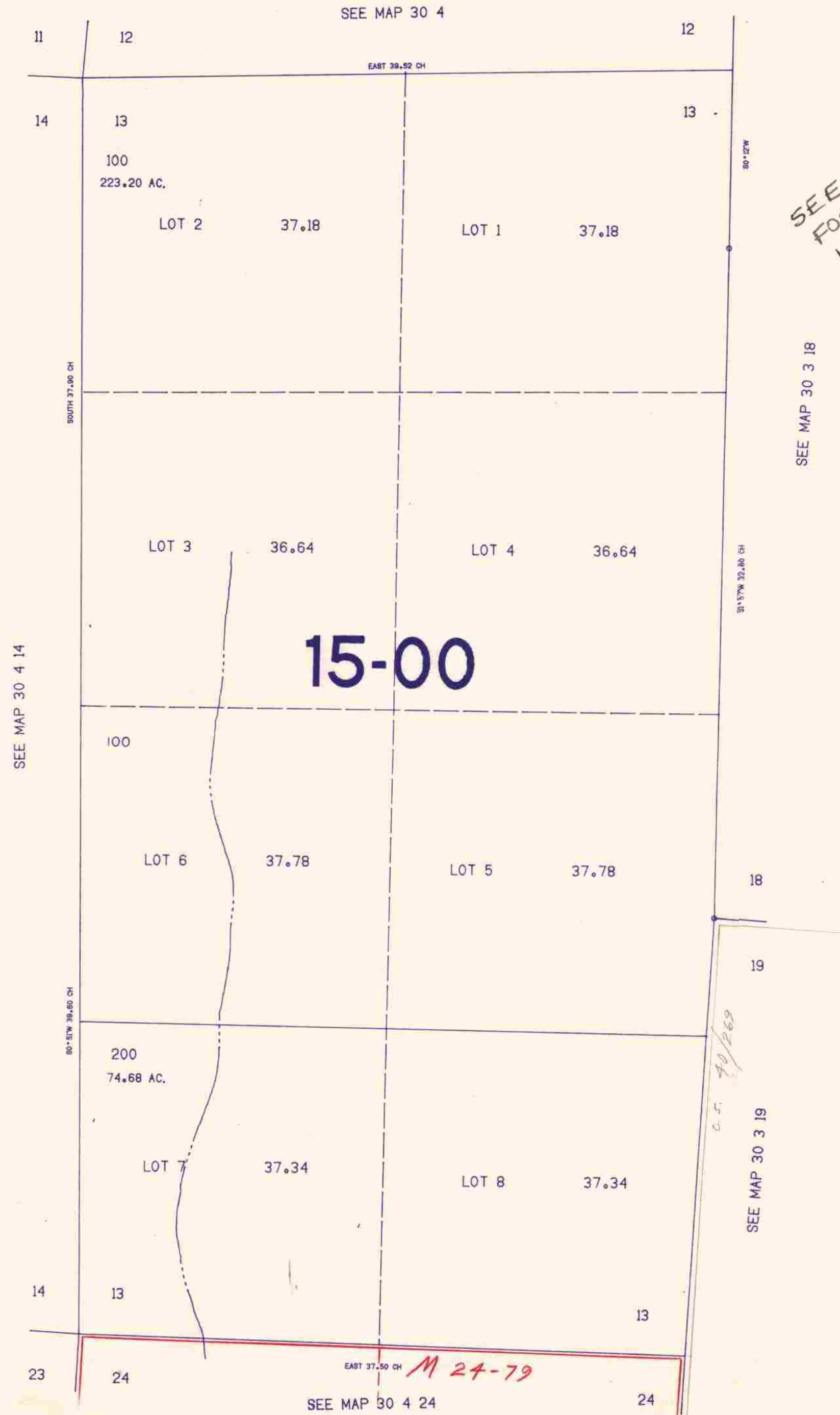


SECTION 13 T.30S. R.4W. W.M.
DOUGLAS COUNTY

30 4 13

THIS MAP WAS PREPARED FOR
ASSESSMENT PURPOSE ONLY.

1"=400'



SEE M 101-53
FOR SUBDIVISION
NW 1/4 S. 18

1.300.000

480.000

30 4 13

10/84 *BS*