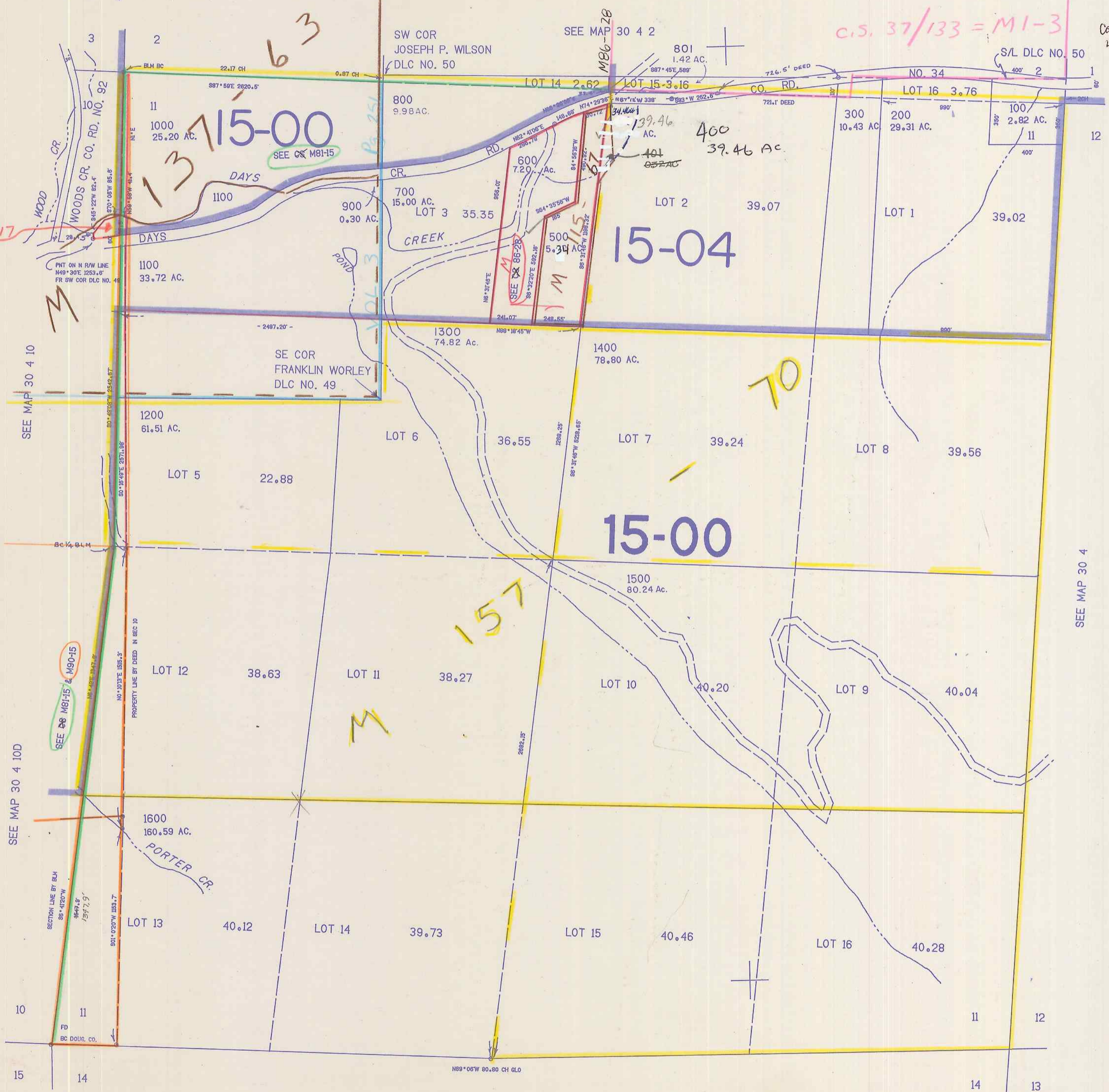


SECTION 11 T.30S. R.4W. W.M.
DOUGLAS COUNTY

30 4 11

THIS MAP WAS PREPARED FOR
ASSESSMENT PURPOSE ONLY.

1"=400'



C.S. 37/133 = M1-3

Cancelled NOs
401

C.S. 39/117

SEE MAP 30 4 10

SEE MAP 30 4 10D

SEE MAP 30 4 14

SEE MAP 30 4

MB6-2B

1,295,000

30 4 11

12/90
N.S.