

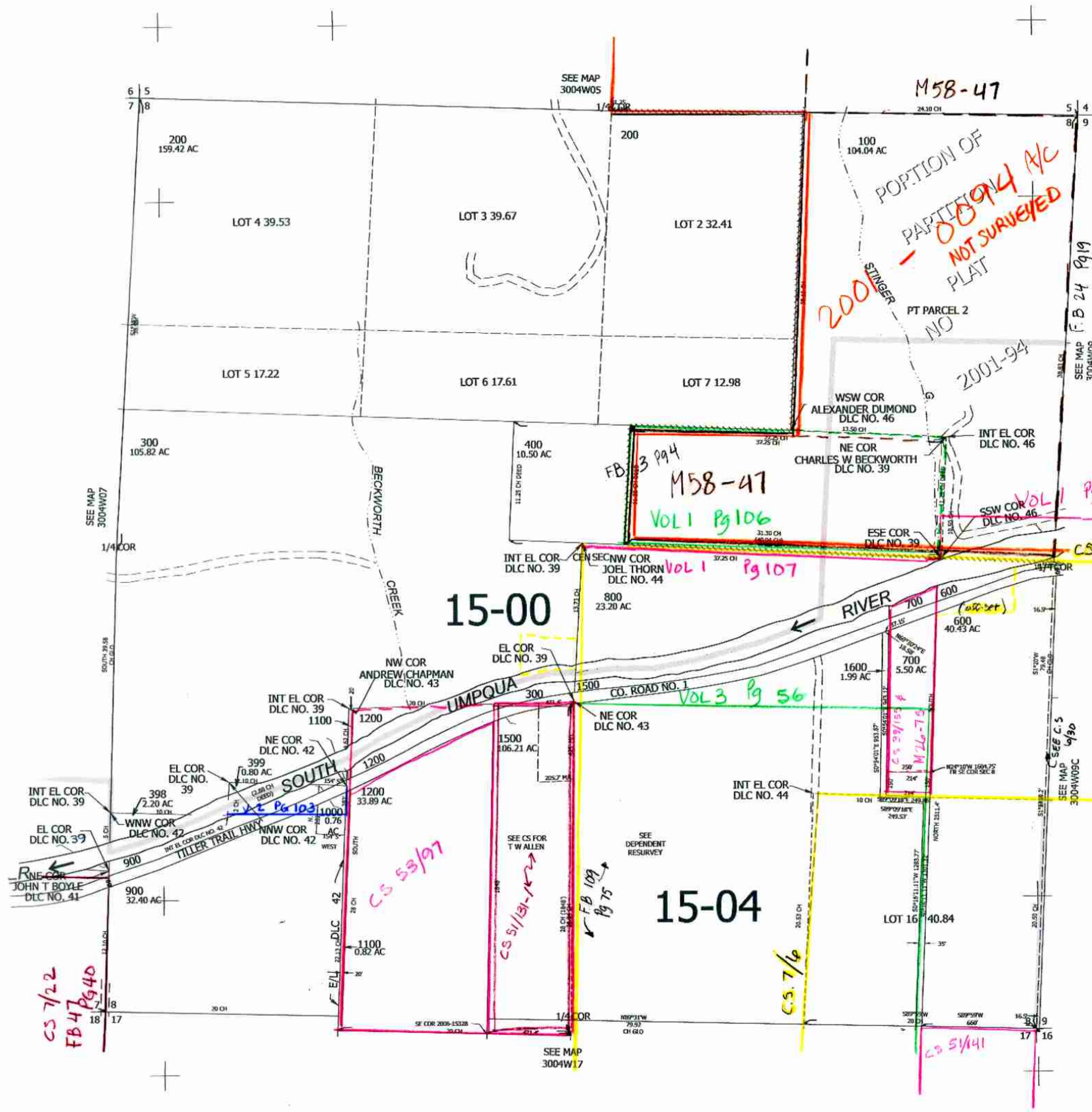
THIS MAP WAS PREPARED FOR ASSESSMENT PURPOSE ONLY.

Upper Left:
123°12'49"W 42°59'8"N
4195324E 492432N ft

SEC.08 T.30S. R.04W. W.M.
DOUGLAS COUNTY
1" = 400'

Date Exported: 2/28/2023 8:41 AM

CANCELLED NOS:
500 1300 1301
1400 1501 1601



CS 7/22
FB 47 Pg 40

CS 53/97

CS 51/31-16

FB 109 Pg 75

15-04

CS 7/6

CS 5/41

SEE CS 4/30

3/22/23
JCV

Lower Right:
123°11'2"W 42°58'1"N
4203077E 485410N ft

300408 &