

THIS MAP WAS PREPARED FOR ASSESSMENT PURPOSE ONLY.

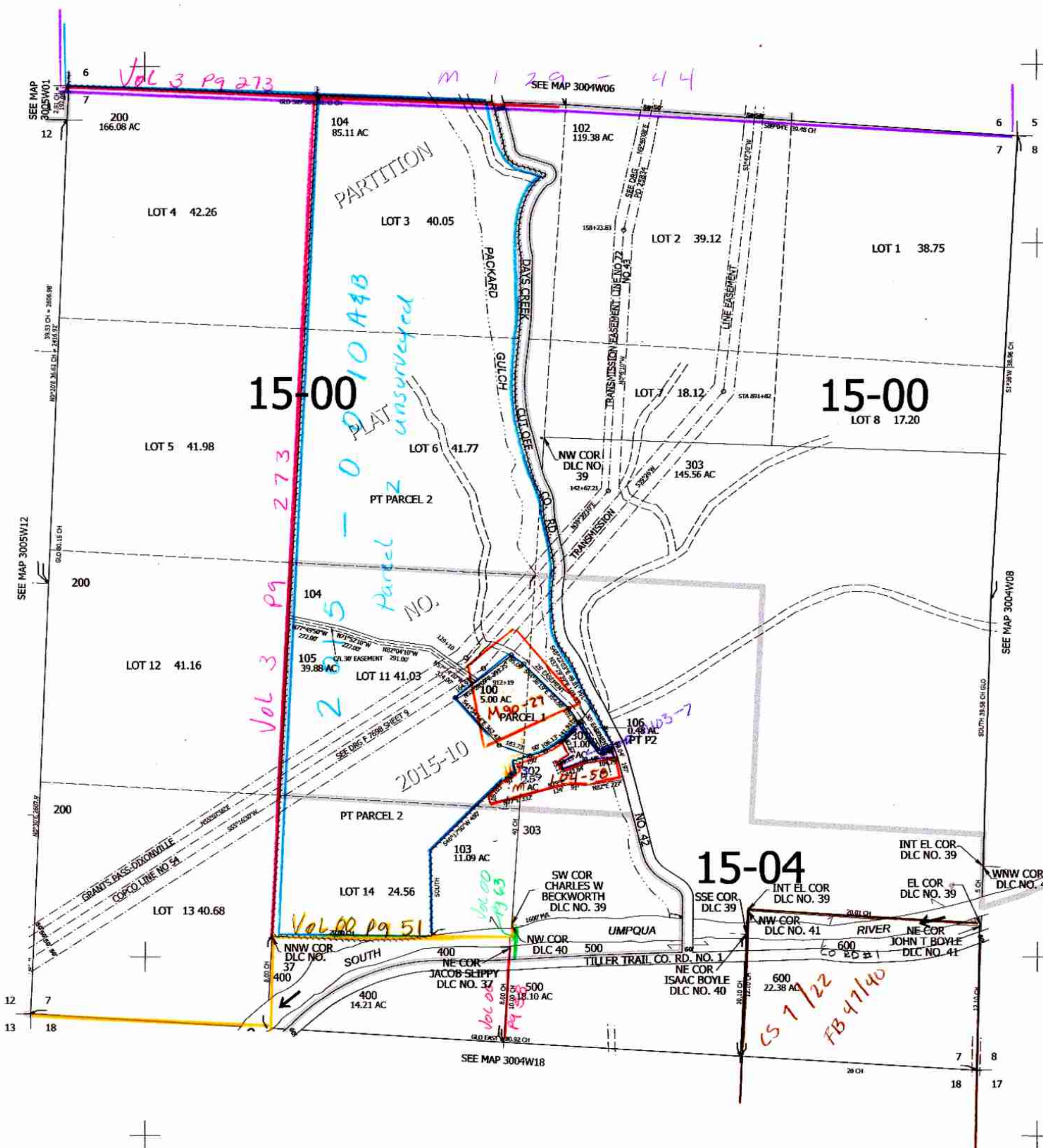
Upper Left:
123°13'57"W 42°59'8"N
4190309E 492632N ft.

SEC.07 T.30S. R.04W. W.M.
DOUGLAS COUNTY
1" = 400'

Date Exported 2024-04-16

300407

Cancelled
300 j01



CHK
7/23/15

300407

Lower Right:
123°12'8"W 42°58'2"N
4198158E 485677N ft.