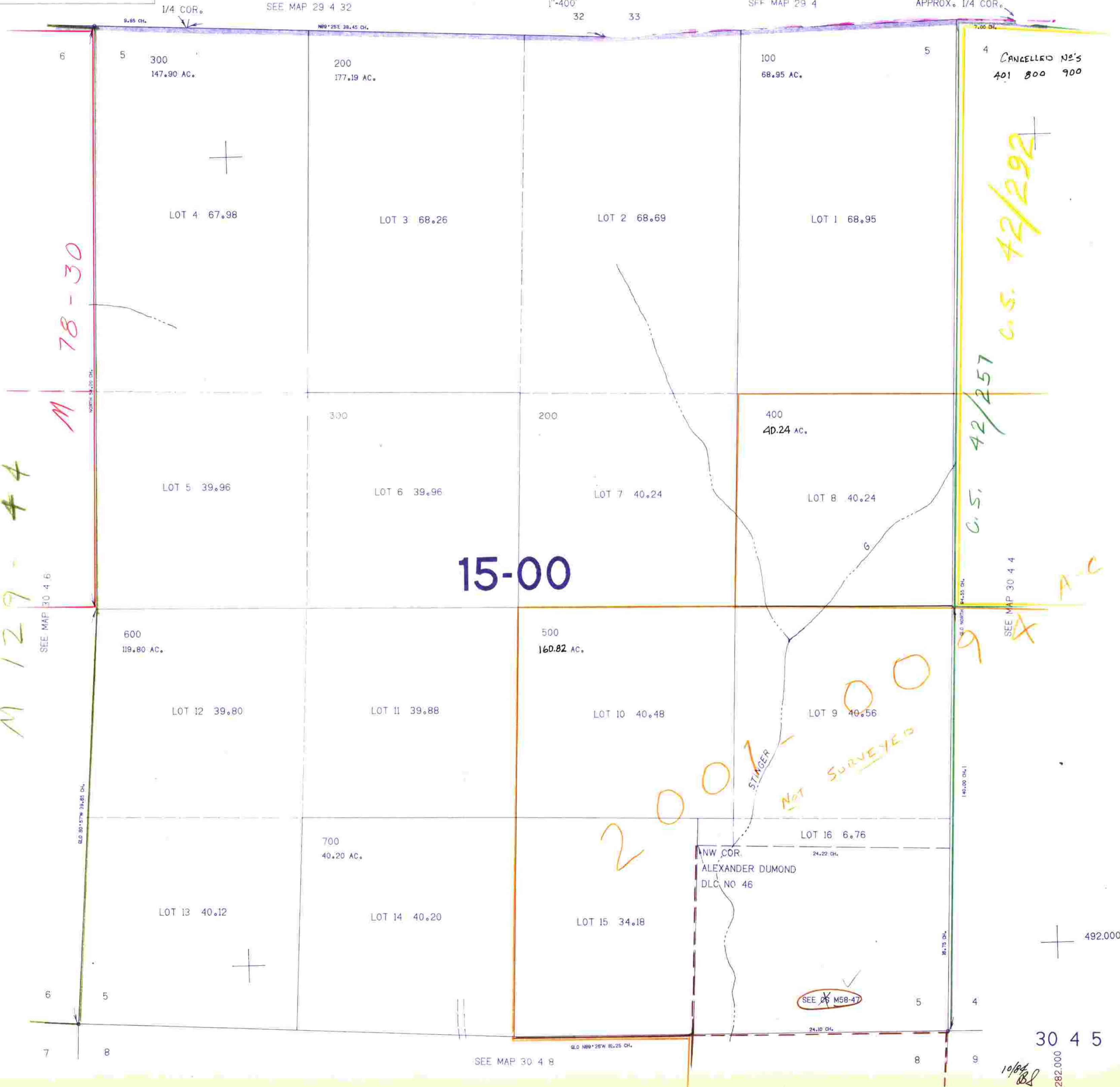


SECTION 5 T.30S. R.4W. W.M.  
DOUGLAS COUNTY

30 4 5

THIS MAP WAS PREPARED FOR  
ASSESSMENT PURPOSE ONLY



M 129-44

M 78-30

15-00

2000

NOT SURVEYED

SEE M58-47

C.S. 42/257

C.S. 42/292

CANCELLED No's  
401 800 900

SEE MAP 30 4 4

492.000

30 4 5

1282.000

10/22/82

NW COR.  
ALEXANDER DUMOND  
DLC NO 46

SEE MAP 30 4 6

SEE MAP 30 4 8

6  
7

5  
8

SEE MAP 29 4 32

1"=400'  
32 33

SEE MAP 29 4

APPROX. 1/4 COR.

9.85 CH.  
NORTH-SOUTH DIRECTION

N89°25'E 38.45 CH.

7.00 CH.

S10 30°15'W 39.85 CH.

S10 30°15'W 31.25 CH.

140.00 CH.

36.75 CH.

24.10 CH.

24.22 CH.

81.0 NORTH 24.35 CH.

SEE MAP 30 4 4

A-C

9

8

9

5

4

6

5

300

147.90 AC.

LOT 4 67.98

200

177.19 AC.

LOT 3 68.26

100

68.95 AC.

LOT 2 68.69

5

100

68.95 AC.

LOT 1 68.95

4

300

LOT 5 39.96

200

LOT 6 39.96

LOT 7 40.24

LOT 8 40.24

600

119.80 AC.

LOT 12 39.80

500

160.82 AC.

LOT 11 39.88

LOT 10 40.48

LOT 9 40.56

700

40.20 AC.

LOT 13 40.12

LOT 14 40.20

LOT 15 34.18

LOT 16 6.76

6

5

7

8

5

4

8

9