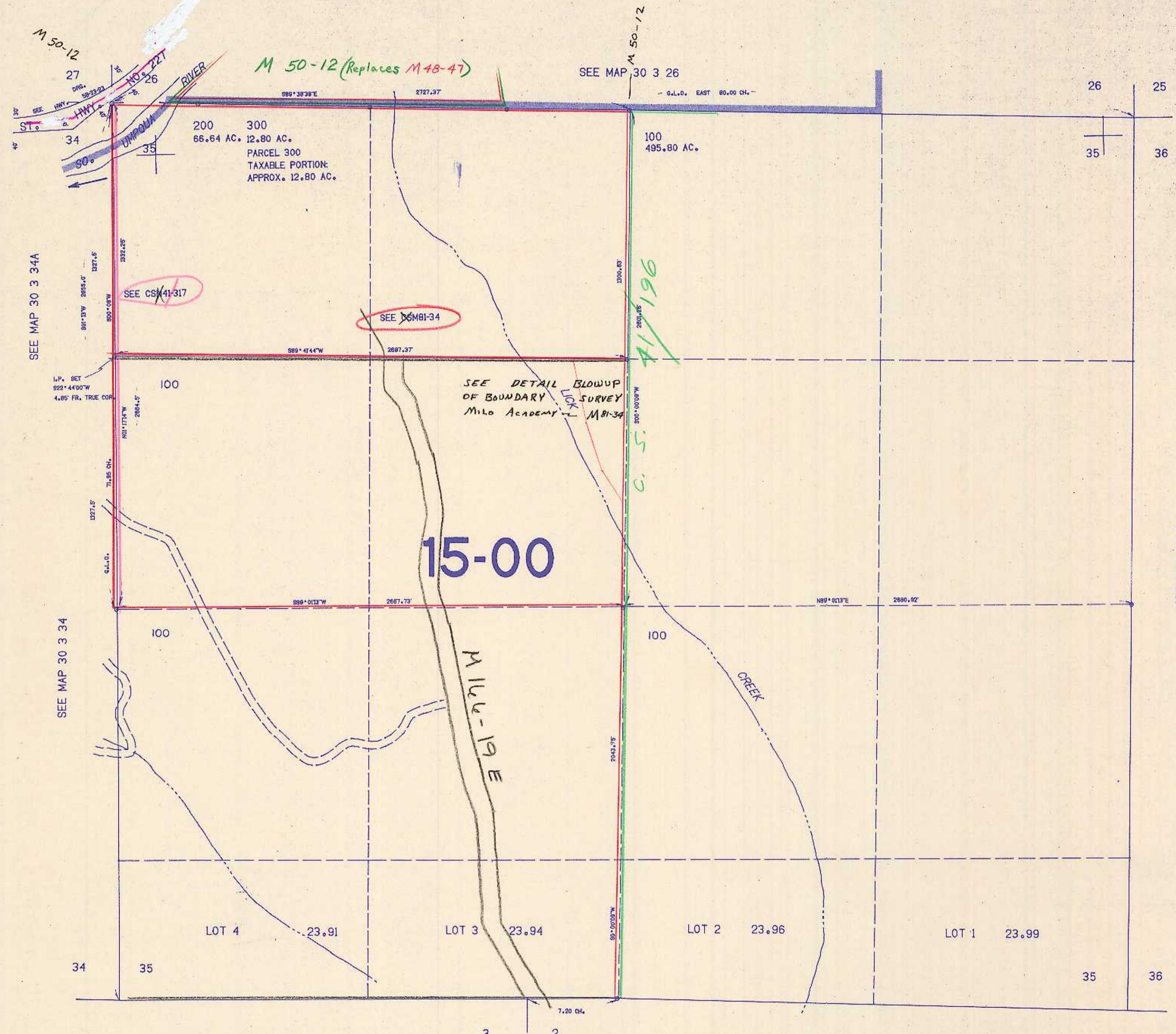


SECTION 35 T.30S. R.3W. W.M.
DOUGLAS COUNTY

30 3 35

THIS MAP WAS PREPARED FOR
ASSESSMENT PURPOSE ONLY.

1"=400'



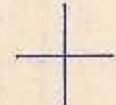
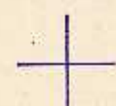
SEE MAP 30 3 34A

SEE MAP 30 3 34

SEE MAP 30 3 26

SEE MAP 30 3

SEE MAP 31 3



466.000

1.325.000

30 3 35

8/84 BS