

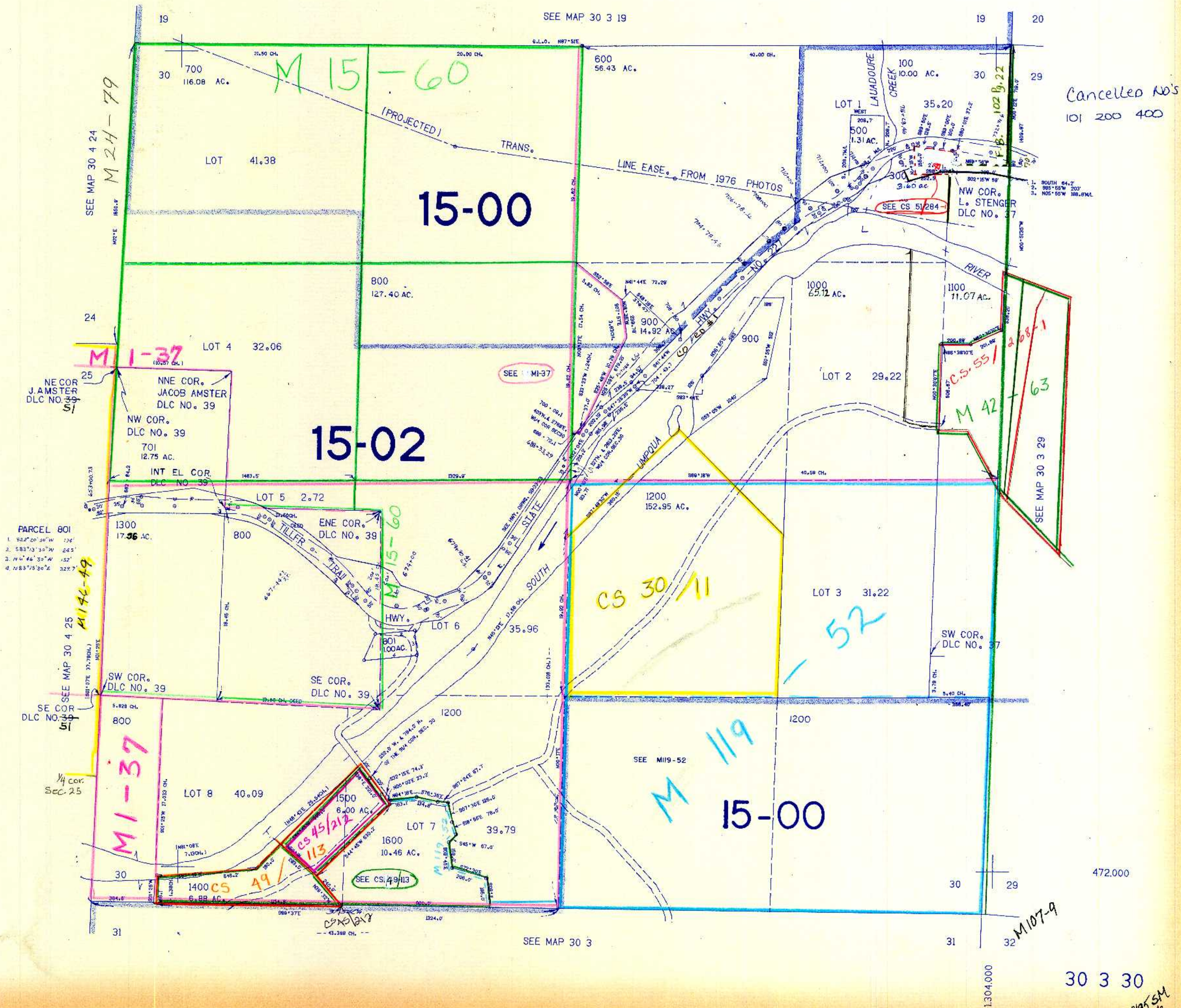
SECTION 30 T.30S. R.3W. W.M.  
DOUGLAS COUNTY

REVISED ON  
8-1-95

30 3 30

THIS MAP WAS PREPARED FOR  
ASSESSMENT PURPOSE ONLY.

1"=400'



Cancelled No's  
101 200 400

30 3 30  
8/95 SM