

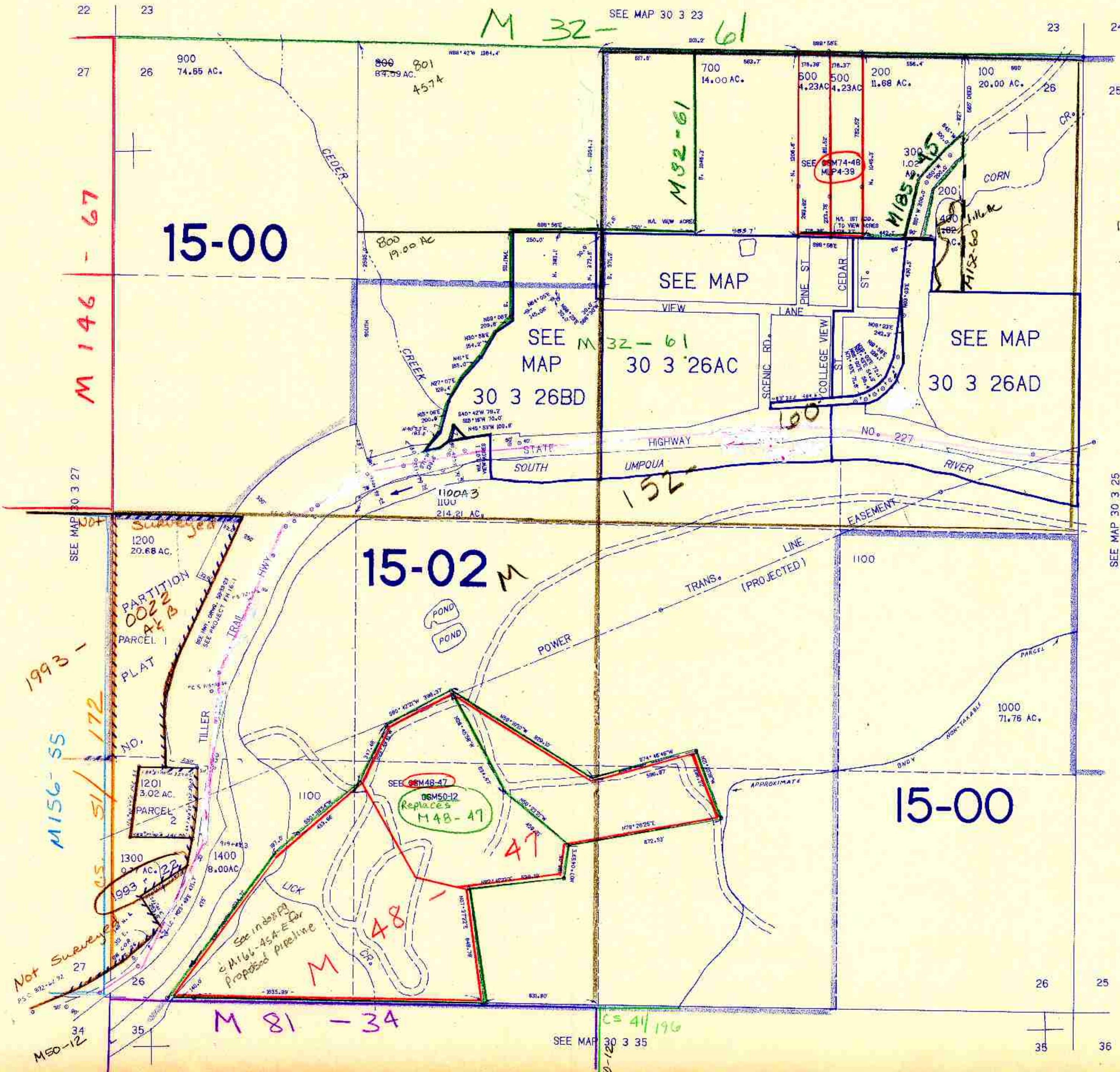
SECTION 26 T.30S. R.3W. W.M.
DOUGLAS COUNTY

REVISED ON
5-25-94

30 3 26
& INDEX

THIS MAP WAS PREPARED FOR
ASSESSMENT PURPOSE ONLY.

1"=400'



476.000
CANCELLED NO'S
701
302
303
1100A1
1100A2
301

SEE MAP 30 3 25

30 3 26
& INDEX

MW
6/94/80