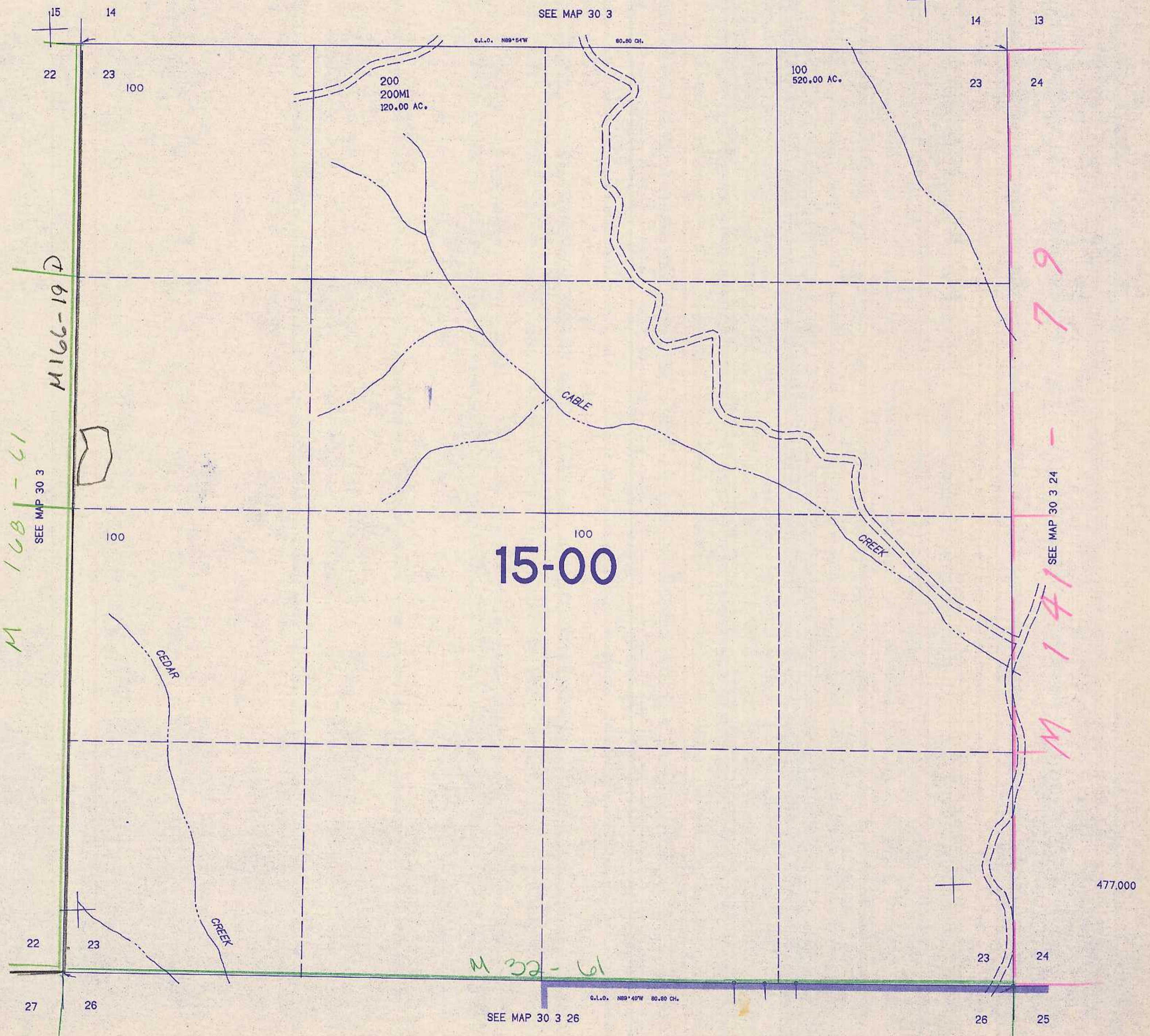


SECTION 23 T.30S. R.3W. W.M.
DOUGLAS COUNTY

30 3 23

THIS MAP WAS PREPARED FOR
ASSESSMENT PURPOSE ONLY.

1"=400'



15-00

M 166-19 D

M 168-61

79

M 141

M 32-61

30 3 23

8/84 BS